

Air Control Mounting Kit

406857C

Merkur® and Merkur® Bellows Pumps - Wall Mount

ENG

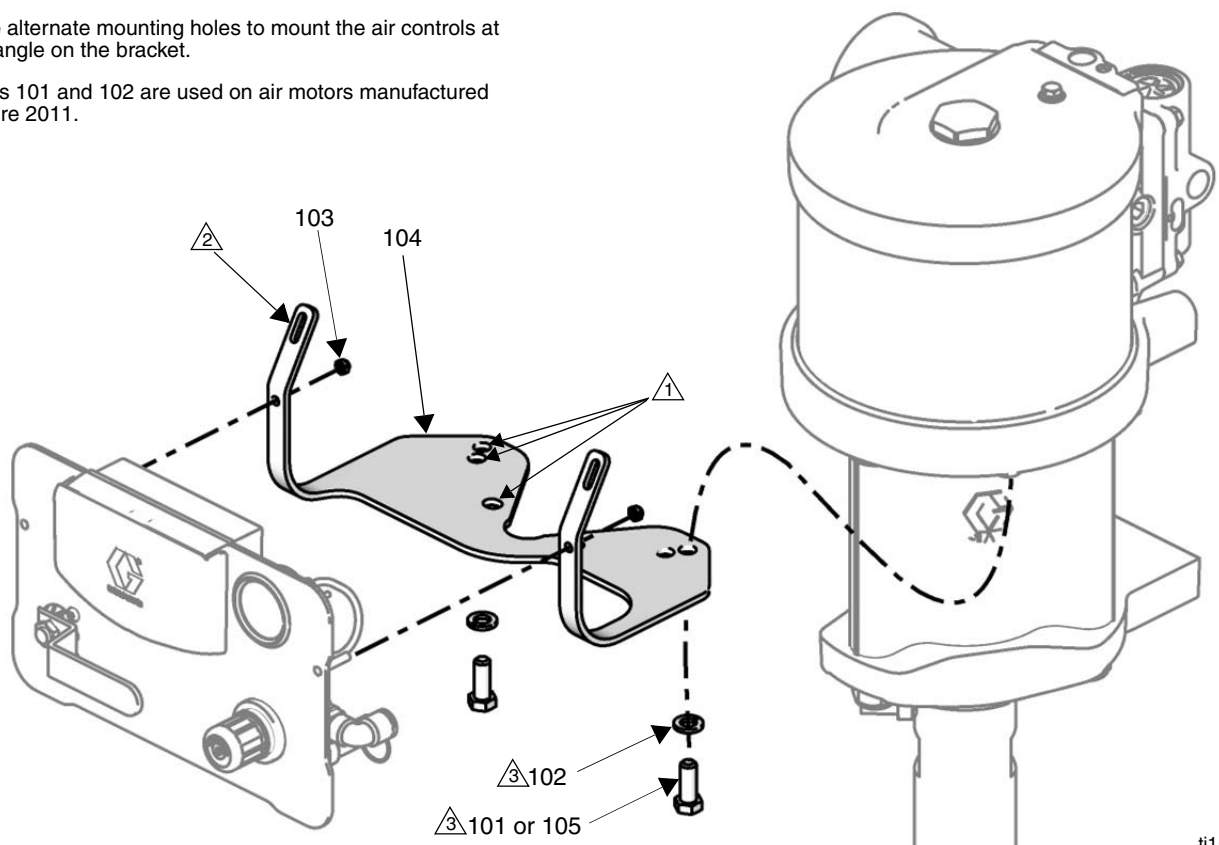
**Important Safety Instructions**

Read all warnings and instructions in your spray package manual. Save all instructions.

Kit 24E883**Ref. Description****Qty.**

101	SCREW; see note ③.	2
102	WASHER; see note ③.	2
103	NUT, lock, 5 mm	2
104	BRACKET, air controls	1
105	SCREW, M8 x 1.25	2

- ① Mounting hole location depends on motor size.
- ② Use alternate mounting holes to mount the air controls at an angle on the bracket.
- ③ Parts 101 and 102 are used on air motors manufactured before 2011.



ti15484b

Graco Inc. P.O. Box 1441 Minneapolis, MN 55440-1441

Original instructions. This manual contains English. MM 406857

Copyright 2010, Graco Inc. is registered to ISO 9001

Rev. C 12/2010