

Throat Seal Upgrade Kits

406877E
EN

To convert 2000cc, 3000cc, and 4000cc High-Flo Plus Lowers that have torqueable throat packings and an open wet-cup to spring loaded throat packings and an enclosed wet-cup. See List of Kit Part Numbers below.



Important Safety Instructions

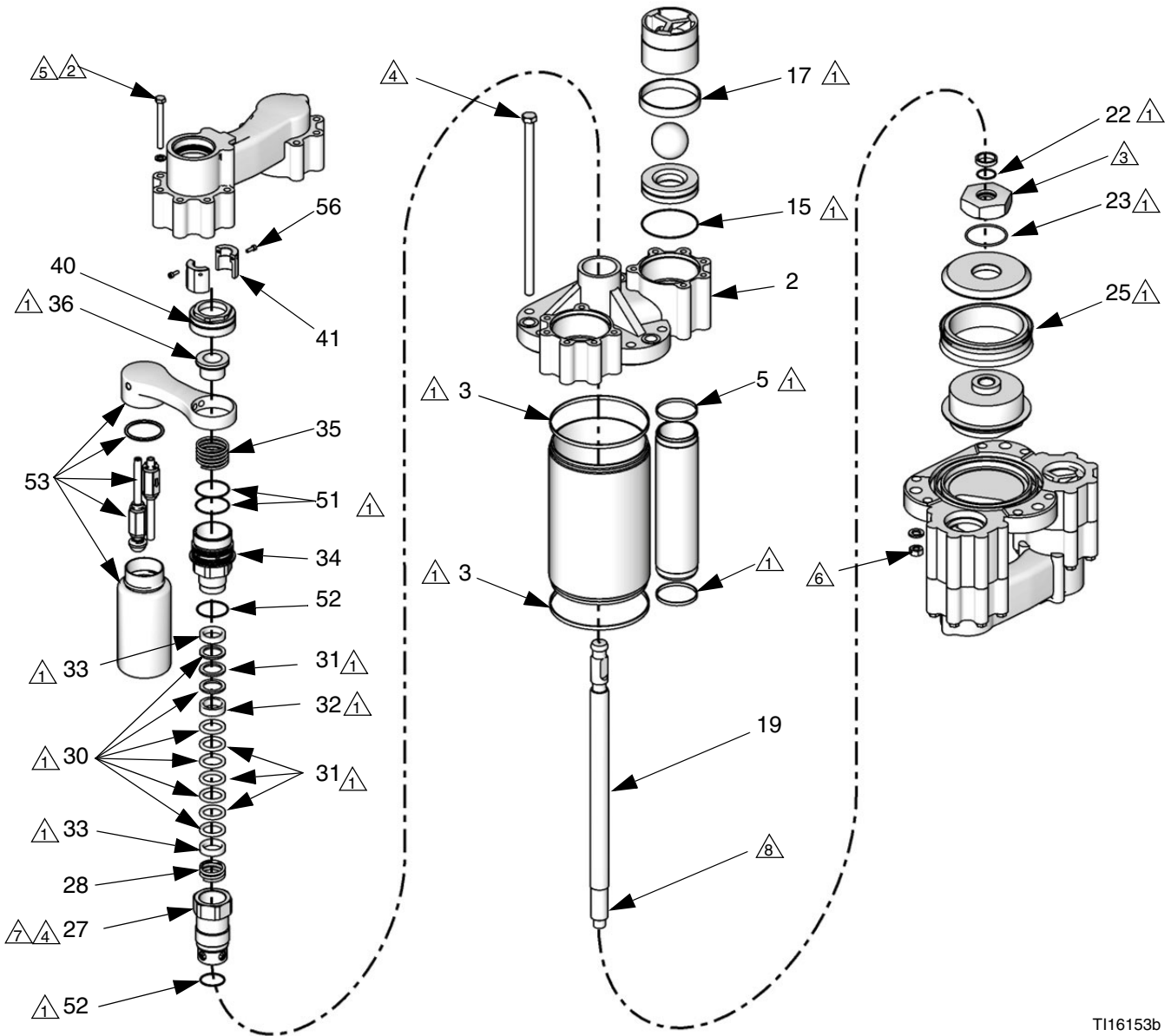
Read all warnings and instructions in this manual and in your 4-Ball pump manual 3A0540. Save all instructions.

NOTE: Use these kits to upgrade the following lowers. A Shield Kit is also required; see manual 406876 to order the correct kit for your pump.

Kit Part No.	Lower
24H350 (SST)	243734 (2000cc)
	243771 (2000cc)
	248329 (2000cc)
	248332 (2000cc)
24F285 (SST)	243735 (3000cc)
	243772 (3000cc)
	248330 (3000cc)
	248333 (3000cc)
	240591 (3000cc)
	240592 (3000cc)
24H354 (SST)	243736 (4000cc)
	243773 (4000cc)
	248331 (4000cc)
	248334 (4000cc)
24H351 (CST)	243731 (2000cc)
24F286 (CST)	243732 (3000cc)
24H355 (CST)	243733 (4000cc)

NOTE: See page 2 for drawing of pump assembly showing kit parts and location.

Ref.	Description	Qty
2	HOUSING, outlet	1
3	GASKET, cylinder	2
5	O-RING	4
15	O-RING; ptfе	2
17	SEAL, seat; UHMWPE	2
19	ROD, piston	1
22	O-RING; ptfе	1
23	O-RING; ptfе	1
25	PACKING, piston; UHMWPE	1
27	CARTRIDGE, packing, throat	1
28	SPRING	1
30	V-PACKING; UHMWPE	6
31	V-PACKING; leather	4
32	GLAND, female	1
33	GLAND, male	2
34	WET-CUP	1
35	SPRING	1
36	PISTON, TSL pump	1
39	SPACER (optional; to convert to open wet-cup if desired)	1
40	COVER, wet-cup	1
41	COLLAR, shaft	2
51	O-RING	2
52	O-RING; ptfе	2
53	ASSEMBLY, manifold and bottle	1
56	SCREW; M4 x 12	2



TI16153b

① Apply lubricant to all packings.

② Apply removable (blue) Loctite® 243 to entire length of threads. Sealant must be allowed to cure for a minimum of 12 hours before use.

③ Torque to 200-210 ft-lb (270-285 N•m).

④ Apply thread lubricant.

⑤ Torque to 18-20 ft-lb (24-27 N•m).

⑥ Tighten uniformly until cylinder is seated then torque to 60-65 ft-lb (81-88 N•m).

⑦ Torque 95-100 ft-lb (129-135 N•m).

⑧ Apply high strength (red) Loctite® 263 or 2760 to entire length of threads. Sealant must be allowed to cure for a minimum of 12 hours before use.

All written and visual data contained in this document reflects the latest product information available at the time of publication. Graco reserves the right to make changes at any time without notice.

Original instructions. This manual contains English. MM 406877

Graco Headquarters: Minneapolis
International Offices: Belgium, China, Japan, Korea

GRACO INC. AND SUBSIDIARIES • P.O. BOX 1441 • MINNEAPOLIS, MN 55440-1441 • USA

Copyright 2010, Graco Inc. All Graco manufacturing locations are registered to ISO 9001.

www.graco.com
 Revised June 2013