

InvisiPac™ Tank-Free™

Pressure Gauge Replacement Kit

407071D

EN

To replace the air gauge glass lenses and internal fuses on InvisiPac systems used in food or beverage industries, for compliance with BRC Global Standard for Food Safety. For professional use only.

Not approved for use in explosive atmospheres or hazardous locations.

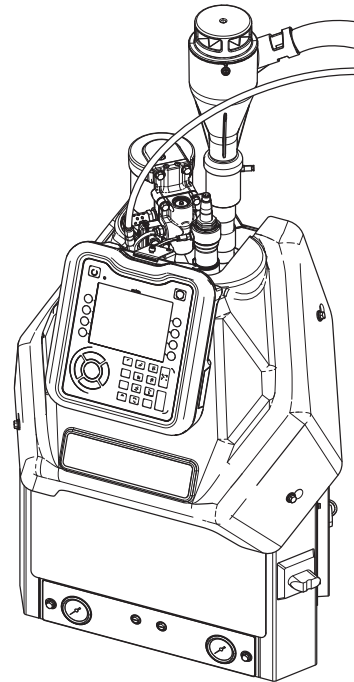


Important Safety Instructions

Read all warnings and instructions in InvisiPac system manual 3A2347 and 333347. Save all instructions.

Kit No. 24U635

Ref.	Description	Qty
		.
1	GAUGE, pressure, acrylic	2
2	TOOL, puller, fuse	1
3	FUSE, 250V, 8A	32



Required Tools

- 7 mm wrench
- 10 mm wrench
- 11 mm wrench
- 14 mm wrench
- 16 mm wrench
- Flat head screwdriver
- Pipe thread sealant

Optional: Use fuse puller tool (2) to replace glass fuses in system.

Remove Glass Lens Pressure Gauges

1. Turn main power switch OFF.
2. Close the bleed-type ball valve installed at the system air inlet to relieve all system air pressure.
3. Use 10 mm wrench to remove screws and pull air control panel (K) away from the electrical enclosure. See FIG. 1.
4. Disconnect air hose (L) from NPT inlet fitting (A).
5. Use 14 mm wrench to remove fitting (A) and a 7 mm wrench to remove bracket nuts (B). Pull bracket (C) off backside of pressure gauge (D).

NOTE: Set fitting (A) aside and use with new pressure gauge.

Install Pressure Gauge Kit 24U635

1. Place new gauge on front and align screws with the bottom of the machine to ensure proper view of gauge.
2. Place bracket (H) on back of gauge (E) and tighten nut (F) with 16 mm wrench. See FIG. 1.
3. Check orientation of gauge (E). Use a 16 mm wrench to tighten nut (F), while using a 11 mm wrench on flats of gauge (E) to secure position.
4. Use flathead screwdriver to tighten screws (G) on bracket assembly (H), if necessary.
5. Apply thread sealant to NPT threads on gauge (E) and tighten air fitting (A) with a 14 mm wrench.
6. Reconnect air hoses (L) to NPT inlet fitting (A).
7. Slide air control panel (K) into place and use a 10 mm wrench to secure screws.

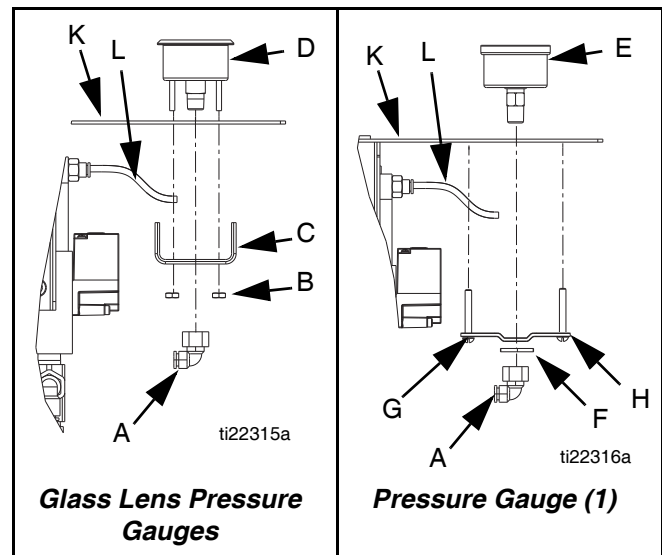




FIG. 1: Pressure Gauges

Replace MZLP Fuses

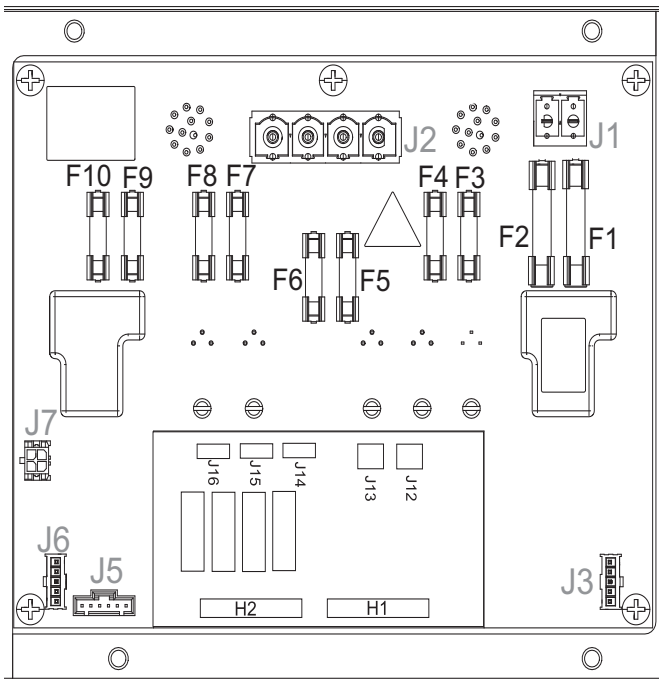
						
<p>To prevent electric shock, turn off and disconnect power at main switch before disconnecting any cables and before servicing or installing equipment.</p>						

NOTICE
<p>To prevent system damage, always use fast acting fuses. Fast acting fuses are required for short-circuit protection.</p>

1. Turn main power switch OFF.
2. Remove electrical enclosure front access door.
3. Use the non-conductive tool provided, item 3, to remove the blown fuse.

NOTICE
<p>Using an improper tool, such as a screw driver or pliers may break glass on fuse.</p>

4. Use the non-conductive tool provided, item 3, to install the new fuse.
5. Install electrical enclosure front access door.



ti23434

FIG. 2: MZLP ID and Fuse Locations

Graco Information

Sealant and Adhesive Dispensing Equipment

For the latest information about Graco products, visit www.graco.com.

For patent information, see www.graco.com/patents.

TO PLACE AN ORDER, contact your Graco distributor, go to www.graco.com and select “Where to Buy” in the top blue bar, or call to find the nearest distributor.

If calling from the US: 800-746-1334

If calling from outside the US: 0-1-330-966-3000

*All written and visual data contained in this document reflects the latest product information available at the time of publication.
Graco reserves the right to make changes at any time without notice.*

Original instructions. This manual contains English. MM 407071

Graco Headquarters: Minneapolis

International Offices: Belgium, China, Japan, Korea

GRACO INC. AND SUBSIDIARIES • P.O. BOX 1441 • MINNEAPOLIS MN 55440-1441 • USA

Copyright 2013, Graco Inc. All Graco manufacturing locations are registered to ISO 9001.

www.graco.com

Revision D, January 2017