

# Diaphragm Install Tool

407101A

EN

*For installing the diaphragms on Husky<sup>®</sup> pumps with non-modular air valve.  
For professional use only.*



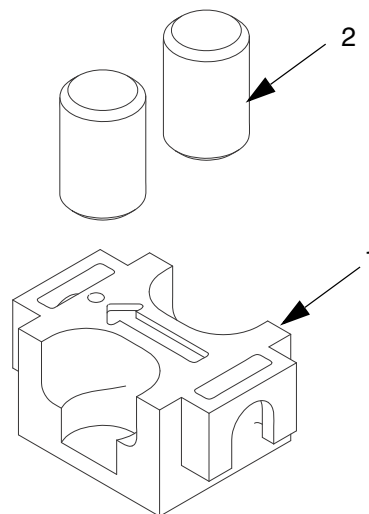
## Important Safety Instructions

Read all warnings and instructions in your pump manual. Save all instructions.

## Kit 24V543

Ref.	Description	Qty.
1	TOOL, diaphragm install	1
2	TRAVEL RESTRICTOR	2

See reverse for instructions.



1. Follow the instructions in your pump manual to install the diaphragms.
2. Install the fluid cover on one side.

**SaniForce pumps:** Lubricate the clamp with water-proof sanitary lubricant. See Torque Instructions in your pump manual.

**Industrial Husky pumps:** Torque all bolts according to instructions in your pump manual.

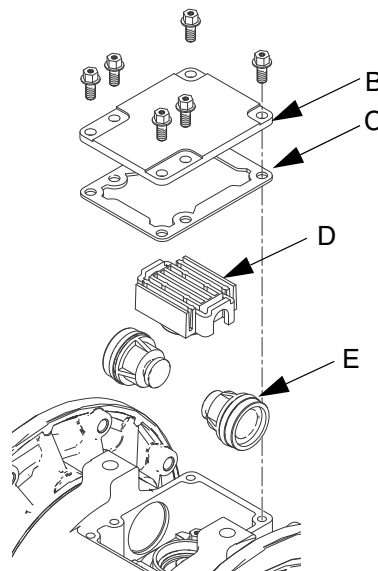
3. Remove the air valve cover (B) and gasket (C).
4. Remove the valve carriage (D) and both pistons (E).
5. Install a travel restrictor (2) in each piston, then put the pistons (E) back in the center section.
6. Place the supplied tool (1) where the valve carriage (D) normally goes, flat side down. The arrow (A) must face toward the fluid cover that is already attached.
7. Reattach the air valve cover (B) and gasket (C).
8. Supply the pump with low pressure air, just enough to move the diaphragm. Use about 10 to 20 psi (0.07 to 0.14 MPa, 0.7 - 1.4 bar). Shop air may be used. The diaphragm will shift so the second fluid cover will seat properly. Keep air pressure on.
9. Install the second fluid cover.

**SaniForce pumps:** Lubricate the clamp with water-proof sanitary lubricant. See Torque Instructions in your pump manual.

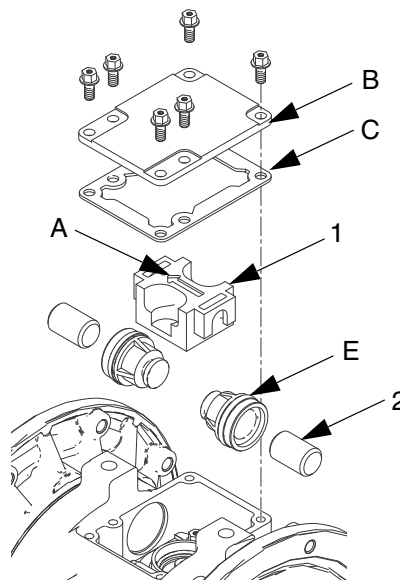
**Industrial Husky pumps:** Torque all bolts according to instructions in your pump manual.

10. Remove air supply from pump.
11. Remove the air valve cover (B), gasket (C) and the tool (1).
12. Remove the pistons (E) and the travel restrictors (2).

13. Lubricate and install the pistons (E).
14. Lubricate and install the valve carriage (D).
15. Reattach the gasket (C) and air valve cover (B). See torque instructions in your pump manual.



**FIG. 1. Remove valve carriage and pistons.**



**FIG. 2. Place install tool and travel restrictors.**

*All written and visual data contained in this document reflects the latest product information available at the time of publication. Graco reserves the right to make changes at any time without notice.*

Original instructions. This manual contains English. MM 407101

**Graco Headquarters:** Minneapolis  
**International Offices:** Belgium, China, Japan, Korea

**GRACO INC. AND SUBSIDIARIES • P.O. BOX 1441 • MINNEAPOLIS MN 55440-1441 • USA**

**Copyright 2014, Graco Inc. All Graco manufacturing locations are registered to ISO 9001.**

[www.graco.com](http://www.graco.com)