

Leak Sensor Kit 24Y849

407150D

EN

SoloTech™ Peristaltic Pumps



Important Safety Instructions

Read all warnings and instructions in the SoloTech™ Peristaltic Pump Operation and Repair/Parts manuals. Save all instructions.



WARNING

FIRE AND EXPLOSION HAZARD

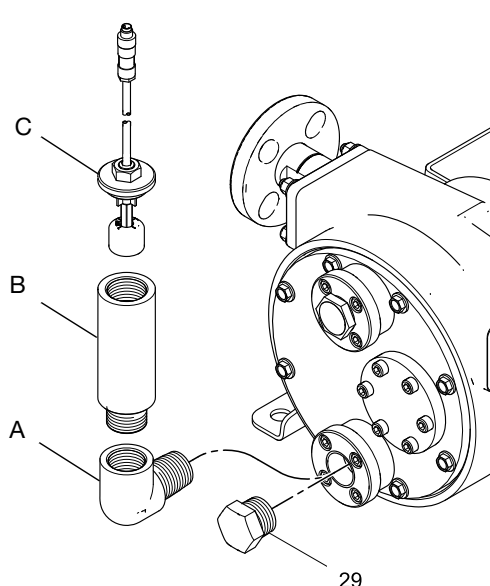
To reduce the risk of fire or explosion that can result from static sparking or chemical incompatibility:

- All pumps ship with glycerin hose lubricant. Verify hose lubricant is compatible with your pumped fluid. Do not use glycerin hose lubricant if pumping strong oxidizers or acids.
- Keep the pump properly filled with hose lubricant.

Ref.	Description	Qty.
A	ELBOW, 3/4 npt	1
B	HOUSING	1
C	LEAK SENSOR	1

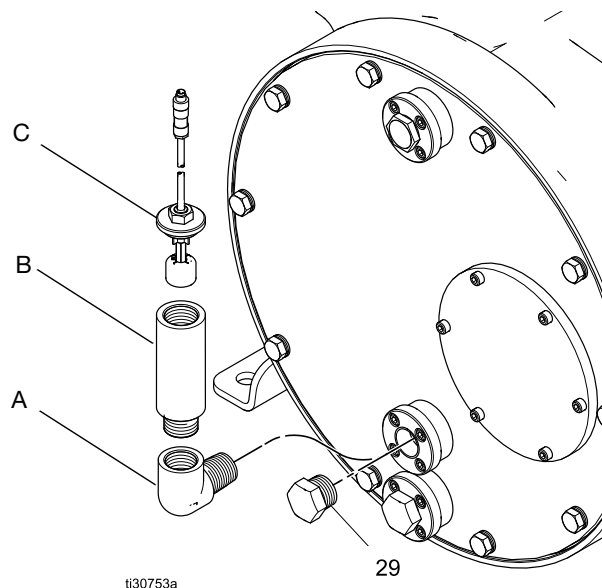
Reference numbers match the Repair and Parts manual.

1. Remove the plug (29).
2. Install the elbow (A).
3. Screw the housing (B) into the elbow.
4. Screw the leak sensor (C) into the housing.



ti27461a

i6, i/h10, i/h16, i23, h25



ti30753a

i/h26, i30, i/h32

GRACO INC. AND SUBSIDIARIES • P.O. BOX 1441 • MINNEAPOLIS MN 55440-1441 • USA

Copyright 2015, Graco Inc. All Graco manufacturing locations are registered to ISO 9001.

407150, Revision D, May 2022

PROVEN QUALITY. LEADING TECHNOLOGY.