

Dump Valve

X004484A

EN

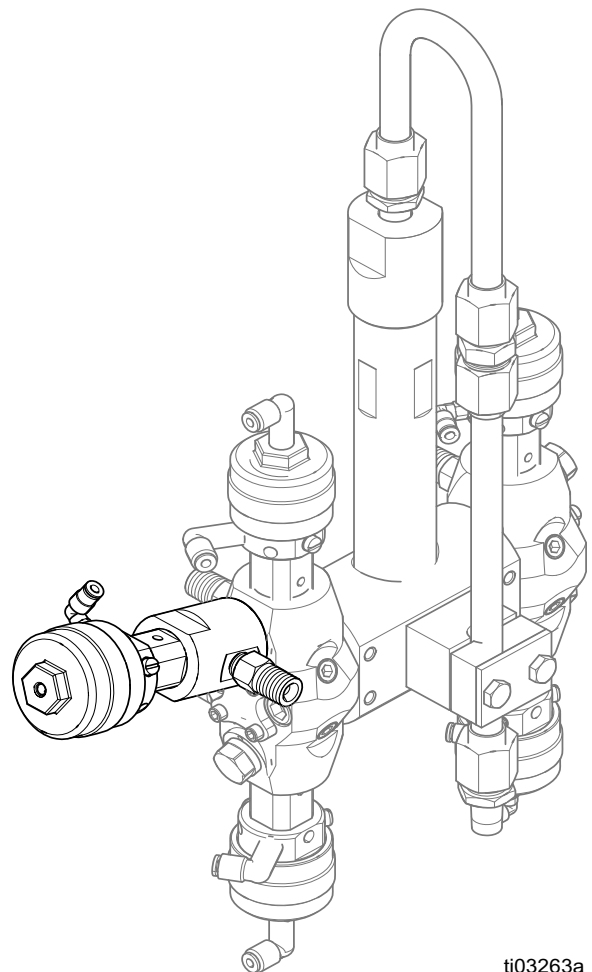
Used in certain applications to discharge paint or catalyst during a recipe change while the line and gun are purging. Not compatible with acid-based materials. For use with the ProMix® V Package Meter Proportioner. For professional use only.

2011578



Important Safety Instructions

Read all warnings and instructions in this manual and in any related manuals before using the equipment. Be familiar with the proper control and usage of the equipment. Save these instructions.



ti03263a

Contents

Contents **2**
Related Manuals..... **2**
Installation..... **3**
Parts **5**
Graco Standard Warranty **6**

Related Manuals

Find English manuals and any available translations at www.graco.com.







English Manual Number	Description
3B0203	ProMix V Package Meter Proportioner Instructions
3B0361	ProMix V Package Meter Proportioner Repair-Parts
X005029	Solenoids Accessory

Installation

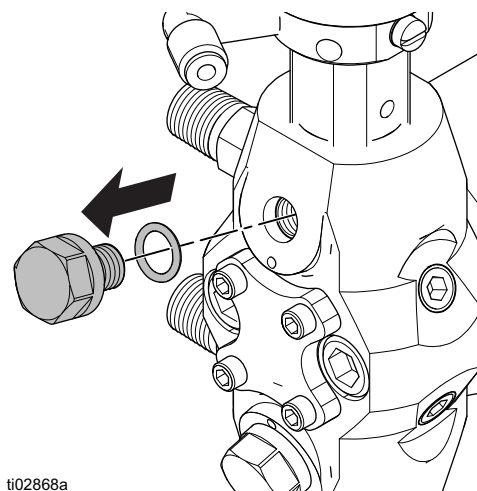
The dump valve kit allows the ProMix V Package Meter Proportioner to dump paint or catalyst during a recipe change while the line and gun are purging.

NOTE: See the ProMix V Package Meter Proportioner Instructions manual for purging instructions.

NOTE: The dump valve can only be installed in the top side of the mix manifold. Never install the dump valve on the bottom side.

 WARNING				
				
PRESSURIZED FLUID HAZARD This equipment stays pressurized until pressure is manually relieved. To help prevent serious injury from pressurized fluid, such as skin injection, splashing fluid and moving parts, follow the Pressure Relief Procedure when you stop pumping and before cleaning, checking or servicing the equipment.				
PERSONAL PROTECTIVE EQUIPMENT Wear appropriate protective equipment when in the work area to help prevent serious injury, including eye injury, hearing loss, inhalation of toxic fumes, and burns.				

1. Perform the Pressure Relief procedure in the ProMix V Package Meter Proportioner Instructions manual. See **Related Manuals**, page 2.
 2. Perform the Shutdown procedure in the ProMix V Package Meter Proportioner Instructions manual. See **Related Manuals**, page 2.
 3. Coat all o-rings (103, 105, 107, and 109) with a thin layer of grease or oil.
 4. Tighten the fluid manifold fitting (108) and ptfe o-ring (109) into the mix manifold sampling valve fitting (102).
 5. Loosen the dispense valve cap on the dispense valve (106) until a gap under the dispense valve cap is just visible. This relieves the spring pressure, which prevents the nose of the valve from twisting against the valve seat when the dispense valve (106) is screwed into place.
 6. Remove the top plug and o-ring on the mix manifold. See FIG. 1.
 7. Install the dowel pin (101) into the mix manifold, as shown in FIG. 4.
 8. Install the assembled mix manifold sampling valve fitting (102), with o-ring (103) and fluid manifold fitting (108), over the dowel pin (101).
- NOTE:** The dowel pin (101) is for location only, and cannot withstand high torque. Support the mix manifold sampling valve fitting (102) with a wrench while tightening.
9. Using a 10 mm hex key, install the manifold bolt (104) with o-ring (105) into the mix manifold sampling valve fitting (102).
 10. Install the ptfе o-ring (107) onto the dispense valve (106)
 11. Screw the dispense valve (106) into the mix manifold sampling valve fitting (102), and tighten using the flats of the dispense valve and mix manifold sampling valve fitting.
 12. Screw in the dispense valve cap until it bottoms out (about 8 in/lbf). Mark the cap and dispense valve location for the next step, then loosen the cap two turns.



ti02868a

FIG. 1: Dump Valve A

13. Plumb a 5/32 hose from the dispense valve (near the middle of the valve, not the end) to a new solenoid. See the solenoid kit manual. See **Related Manuals**, page 2.
14. See the ProMix V Package Meter Proportioner Instructions manual to allocate the I/O. See **Related Manuals**, page 2.
15. To enable the dump valve:
 - a. Navigate to the main screen using a tablet or computer, then log in.
 - b. On the Home screen, make sure the power is OFF. The power icon in the Control panel should be OFF as shown in FIG. 2.

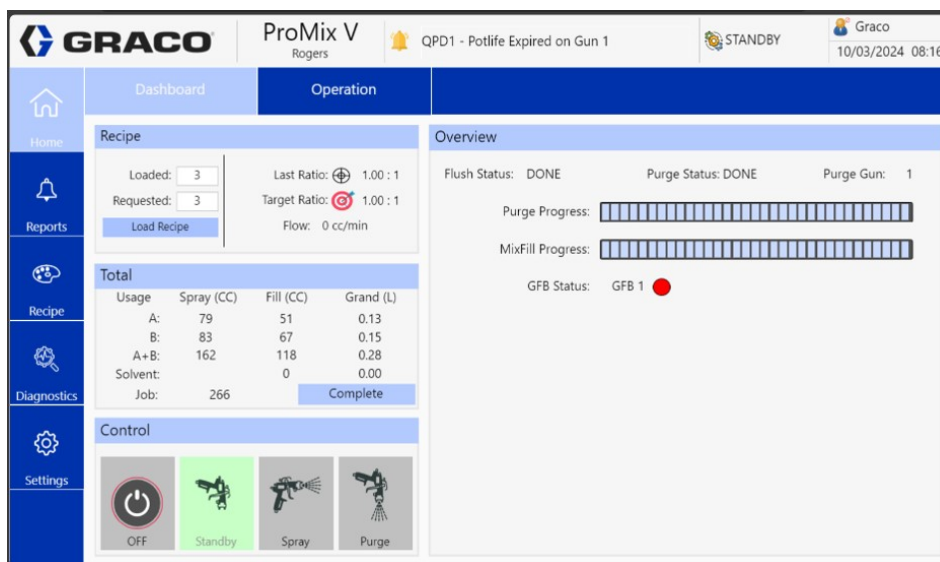


FIG. 2

- c. Navigate to the Settings tab, then navigate to the Hardware tab. Check any new hardware to enable. See FIG. 3.

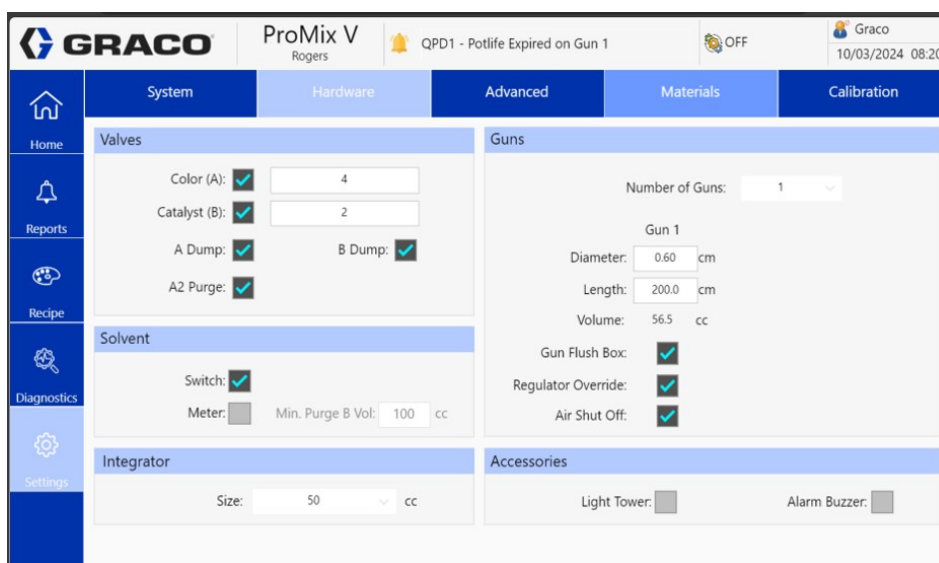


FIG. 3

NOTE: Each recipe must be changed if using the dump valve.

Parts

2011578

- 1 Valve position for color A side water chop.
- 2 Line to waste material.
- 3 Air line to solenoid.

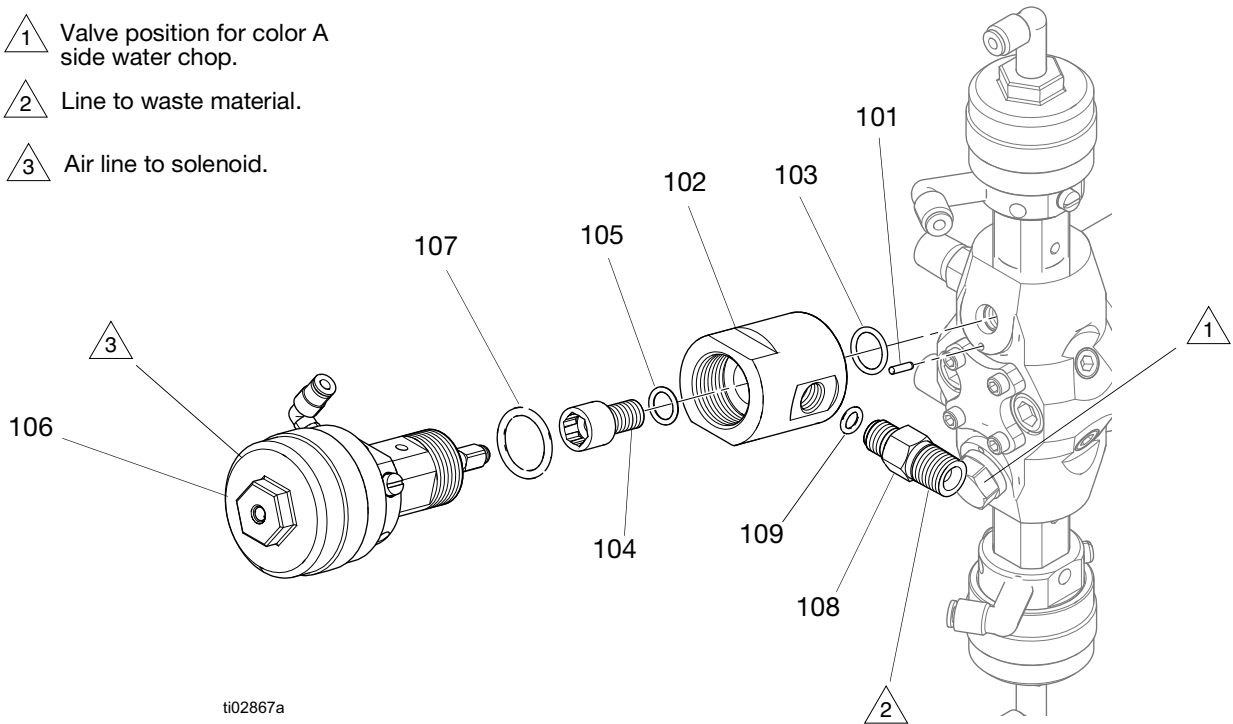


FIG. 4

Ref.	Part	Description	Qty
101	---	PIN, dowel	1
102	---	FITTING, valve, sample, mix manifold	1
103	---	PACKING, o-ring	1
104	---	BOLT, manifold	1
105	---	PACKING, o-ring	1
106	25U791	VALVE, dispense, 4k	1
107	---	PACKING, o-ring #2-116 PTFE	1
108	---	FITTING, fluid, manifold	1
109	---	PACKING, o-ring	1

California Proposition 65

CALIFORNIA RESIDENTS

⚠ WARNING: Cancer and reproductive harm – www.P65warnings.ca.gov.

Graco Standard Warranty

Graco warrants all equipment referenced in this document which is manufactured by Graco and bearing its name to be free from defects in material and workmanship on the date of sale to the original purchaser for use. With the exception of any special, extended, or limited warranty published by Graco, Graco will, for a period of twelve months from the date of sale, repair or replace any part of the equipment determined by Graco to be defective. This warranty applies only when the equipment is installed, operated and maintained in accordance with Graco's written recommendations.

This warranty does not cover, and Graco shall not be liable for general wear and tear, or any malfunction, damage or wear caused by faulty installation, misapplication, abrasion, corrosion, inadequate or improper maintenance, negligence, accident, tampering, or substitution of non-Graco component parts. Nor shall Graco be liable for malfunction, damage or wear caused by the incompatibility of Graco equipment with structures, accessories, equipment or materials not supplied by Graco, or the improper design, manufacture, installation, operation or maintenance of structures, accessories, equipment or materials not supplied by Graco.

This warranty is conditioned upon the prepaid return of the equipment claimed to be defective to an authorized Graco distributor for verification of the claimed defect. If the claimed defect is verified, Graco will repair or replace free of charge any defective parts. The equipment will be returned to the original purchaser transportation prepaid. If inspection of the equipment does not disclose any defect in material or workmanship, repairs will be made at a reasonable charge, which charges may include the costs of parts, labor, and transportation.

THIS WARRANTY IS EXCLUSIVE, AND IS IN LIEU OF ANY OTHER WARRANTIES, EXPRESS OR IMPLIED, INCLUDING BUT NOT LIMITED TO WARRANTY OF MERCHANTABILITY OR WARRANTY OF FITNESS FOR A PARTICULAR PURPOSE.

Graco's sole obligation and buyer's sole remedy for any breach of warranty shall be as set forth above. The buyer agrees that no other remedy (including, but not limited to, incidental or consequential damages for lost profits, lost sales, injury to person or property, or any other incidental or consequential loss) shall be available. Any action for breach of warranty must be brought within two (2) years of the date of sale.

GRACO MAKES NO WARRANTY, AND DISCLAIMS ALL IMPLIED WARRANTIES OF MERCHANTABILITY AND FITNESS FOR A PARTICULAR PURPOSE, IN CONNECTION WITH ACCESSORIES, EQUIPMENT, MATERIALS OR COMPONENTS SOLD BUT NOT MANUFACTURED BY GRACO. These items sold, but not manufactured by Graco (such as electric motors, switches, hose, etc.), are subject to the warranty, if any, of their manufacturer. Graco will provide purchaser with reasonable assistance in making any claim for breach of these warranties.

In no event will Graco be liable for indirect, incidental, special or consequential damages resulting from Graco supplying equipment hereunder, or the furnishing, performance, or use of any products or other goods sold hereto, whether due to a breach of contract, breach of warranty, the negligence of Graco, or otherwise.

FOR GRACO CANADA CUSTOMERS

The Parties acknowledge that they have required that the present document, as well as all documents, notices and legal proceedings entered into, given or instituted pursuant hereto or relating directly or indirectly hereto, be drawn up in English. Les parties reconnaissent avoir convenu que la rédaction du présente document sera en Anglais, ainsi que tous documents, avis et procédures judiciaires exécutés, donnés ou intentés, à la suite de ou en rapport, directement ou indirectement, avec les procédures concernées.

Graco Information

For the latest information about Graco products, visit www.graco.com.

For patent information, see www.graco.com/patents.

TO PLACE AN ORDER, contact your Graco distributor or call to identify the nearest distributor.

Toll Free Phone Number: 1-800-328-0211

*All written and visual data contained in this document reflects the latest product information available at the time of publication.
Graco reserves the right to make changes at any time without notice.*

Original instructions. This manual contains English. MM X004484

Graco Headquarters: Minneapolis

International Offices: Belgium, China, Japan, Korea

GRACO INC. AND SUBSIDIARIES • P.O. BOX 1441 • MINNEAPOLIS MN 55440-1441 • USA
Copyright 2025, Graco Inc. All Graco manufacturing locations are registered to ISO 9001.

www.graco.com
Revision A, May 2025