

Sampling Valve

X004485A

EN

Used for calibration of a proportioner without the use of a spray gun. For use with the ProMix V Package Meter Proportioner. For professional use only.

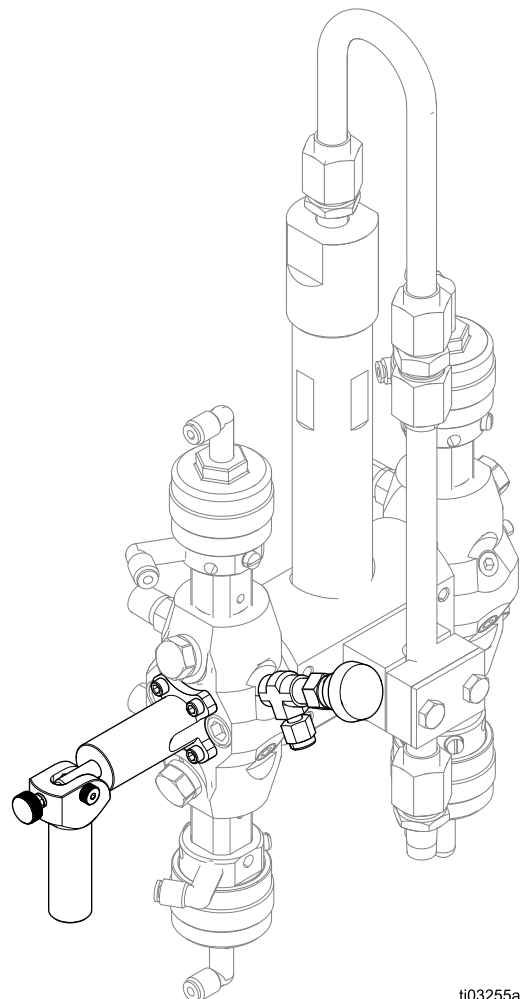
2008196

4000 psi (2.76 MPa, 276 bar) Maximum Working Pressure



Important Safety Instructions

Read all warnings and instructions in this manual and in any related manuals before using the equipment. Be familiar with the proper control and usage of the equipment. Save these instructions.



ti03255a

Contents

Contents 2

Related Manuals 2

Installation 3

Operation 4

Parts 6


Graco Standard Warranty 8






Related Manuals

Find English manuals and any available translations at www.graco.com.

English Manual Number	Description
3B0203	ProMix V Package Meter Proportioner Instructions
3B0361	ProMix V Package Meter Proportioner Repair-Parts
3B0236	Fluid Mix Manifold Instructions

Installation


WARNING

PRESSURIZED FLUID HAZARD

This equipment stays pressurized until pressure is manually relieved. To help prevent serious injury from pressurized fluid, such as skin injection, splashing fluid and moving parts, follow the Pressure Relief Procedure when you stop pumping and before cleaning, checking or servicing the equipment.

PERSONAL PROTECTIVE EQUIPMENT

Wear appropriate protective equipment when in the work area to help prevent serious injury, including eye injury, hearing loss, inhalation of toxic fumes, and burns.

1. Perform the Pressure Relief procedure in the ProMix V Package Meter Proportioner Instructions manual. See **Related Manuals**, page 2.
2. Perform the Shutdown procedure in the ProMix V Package Meter Proportioner Instructions manual. See **Related Manuals**, page 2.
3. Loosen the screws and remove the side plate and o-ring from both sides of the mix manifold. See FIG. 1.

NOTE: The side plate screws (103) can be re-used. Do not re-use the o-rings.

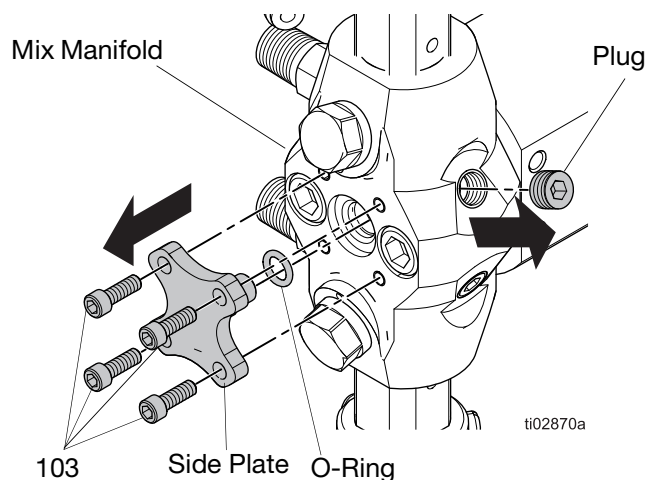


FIG. 1: Remove Side Plate and Plug

4. Apply a small amount of grease on the seal on the calibration shutoff valve (101), then install the calibration shutoff valve. See FIG. 2.
5. Remove the plugs. See FIG. 1.
6. Apply thread sealant to the needle valve threads, then install the needle valve (102) onto the mix manifold. See FIG. 2.
7. If necessary, install a customer supplied hose from the needle valves (102).

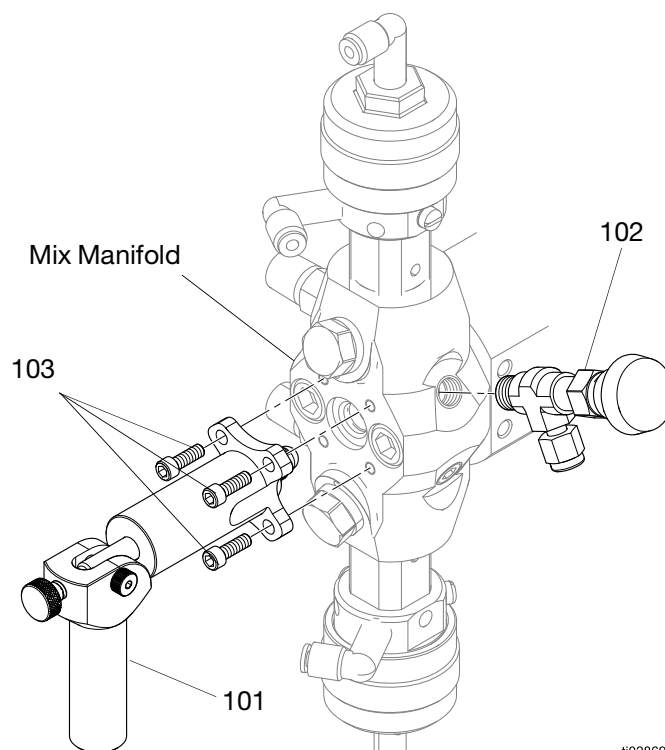








FIG. 2: Install Sampling Valve

ti02869a

Operation


WARNING

PRESSURIZED FLUID HAZARD

This equipment stays pressurized until pressure is manually relieved. To help prevent serious injury from pressurized fluid, such as skin injection, splashing fluid and moving parts, follow the Pressure Relief Procedure when you stop pumping and before cleaning, checking or servicing the equipment.

PERSONAL PROTECTIVE EQUIPMENT

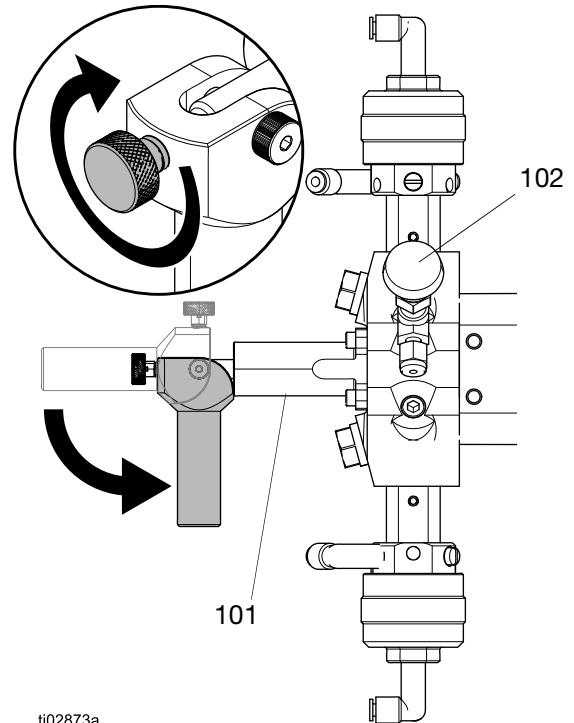
Wear appropriate protective equipment when in the work area to help prevent serious injury, including eye injury, hearing loss, inhalation of toxic fumes, and burns.

Sampling valves are used to help calibrate the ProMix V Package Meter Proportioner without using a spray gun. This reduces wasted material during the calibration process.

During normal operation, the needle valves (102) should be shut, and the handles on the calibration shutoff valves (101) should be pointed down.

To shut the needle valves (102):

1. Move the handles to the downward position. See FIG. 3.
2. Lock the handles in position by tightening the thumb screws. See FIG. 3.



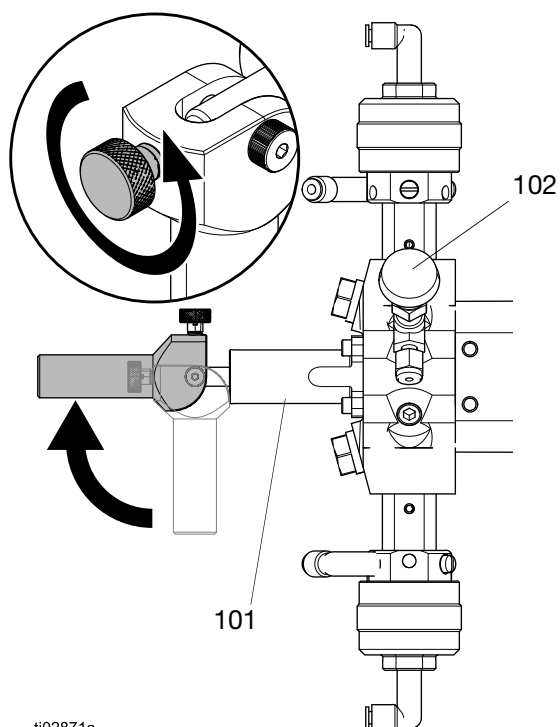
ti02873a

FIG. 3: Shut Needle Valves

When sampling, such as when calibrating the flow meters, the needle valves (102) should be open.

To open the needle valves:

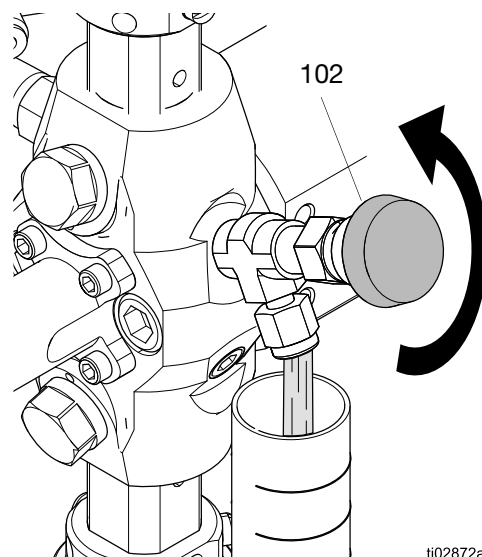
1. Loosen the thumb screws to unlock the handles. See FIG. 4.
2. Raise the handles on the calibration shutoff valves (101) to open the needle valves (102). When the needle valve (102) is open, flow to the mix manifold is shut off, and all flow is blocked to the gun. See FIG. 4.



ti02871a

FIG. 4: Open Needle Valves

3. Place a graduated cylinder or other measurement device unto the needle valve to capture fluid, then open the needle valve as shown in See FIG. 5.
4. Perform the calibration steps in the ProMix V Package Meter Proportioner Instructions manual. See **Related Manuals**, page 2.

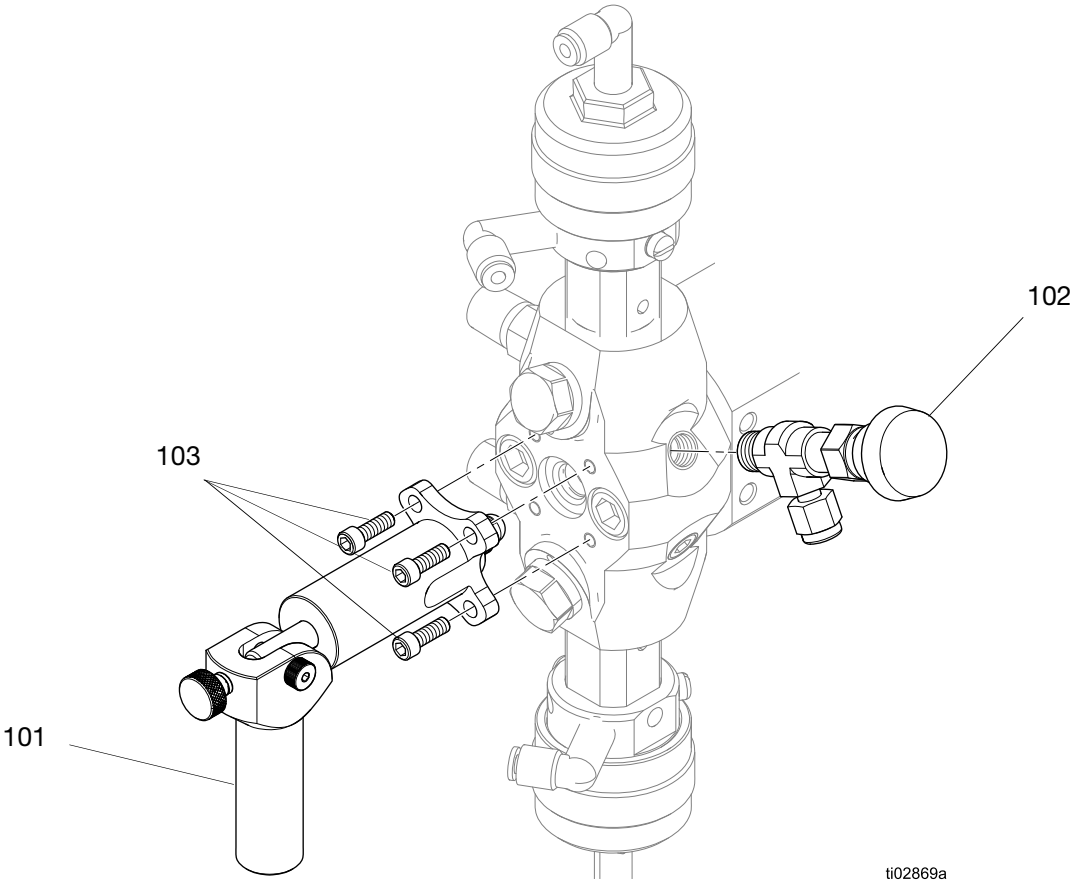


ti02872a

FIG. 5

Parts

2008196




ti02869a

FIG. 6

Ref.	Part	Description	Qty
101	---	VALVE, calibration shutoff	2
102	---	VALVE, needle 1/8 npt x 1/8 t ss	2
103	---	SCREW, cap, sh, 8-32 x 0.5 lg, sst	8

California Proposition 65

CALIFORNIA RESIDENTS

 **WARNING:** Cancer and reproductive harm – www.P65warnings.ca.gov.

Graco Standard Warranty

Graco warrants all equipment referenced in this document which is manufactured by Graco and bearing its name to be free from defects in material and workmanship on the date of sale to the original purchaser for use. With the exception of any special, extended, or limited warranty published by Graco, Graco will, for a period of twelve months from the date of sale, repair or replace any part of the equipment determined by Graco to be defective. This warranty applies only when the equipment is installed, operated and maintained in accordance with Graco's written recommendations.

This warranty does not cover, and Graco shall not be liable for general wear and tear, or any malfunction, damage or wear caused by faulty installation, misapplication, abrasion, corrosion, inadequate or improper maintenance, negligence, accident, tampering, or substitution of non-Graco component parts. Nor shall Graco be liable for malfunction, damage or wear caused by the incompatibility of Graco equipment with structures, accessories, equipment or materials not supplied by Graco, or the improper design, manufacture, installation, operation or maintenance of structures, accessories, equipment or materials not supplied by Graco.

This warranty is conditioned upon the prepaid return of the equipment claimed to be defective to an authorized Graco distributor for verification of the claimed defect. If the claimed defect is verified, Graco will repair or replace free of charge any defective parts. The equipment will be returned to the original purchaser transportation prepaid. If inspection of the equipment does not disclose any defect in material or workmanship, repairs will be made at a reasonable charge, which charges may include the costs of parts, labor, and transportation.

THIS WARRANTY IS EXCLUSIVE, AND IS IN LIEU OF ANY OTHER WARRANTIES, EXPRESS OR IMPLIED, INCLUDING BUT NOT LIMITED TO WARRANTY OF MERCHANTABILITY OR WARRANTY OF FITNESS FOR A PARTICULAR PURPOSE.

Graco's sole obligation and buyer's sole remedy for any breach of warranty shall be as set forth above. The buyer agrees that no other remedy (including, but not limited to, incidental or consequential damages for lost profits, lost sales, injury to person or property, or any other incidental or consequential loss) shall be available. Any action for breach of warranty must be brought within two (2) years of the date of sale.

GRACO MAKES NO WARRANTY, AND DISCLAIMS ALL IMPLIED WARRANTIES OF MERCHANTABILITY AND FITNESS FOR A PARTICULAR PURPOSE, IN CONNECTION WITH ACCESSORIES, EQUIPMENT, MATERIALS OR COMPONENTS SOLD BUT NOT MANUFACTURED BY GRACO. These items sold, but not manufactured by Graco (such as electric motors, switches, hose, etc.), are subject to the warranty, if any, of their manufacturer. Graco will provide purchaser with reasonable assistance in making any claim for breach of these warranties.

In no event will Graco be liable for indirect, incidental, special or consequential damages resulting from Graco supplying equipment hereunder, or the furnishing, performance, or use of any products or other goods sold hereto, whether due to a breach of contract, breach of warranty, the negligence of Graco, or otherwise.

FOR GRACO CANADA CUSTOMERS

The Parties acknowledge that they have required that the present document, as well as all documents, notices and legal proceedings entered into, given or instituted pursuant hereto or relating directly or indirectly hereto, be drawn up in English. Les parties reconnaissent avoir convenu que la rédaction du présente document sera en Anglais, ainsi que tous documents, avis et procédures judiciaires exécutés, donnés ou intentés, à la suite de ou en rapport, directement ou indirectement, avec les procédures concernées.

Graco Information

For the latest information about Graco products, visit www.graco.com.

For patent information, see www.graco.com/patents.

TO PLACE AN ORDER, contact your Graco distributor or call to identify the nearest distributor.

Toll Free Phone Number: 1-800-328-0211

*All written and visual data contained in this document reflects the latest product information available at the time of publication.
Graco reserves the right to make changes at any time without notice.*

Original instructions. This manual contains English. MM X004485

Graco Headquarters: Minneapolis

International Offices: Belgium, China, Japan, Korea

GRACO INC. AND SUBSIDIARIES • P.O. BOX 1441 • MINNEAPOLIS MN 55440-1441 • USA
Copyright 2024, Graco Inc. All Graco manufacturing locations are registered to ISO 9001.

www.graco.com
Revision A, December 2024