

Color/Catalyst Change Kits

X004863A

EN

Color/catalyst change kits for use with a ProMix V Package Meter Proportioner. For professional use only.

2007426

4000 psi, 2 Valve Color/Catalyst Change Kit

2007859

4000 psi, 3 Valve Color/Catalyst Change Kit

2007860

4000 psi, 4 Valve Color/Catalyst Change Kit

2007861

4000 psi, 5 Valve Color/Catalyst Change Kit

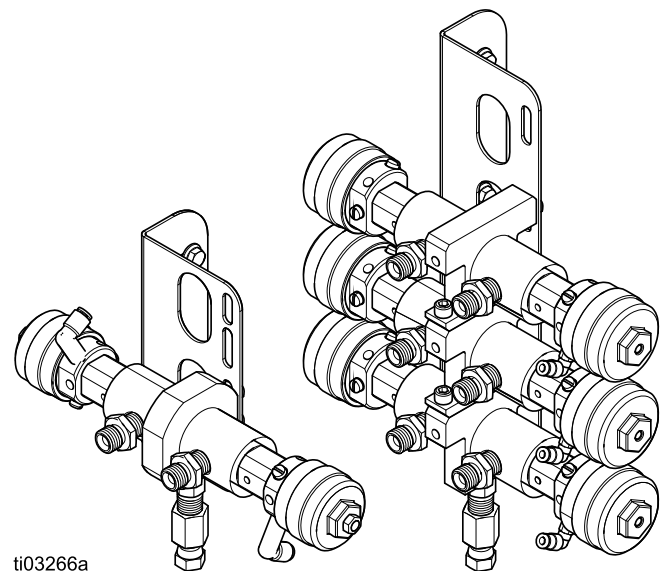
2007862

4000 psi, 6 Valve Color/Catalyst Change Kit



Important Safety Instructions

Read all warnings and instructions in the ProMix V Package Meter Proportioner Instructions manual. Save all instructions.



ti03266a

Parts

2007426

NOTE: Kit 2007426 is shipped pre-assembled.

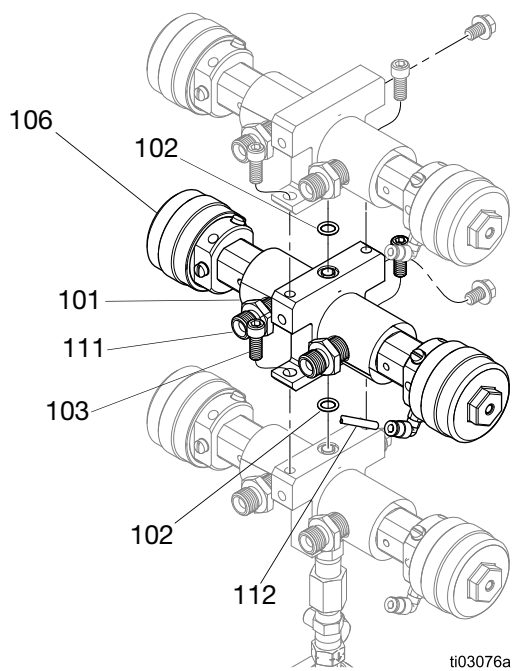


FIG. 1

Ref.	Part	Description	Qty
101	---	MANIFOLD, middle, color change	1
102	---	PACKING, o-ring, PTFE	2
103	---	SCREW, cap, sch	2
104*	---	RETAINER, seat, dump valve	2
105*	---	PACKING, o-ring	2
106	---	VALVE, dispense, 4K	2
107*	---	PACKING, o-ring #2-116, PTFE	2
108	---	PLUG, pipe, hdl	2
109*	---	LUBRICANT, grease	1
110*	---	SEALANT, pipe, sst	1
111	---	FITTING, 1/4 NPSM x 1/4 NPT, sst	2
112	598095	TUBE, 5/32 od, nylon	5.21 ft

* Not shown.

2007859

NOTE: Kit 2007859 is shipped pre-assembled.

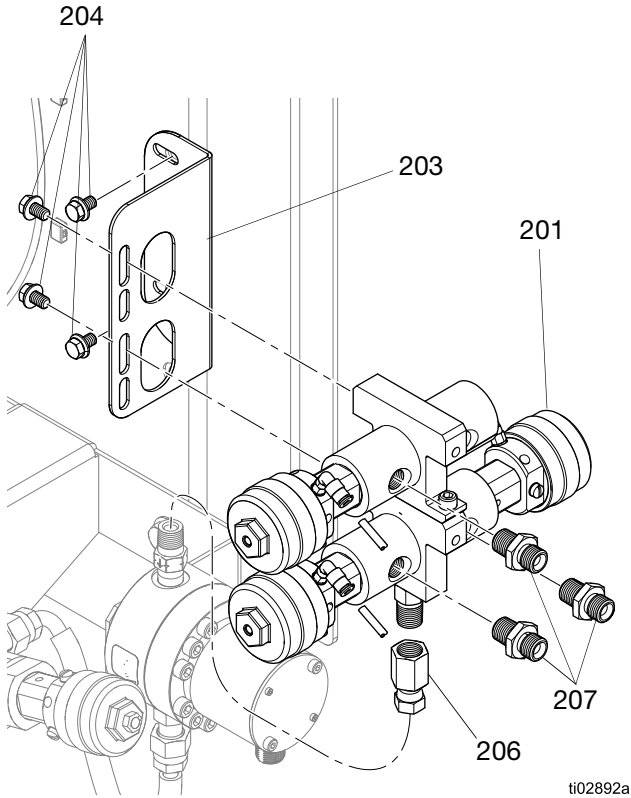


FIG. 2

Ref.	Part	Description	Qty
201	---	ASSEMBLY, color/catalyst change, 4000 psi, 3 valve	1
202*	---	BRACKET, mounting, color change, left, painted	1
203	---	BRACKET, mounting, catalyst change, painted	1
204	---	SCREW, mach, hex serrated	7
205*	---	TUBE, 5/32 od, nylon	7.81 ft
206	---	SWIVEL, union	1
207	---	FITTING, 1/4 NPSM X 1/4 NPT, SST	3

* Not shown.

2007860

NOTE: Kit 2007860 is shipped pre-assembled.

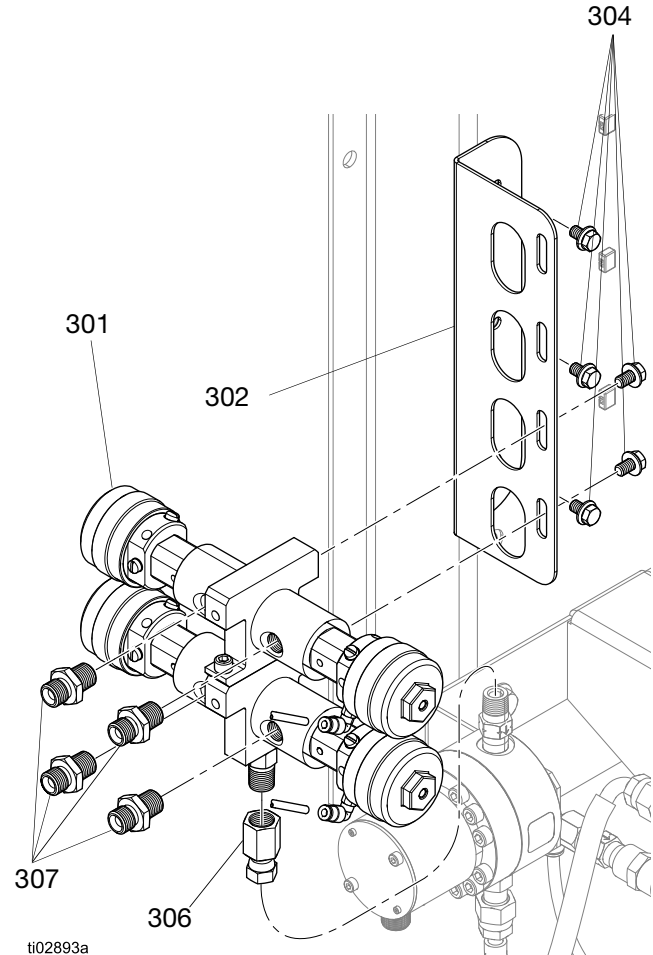


FIG. 3

Ref.	Part	Description	Qty
301	---	ASSEMBLY, color/catalyst change, 4000 psi, 4 valve	1
302	---	BRACKET, mounting, color change, left, painted	1
303*	---	BRACKET, mounting, catalyst change, painted	1
304	---	SCREW, mach, hex serrated	7
305*	---	TUBE, 5/32 od, nylon	10.42 ft
306	---	SWIVEL, union	1
307	---	FITTING, 1/4 NPSM X 1/4 NPT, SST	4

* Not shown.

2007861

NOTE: Kit 2007861 is shipped pre-assembled.

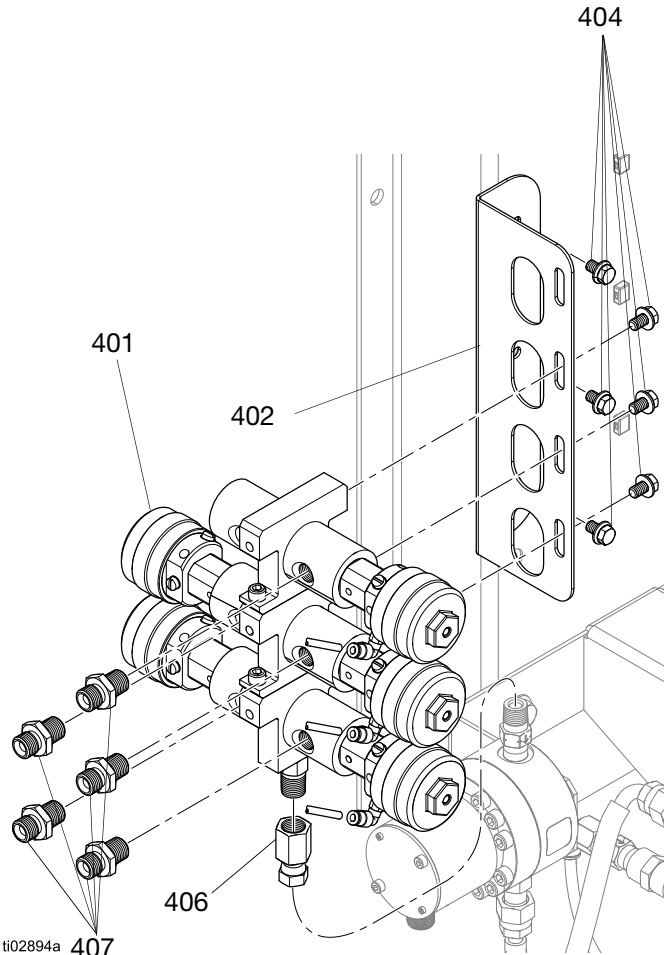


FIG. 4

Ref.	Part	Description	Qty
401	---	ASSEMBLY, color/catalyst change, 4000 psi, 5 valve	1
402	---	BRACKET, mounting, color change, left, painted	1
403*	---	BRACKET, mounting, catalyst change, painted	1
404	---	SCREW, mach, hex serrated	8
405*	---	TUBE, 5/32 od, nylon	13.02 ft
406	---	SWIVEL, union	1
407	---	FITTING, 1/4 NPSM X 1/4 NPT, SST	5

* Not shown.

2007862

NOTE: Kit 2007862 is shipped pre-assembled.

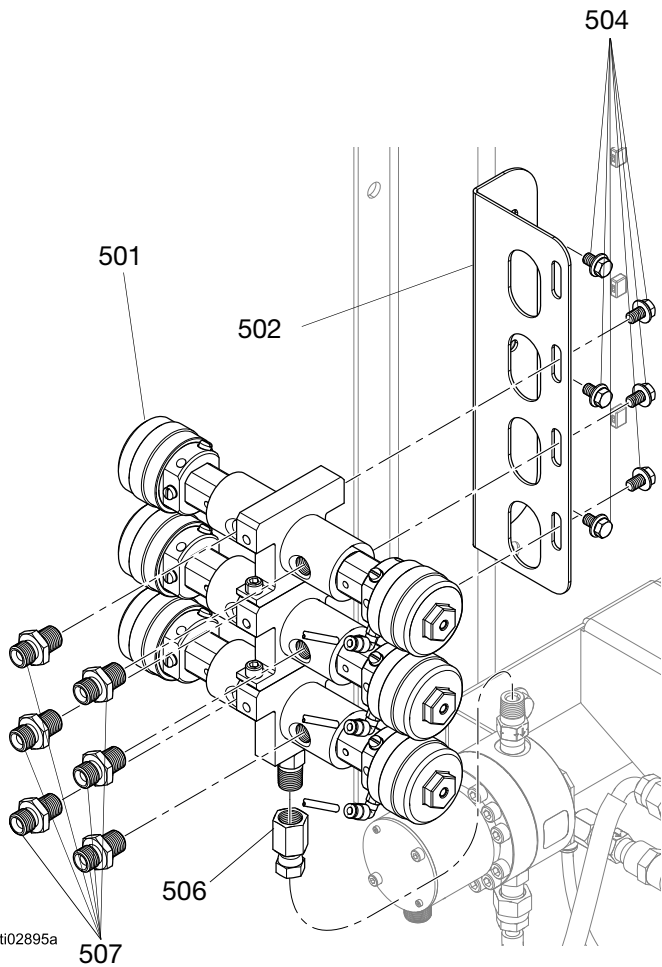



FIG. 5

Ref.	Part	Description	Qty
501	---	ASSEMBLY, color/catalyst change, 4000 psi, 6 valve	1
502	---	BRACKET, mounting, color change, left, painted	1
503*	---	BRACKET, mounting, catalyst change, painted	1
504	---	SCREW, mach, hex serrated	8
505*	---	TUBE, 5/32 od, nylon	15.63 ft
506	---	SWIVEL, union	1
507	---	FITTING, 1/4 NPSM X 1/4 NPT, SST	6

* Not shown.

California Proposition 65

CALIFORNIA RESIDENTS

 **WARNING:** Cancer and reproductive harm – www.P65warnings.ca.gov.

Graco Standard Warranty

Graco warrants all equipment referenced in this document which is manufactured by Graco and bearing its name to be free from defects in material and workmanship on the date of sale to the original purchaser for use. With the exception of any special, extended, or limited warranty published by Graco, Graco will, for a period of twelve months from the date of sale, repair or replace any part of the equipment determined by Graco to be defective. This warranty applies only when the equipment is installed, operated and maintained in accordance with Graco's written recommendations.

This warranty does not cover, and Graco shall not be liable for general wear and tear, or any malfunction, damage or wear caused by faulty installation, misapplication, abrasion, corrosion, inadequate or improper maintenance, negligence, accident, tampering, or substitution of non-Graco component parts. Nor shall Graco be liable for malfunction, damage or wear caused by the incompatibility of Graco equipment with structures, accessories, equipment or materials not supplied by Graco, or the improper design, manufacture, installation, operation or maintenance of structures, accessories, equipment or materials not supplied by Graco.

This warranty is conditioned upon the prepaid return of the equipment claimed to be defective to an authorized Graco distributor for verification of the claimed defect. If the claimed defect is verified, Graco will repair or replace free of charge any defective parts. The equipment will be returned to the original purchaser transportation prepaid. If inspection of the equipment does not disclose any defect in material or workmanship, repairs will be made at a reasonable charge, which charges may include the costs of parts, labor, and transportation.

THIS WARRANTY IS EXCLUSIVE, AND IS IN LIEU OF ANY OTHER WARRANTIES, EXPRESS OR IMPLIED, INCLUDING BUT NOT LIMITED TO WARRANTY OF MERCHANTABILITY OR WARRANTY OF FITNESS FOR A PARTICULAR PURPOSE.

Graco's sole obligation and buyer's sole remedy for any breach of warranty shall be as set forth above. The buyer agrees that no other remedy (including, but not limited to, incidental or consequential damages for lost profits, lost sales, injury to person or property, or any other incidental or consequential loss) shall be available. Any action for breach of warranty must be brought within two (2) years of the date of sale.

GRACO MAKES NO WARRANTY, AND DISCLAIMS ALL IMPLIED WARRANTIES OF MERCHANTABILITY AND FITNESS FOR A PARTICULAR PURPOSE, IN CONNECTION WITH ACCESSORIES, EQUIPMENT, MATERIALS OR COMPONENTS SOLD BUT NOT MANUFACTURED BY GRACO. These items sold, but not manufactured by Graco (such as electric motors, switches, hose, etc.), are subject to the warranty, if any, of their manufacturer. Graco will provide purchaser with reasonable assistance in making any claim for breach of these warranties.

In no event will Graco be liable for indirect, incidental, special or consequential damages resulting from Graco supplying equipment hereunder, or the furnishing, performance, or use of any products or other goods sold hereto, whether due to a breach of contract, breach of warranty, the negligence of Graco, or otherwise.

FOR GRACO CANADA CUSTOMERS

The Parties acknowledge that they have required that the present document, as well as all documents, notices and legal proceedings entered into, given or instituted pursuant hereto or relating directly or indirectly hereto, be drawn up in English. Les parties reconnaissent avoir convenu que la rédaction du présente document sera en Anglais, ainsi que tous documents, avis et procédures judiciaires exécutés, donnés ou intentés, à la suite de ou en rapport, directement ou indirectement, avec les procédures concernées.

Graco Information

For the latest information about Graco products, visit www.graco.com.

For patent information, see www.graco.com/patents.

TO PLACE AN ORDER, contact your Graco distributor or call to identify the nearest distributor.

Toll Free Phone Number: 1-800-328-0211

*All written and visual data contained in this document reflects the latest product information available at the time of publication.
Graco reserves the right to make changes at any time without notice.*

Original instructions. This manual contains English. MM X004863

Graco Headquarters: Minneapolis

International Offices: Belgium, China, Japan, Korea

GRACO INC. AND SUBSIDIARIES • P.O. BOX 1441 • MINNEAPOLIS MN 55440-1441 • USA
Copyright 2024, Graco Inc. All Graco manufacturing locations are registered to ISO 9001.

www.graco.com
Revision A, December 2024