

GLC 2200 Wiring Harness Kit for G3® Standard HF Pump

Used to interface the GLC 2200 Lubrication Controller with the G3 Standard HF Pump and pump accessories. For professional use only. Not approved for use in explosive atmospheres or hazardous (classified) locations.

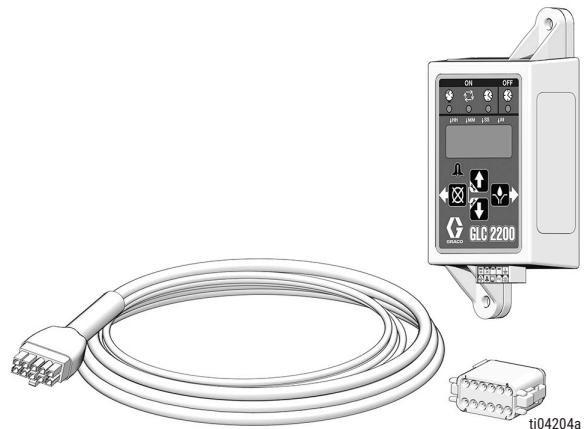


Important Safety Instructions

Read all warnings and instructions in this manual and the GLC2200 Lubrication Controller instruction manual included with your unit. Save these instructions.



graco.com/contact



Kit Number: 2011788 – 15 ft

Images are for illustrative purposes only

INSTALLATION

Follow this procedure to install the GLC 2200 Wiring Harness Kit for the G3 Standard HF Pump.

1. Verify that the connector end of the cable is not plugged in to the GLC 2200 controller. Disconnect if necessary.
2. Remove 2–3 in. (5.1–7.6 cm) of the outer insulation (A) from the bare end of the cable.

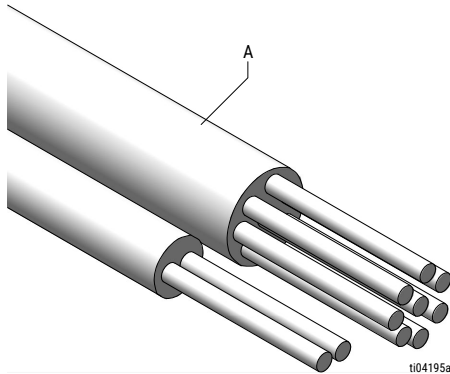


Figure 1-1: Remove the Outer Insulation

3. Strip approximately 0.25 in. (0.65 cm) from each wire (B).

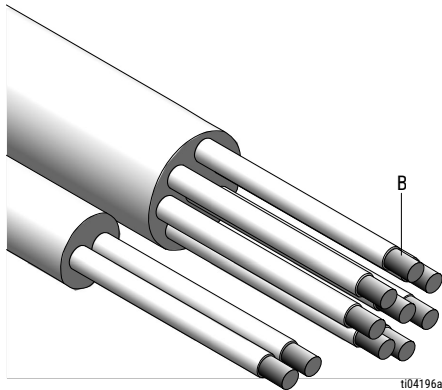


Figure 1-2: Strip Each Wire

4. Crimp the stripped end of the eight core wires cable wires with connector pins using the crimping tool. See instructions from manufacturer (Deutsch).

5. Insert the crimped wire pins into the ports from the flat end of the Deutsch connector, matching each wire color according to the following figures and table. Verify that all negative and positive wire colors are correctly assigned.

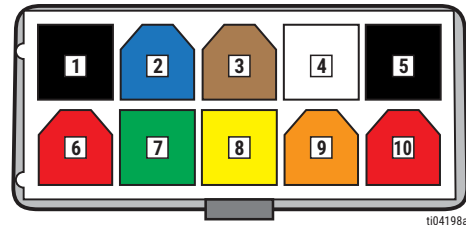


Figure 1-3: GLC 2200 Port Pin Diagram

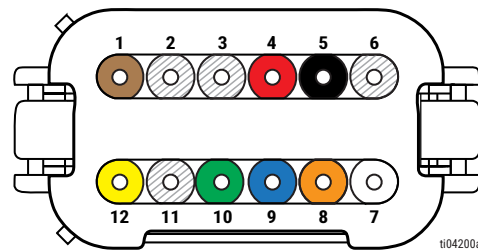


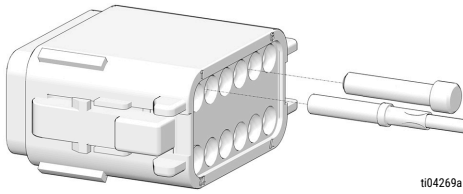
Figure 1-4: 12-Pin Deutsch Cable Connector Pin Diagram (looking from the flat end of connector; ports 2, 3, 6, 11 not used)

GLC 2200 PIN	COLOR	DESCRIPTION	+/-	DEUTSCH PIN
1	Black	Signal	-	5
2	Blue	Vent	-	9
3	Brown	Low Level	-	1
4	White	Pressure Switch	-	7
5	Black	Voltage Input	-	Battery (-)
6	Red	Signal	+	4
7	Green	Vent	+	10
8	Yellow	Low Level	+	12
9	Orange	Pressure Switch	+	8
10	Red	Voltage Input	+	Battery (+)

INSTALLATION

6. Insert plugs provided into the four unused ports (2, 3, 6, 11) on the connector.
8. Plug the pre-wired cable connector of the controller cable harness (J) into the port of the GLC 2200 controller.

Figure 1-5: Connector Pins and Plugs (Typical)



7. Insert wedge into the connector opposite the wires.

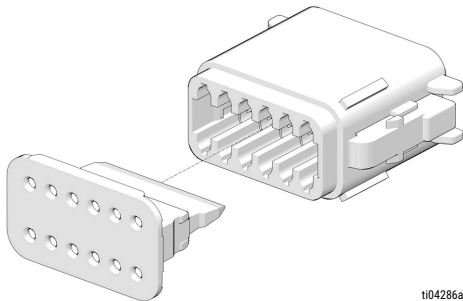


Figure 1-6: Connector Wedge

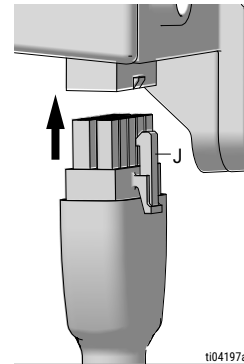


Figure 1-7: Connect the Cable to the Controller Port

9. Connect the Deutsch connector (H) to the pump cable harness (E).
10. Connect the red (+) and black (-) wires (A, B) to the corresponding terminals on the battery.

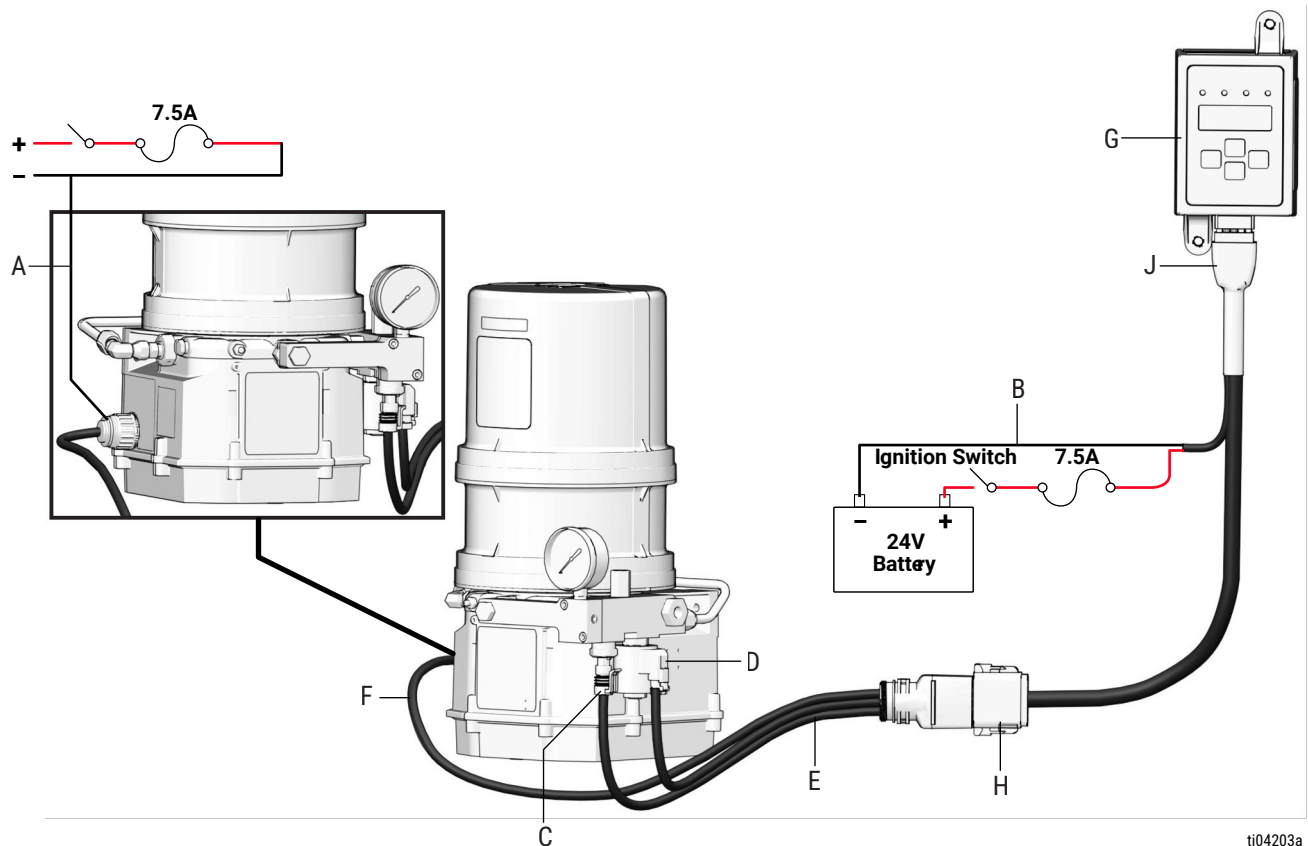


Figure 1-8: Wiring Diagram

INSTALLATION

A	Power to Pump/Motor
B	Power to Controller
C	Pressure Switch
D	Vent Valve
E	Pump Cable Harness (included with pump, not included with the harness kit)
F	Signal and Low Level Switch
G	Controller GLC 2200
H	12-Pin Deutsch Cable Connector
J	Controller Cable Harness