



ReactorConnect™
Sample Reports



Better manage your jobs, productivity and equipment

PROVEN QUALITY. LEADING TECHNOLOGY.

Reactor Ratio Summary Report

January 29, 2019

IMEI	Reactor Name	Start Date	End Date	Material Usage A+B (gallons)	Average Ratio
357520072734862	Graco app simulator	1/28/19	1/28/19	116	1.01:1
357520076059928	SPFA #1	1/28/19	1/28/19	74	1.00:1
357520076060785	SPFA #2	1/28/19	1/28/19	142	0.99:1

Report Notes:

- The report displays total material usage and the average ratio for each Reactor, over the selected date range
- Choose which Reactor(s) to include in report
- Choose the date for the report

SAMPLE DATA

Reactor Ratio Detailed Report

January 29, 2019

IMEI	Reactor Name	Start Date	End Date	Material Usage A+B (gallons)	Avg Ratio	Ratio Range	Ratio Alarm Count	Temp A Setpoint (°F)	Avg Temp A (°F)	Temp B Setpoint (°F)	Avg Temp B (°F)	Temp Hose Setpoint (°F)	Avg Temp Hose (°F)	Pressure Setpoint (psi)	Avg Pressure A and B (psi)
357520072734862	Graco app simulator	1/28/19	1/28/19	116	1.01:1	0.99 - 1.02:1	---	74 - 75	75	74 - 75	74	84 - 85	84	1,280 - 1,280	1,282
357520076059928	SPFA #1	1/28/19	1/28/19	74	1.00:1	0.95 - 1.04:1	---	130	130	130	130	130	130	1,200	1,199
357520076060785	SPFA #2	1/28/19	1/28/19	142	0.99:1	0.96 - 1.06:1	1	125 - 125	125	120 - 125	124	125 - 125	124	1,150	1,149

Report Notes:

- The report displays detailed information for each Reactor over the selected date range. The data includes total material usage, average ratio, and total ratio range, temperature and pressure set points and average spray temperatures and pressure.
- Choose which Reactor(s) to include in report
- Choose the date range for the report

SAMPLE DATA

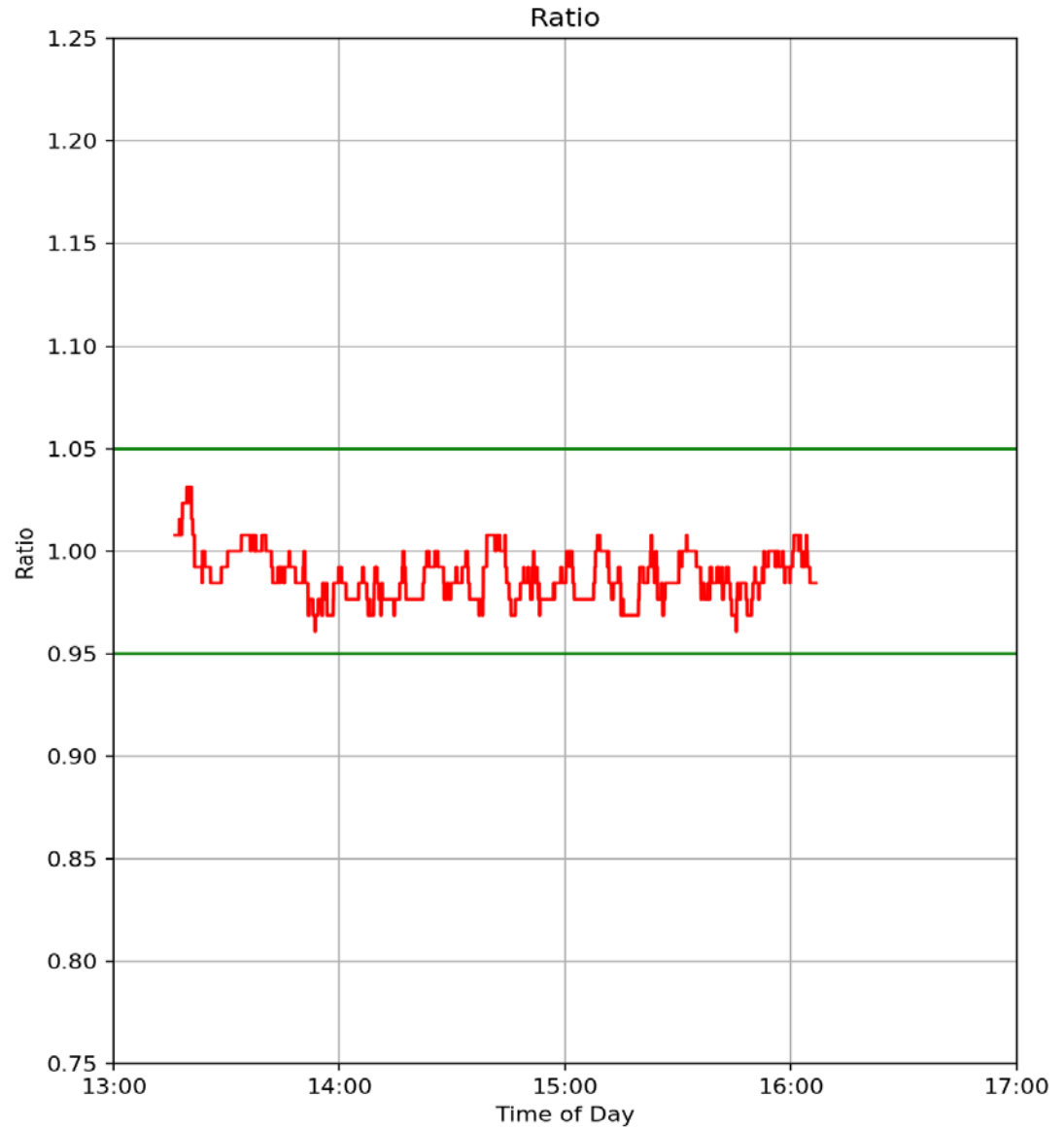
Reactor Ratio Graph Report

January 29, 2019

System Name: SPFA #1
IMEI: 357520076059928
System Type: E-30

Report Notes:

- The report generates a ratio graph for a Reactor
- The graph is a quick visual way to identify the ratio variability and if the ratio was within tolerance throughout the day
- Choose the Reactor to include in the report
- Choose the date for the report



SAMPLE DATA

Reactor Daily Report 2019-02-11 to 2019-02-17

February 26, 2019

IMEI	Reactor Name	Date	Start Spray Time	End Spray Time	Number of Alarms	Cycle Count	Material Usage (gallons)	Power On Time (hours)	Actual Spray Time (hours)	Productivity (gallons/hour)	Machine Utilization
111111111111111	Graco #1	02/11/19	8:05 AM	1:05 PM	1	177	11.2	5.0	0.9	2.3	18%
111111111111111	Graco #1	02/12/19	7:24 AM	12:36 PM	1	925	58.6	5.2	3.1	11.3	60%
111111111111111	Graco #1	02/13/19	7:36 AM	1:42 PM	2	358	22.7	6.1	1.6	3.7	25%
111111111111111	Graco #1	02/14/19	7:12 AM	1:24 PM	5	1,119	70.9	6.2	2.8	11.4	45%
111111111111111	Graco #1	02/15/19	6:36 AM	1:13 PM	0	627	39.8	6.5	2.2	6.1	33%
111111111111111	Graco #1	02/16/19	---	---	---	0	0.0	0.0	0.0	---	---
111111111111111	Graco #1	02/17/19	---	---	---	0	0.0	0.0	0.0	---	---
222222222222222	Graco #2	02/11/19	---	---	---	0	0.0	0.0	0.0	---	---
222222222222222	Graco #2	02/12/19	10:15 AM	3:48 PM	2	628	39.8	5.2	2.5	7.7	48%
222222222222222	Graco #2	02/13/19	9:36 AM	4:54 PM	0	582	36.9	6.7	2.3	5.5	34%
222222222222222	Graco #2	02/14/19	9:58 AM	2:45 PM	0	699	44.3	4.8	2.2	9.3	45%
222222222222222	Graco #2	02/15/19	7:55 AM	4:28 PM	3	343	21.7	6.5	1.7	3.3	26%
222222222222222	Graco #2	02/16/19	---	---	---	0	0.0	0.0	0.0	---	---
222222222222222	Graco #2	02/17/19	---	---	---	0	0.0	0.0	0.0	---	---

Report Notes:

- The report displays summary data for each day, for each Reactor, over the selected date range
 - Ex: Run each morning to see summary of all jobs sprayed the previous day.
Good tool to compare performance of each rig/crew.
- Choose which Reactor(s) to include in report
- Choose date range for report. Examples include a day, week, month

SAMPLE DATA

Reactor Summary Report 2019-02-11 to 2019-02-17

February 26, 2019

IMEI	Reactor Name	Cycle Count	Material Usage (gallons)	Power On Time (hours)	Actual Spray Time (hours)	Productivity (gallons/hour)	Machine Utilization	Days of Use
1111111111111111	Graco #1	3206	203.3	29.0	10.5	7.0	36%	5
2222222222222222	Graco #2	3664	100.1	11.6	4.6	8.6	40%	3
3333333333333333	Graco #3	2252	142.8	23.1	8.6	6.2	37%	4
4444444444444444	Graco #4	2395	177.2	31.7	7.8	5.6	25%	5
5555555555555555	Graco #5	1248	92.3	5.7	2.8	16.2	49%	2
Total	---	12765	715.6	101.1	34.3	7.1	34%	19

Report Notes:

- The report summarizes the data to provide totals for each Reactor over the selected date range
 - Ex: Run each week or month to see summary of each Reactor for all jobs sprayed over selected date range.
 - Good tool to compare performance of each rig/crew to understand their productivity and machine utilization.
- The report "Total" row provides overall totals for all Reactors includes in the report over the selected date range
- Choose which Reactor(s) to include in report
- Choose date range for report. Examples include a day, week, month, year

SAMPLE DATA

Reactor Status Report

February 27, 2019

IMEI	Reactor Name	System Type	Reactor Part Number	Reactor Serial Number	Lifetime Cycles	Hose Control Mode	Pressure Imbalance Alarm Enabled	Pressure Imbalance Alarm (psi)	Inlet Sensors Enabled	Flow Meters Installed	Ratio Tolerance	Ratio Alarms Enabled	Ratio Smart Control Enabled	Software Version
1111111111111111	Graco #1	E-30	272011	A133XX	361,259	Temperature	Yes	500	Yes	Yes	5%	Yes	Yes	3.02.010
2222222222222222	Graco #2	H-30	17H031	A104XX	305,338	Temperature	Yes	500	No	No	---	No	No	3.02.010
3333333333333333	Graco #3	E-30	272111	A129XX	574,525	Temperature	Yes	500	Yes	Yes	5%	No	Yes	3.02.010
4444444444444444	Graco #4	H-30	17H032	A105XX	780,428	Temperature	Yes	600	Yes	Yes	7%	Yes	No	3.02.010
5555555555555555	Graco #5	H-40	17H044	A109XX	379,307	Current	No	500	No	No	---	No	No	3.02.010
6666666666666666	Graco #6	H-40	17H044	A115XX	58,858	Temperature	Yes	400	Yes	Yes	5%	Yes	No	3.02.010
7777777777777777	Graco #7	E-30i	272089	A152XX	17,952	Temperature	Yes	500	Yes	Yes	5%	Yes	Yes	3.02.010

Report Notes:

- The report displays the status and configuration of each Reactor
 - Ex: Run report to quickly view basic information about each Reactor, how it is set-up, what alarms are enabled, what hardware is installed, etc.
- Choose which Reactor(s) to include in report

SAMPLE DATA

Reactor Alarm Report 2019-02-11 to 2019-02-17
February 26, 2019

IMEI	Reactor Name	Event Date and Time	Event Code	Event Description
1111111111111111	Graco #1	02/14/19 10:33:29	T6DH	(E04) Sensor Error Hose
1111111111111111	Graco #1	02/14/19 10:40:12	A4DA	High Current A
1111111111111111	Graco #1	02/14/19 10:42:41	P1FA	Low Inlet Pressure A
1111111111111111	Graco #1	02/14/19 10:44:53	P1FA	Low Inlet Pressure A
1111111111111111	Graco #1	02/14/19 10:51:31	P7AX	(E24) Pressure Imbalance A High
1111111111111111	Graco #1	02/14/19 10:57:11	P7AX	(E24) Pressure Imbalance A High
1111111111111111	Graco #1	02/14/19 13:31:46	P7AX	(E24) Pressure Imbalance A High
1111111111111111	Graco #1	02/14/19 14:54:21	P7AX	(E24) Pressure Imbalance A High
1111111111111111	Graco #1	02/15/19 14:02:07	P6Ax	Pressure Sensor Error A
2222222222222222	Graco #2	02/11/19 14:08:41	T6DH	(E04) Sensor Error Hose
2222222222222222	Graco #2	02/12/19 12:08:27	R4D0	Off Ratio Low Flow B
2222222222222222	Graco #2	02/12/19 14:15:51	R4D0	Off Ratio Low Flow B

Report Notes:

- The report displays all Alarm codes for each day, for each Reactor, over the selected date range
 - Ex: Run report to better understand the issues each rig/crew may be experiencing. If the same alarm(s) occur frequently it may be an indication of a machine issue or of the crew not properly resolving an issue.
- Choose which Reactor(s) to include in report
- Choose date range for report. Examples include a day or week

SAMPLE DATA

Reactor Temperature/Pressure Graph

January 2, 2019

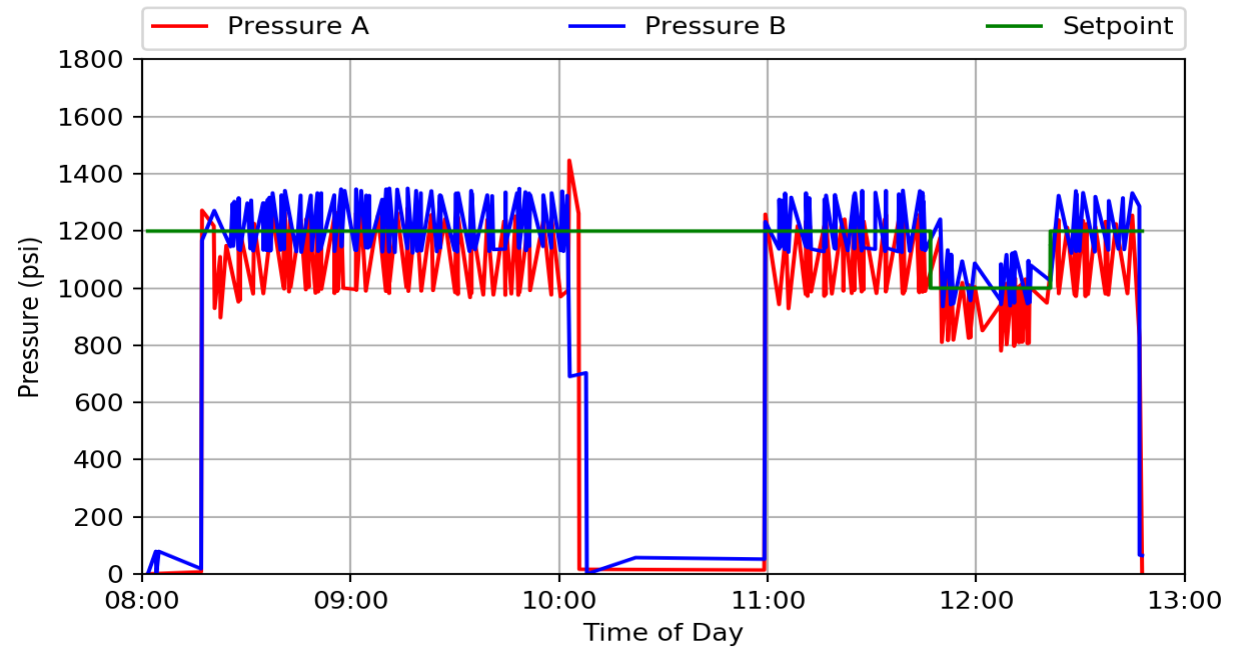
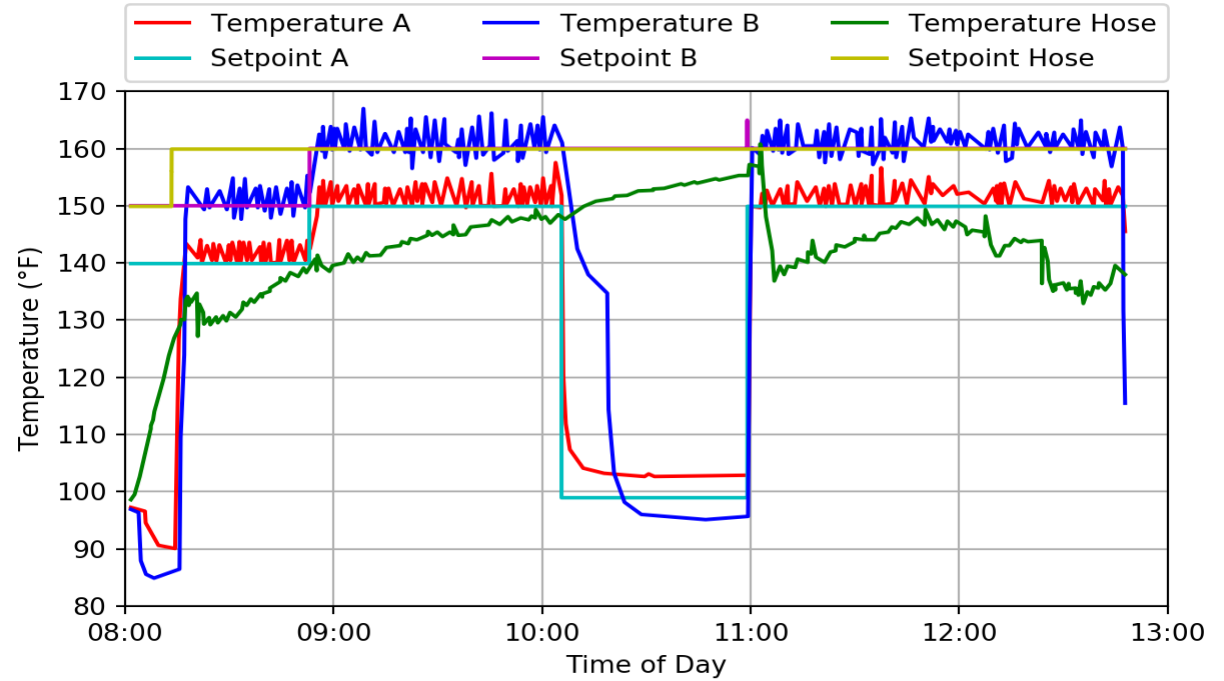
System Name: Graco #1

IMEI: 111111111111111

System Type: E-30

Report Notes:

- The report generates both temperature and pressure graphs for a Reactor
- The graphs are a quick visual way to identify temperature/pressure issues, set points, run times, etc.
- Choose the Reactor to include in the report
- Choose the date for the report



SAMPLE DATA

Reactor Inlet Temperature/Pressure Graph

October 19, 2020

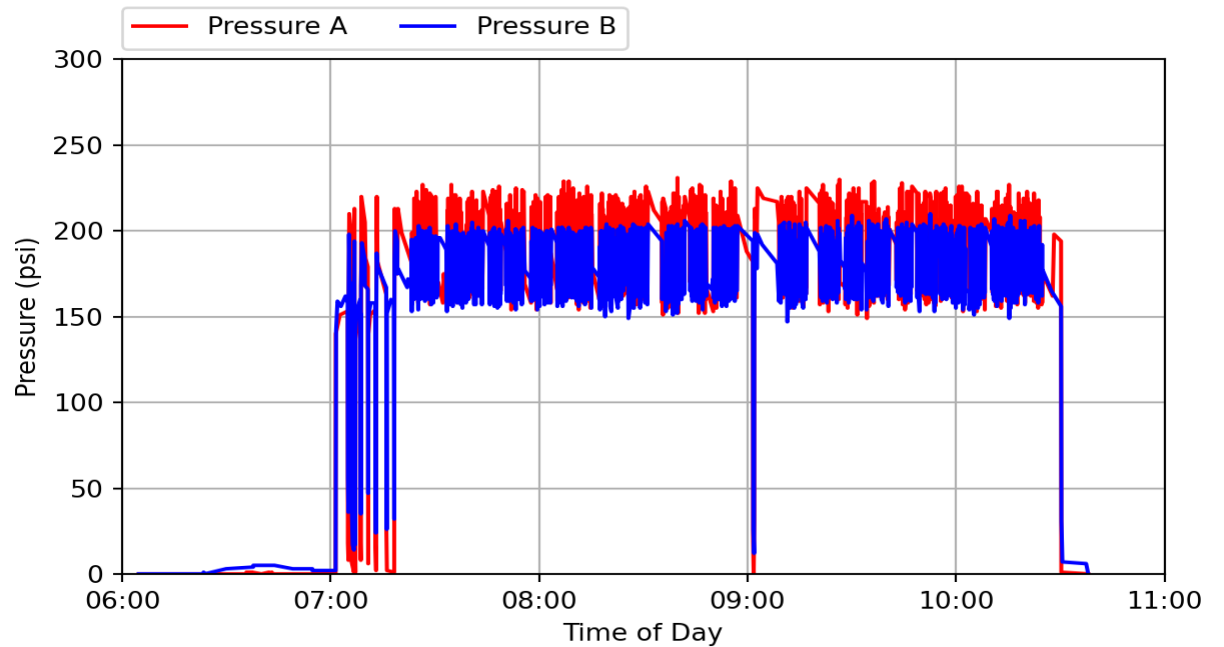
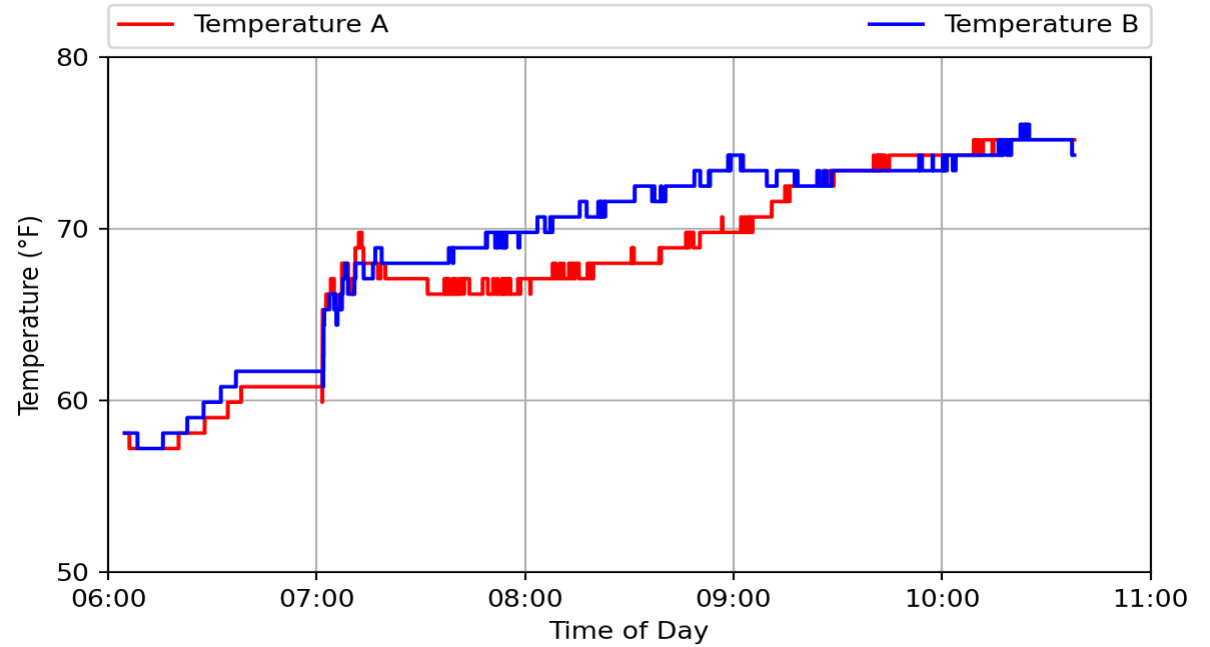
System Name: Graco #1

IMEI: 111111111111111

System Type: E-30

Report Notes:

- The report generates both inlet temperature and pressure graphs for a Reactor
- The graphs are a quick visual way to identify inlet temperature/pressure issues
- Choose the Reactor to include in the report
- Choose the date for the report



SAMPLE DATA

Reactor Data Report 2019-02-11 to 2019-02-17

February 14, 2019

IMEI	Reactor Name	Date/Time	Temp A (°F)	Temp B (°F)	Temp Hose (°F)	Setpoint Temp A (°F)	Setpoint Temp B (°F)	Setpoint Temp Hose (°F)	Pressure A (psi)	Pressure B (psi)	Setpoint Pressure (psi)	Lifetime Cycle Counts	Resettable Cycle Counts	Inlet Temp A (°F)	Inlet Temp B (°F)	Inlet Pressure A (psi)	Inlet Pressure B (psi)	Average Ratio (x:1)
1111111111111111	Graco #1	02/14/19 09:08:00	150	161	126	150	160	160	1,026	840	1,000	559,460	90,590	84	85	94	171	---
1111111111111111	Graco #1	02/14/19 09:09:00	150	160	128	---	---	---	1,018	836	---	559,460	90,590	84	84	92	170	---
1111111111111111	Graco #1	02/14/19 09:10:00	150	160	128	---	---	---	796	1,004	---	559,473	90,603	84	84	91	168	---
1111111111111111	Graco #1	02/14/19 09:11:00	149	159	129	---	---	---	793	1,006	---	559,503	90,633	83	84	89	172	0.98
1111111111111111	Graco #1	02/14/19 09:12:00	150	159	131	---	---	---	846	1,029	---	559,529	90,659	83	84	90	162	0.99
1111111111111111	Graco #1	02/14/19 09:13:00	151	161	132	---	---	---	879	1,025	---	559,544	90,674	83	84	92	192	0.98
1111111111111111	Graco #1	02/14/19 09:14:00	151	160	131	---	---	---	880	1,035	---	559,559	90,689	83	84	98	179	0.99
1111111111111111	Graco #1	02/14/19 09:15:00	151	161	131	---	---	---	889	1,039	---	559,573	90,703	83	84	87	168	0.99
1111111111111111	Graco #1	02/14/19 09:16:00	152	161	132	---	---	---	933	1,056	---	559,585	90,715	83	84	81	187	0.98
1111111111111111	Graco #1	02/14/19 09:17:00	151	160	133	---	---	---	942	1,051	---	559,585	90,715	83	84	81	177	0.98
1111111111111111	Graco #1	02/14/19 09:18:00	150	160	133	---	---	---	940	1,045	---	559,585	90,715	82	84	82	180	---
1111111111111111	Graco #1	02/14/19 09:19:00	150	160	134	---	---	---	941	1,041	---	559,585	90,715	82	84	83	177	---
1111111111111111	Graco #1	02/14/19 09:20:00	150	160	134	---	---	---	942	1,037	---	559,585	90,715	82	84	83	170	---
1111111111111111	Graco #1	02/14/19 09:21:00	149	160	135	---	---	---	942	1,034	---	559,585	90,715	82	84	83	167	---
1111111111111111	Graco #1	02/14/19 09:22:00	149	160	135	---	---	---	921	1,033	---	559,589	90,719	82	84	90	175	0.98
1111111111111111	Graco #1	02/14/19 09:23:00	151	161	134	---	---	---	872	1,021	---	559,606	90,736	82	84	92	188	0.98
1111111111111111	Graco #1	02/14/19 09:24:00	150	160	132	---	---	---	899	1,036	---	559,632	90,762	82	84	90	187	0.99
1111111111111111	Graco #1	02/14/19 09:25:00	151	160	133	---	---	---	914	1,041	---	559,654	90,784	83	85	89	176	0.99
1111111111111111	Graco #1	02/14/19 09:26:00	151	160	135	---	---	---	923	1,036	---	559,674	90,804	83	85	88	179	0.98
1111111111111111	Graco #1	02/14/19 09:27:00	151	160	135	---	---	---	927	1,040	---	559,693	90,823	83	86	93	171	0.98
1111111111111111	Graco #1	02/14/19 09:28:00	151	161	135	---	---	---	969	1,057	---	559,710	90,840	84	86	89	168	0.98
1111111111111111	Graco #1	02/14/19 09:29:00	150	160	136	---	---	---	931	1,037	---	559,731	90,861	84	86	88	187	0.98
1111111111111111	Graco #1	02/14/19 09:30:00	151	160	136	---	---	---	975	1,062	---	559,752	90,882	84	87	89	172	0.98
1111111111111111	Graco #1	02/14/19 09:31:00	151	160	137	---	---	---	977	1,054	---	559,770	90,900	85	87	90	176	0.98
1111111111111111	Graco #1	02/14/19 09:32:00	152	160	138	---	---	---	990	1,057	---	559,786	90,916	85	87	91	194	0.98
1111111111111111	Graco #1	02/14/19 09:33:00	151	160	138	---	---	---	974	1,036	---	559,802	90,932	85	88	85	184	0.98
1111111111111111	Graco #1	02/14/19 09:34:00	151	160	139	---	---	---	984	1,043	---	559,819	90,949	85	88	92	183	0.98
1111111111111111	Graco #1	02/14/19 09:35:00	151	160	139	---	---	---	986	1,048	---	559,836	90,966	85	88	90	161	0.98
1111111111111111	Graco #1	02/14/19 09:36:00	151	160	141	---	---	---	1,006	1,065	---	559,854	90,984	86	88	89	172	0.98
1111111111111111	Graco #1	02/14/19 09:37:00	151	160	140	---	---	---	999	1,056	---	559,872	91,002	86	88	92	176	0.98
1111111111111111	Graco #1	02/14/19 09:38:00	151	160	139	---	---	---	1,003	1,058	---	559,892	91,022	86	88	88	178	0.98
1111111111111111	Graco #1	02/14/19 09:39:00	151	160	140	---	---	---	992	1,040	---	559,910	91,040	86	89	92	179	0.98
1111111111111111	Graco #1	02/14/19 09:40:00	150	160	140	---	---	---	990	1,046	---	559,929	91,060	86	89	92	178	0.98
1111111111111111	Graco #1	02/14/19 09:41:00	151	160	141	---	---	---	993	1,046	---	559,952	91,082	86	89	90	174	0.99

Report Notes:

- The report generates an Excel file of all Reactor data for each minute over a selected data range.
The report generates a large data file, so report is limited to just one Reactor.
 - Ex: Data is useful when doing investigation of a particular job or machine to determine detailed temperature, pressure and ratio parameters. Data is also useful when troubleshooting an issue with a machine.
- Choose the Reactor to include in the report
- Choose the date range for the report

SAMPLE DATA