

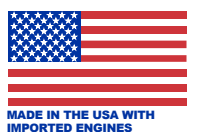


# GH™ BIG RIG™ SPRAYERS

Large Gas Hydraulic Sprayers



PROVEN QUALITY. LEADING TECHNOLOGY.



# THERE IS NOTHING LIKE A GRACO BIG RIG SPRAYER

Graco Big Rig airless sprayers provide the highest pressure and flow for the heaviest materials. These powerful sprayers are recognized as solid, reliable investments that will keep you spraying and save you money to move your business forward.

## TRUST YOUR BUSINESS AND REPUTATION TO GRACO

Graco is committed to providing the highest quality Big Rig airless sprayers available, backed by the industry's best warranty.

## AMERICAN BUILT QUALITY SINCE 1926

100% factory-tested and field-proven Graco professional gas airless sprayers are designed, manufactured, and assembled in the USA.

## INDUSTRY-LEADING WARRANTY

Behind every Graco sprayer is the industry's strongest warranty. You may never use Graco's warranty — but if you do, we will be there.



## GRACO-ONLY SOLUTIONS THAT KEEP YOU SPRAYING



PATENT PENDING

### THE LONGEST LASTING PUMPS EVER BUILT

- Longest life in the industry with Vortex™ rotating piston rod
- 6X more gallons sprayed between repacks
- Extends pump rod life by 3X — delivering the industry's lowest cost of ownership



### LEGENDARY PERFORMANCE

#### Heavy-Duty Graco Hydraulic System

- Faster, more responsive changeover
- O-ring sealed to eliminate leaks
- High-precision pressure control
- No hydraulic reset button needed
- Durable hydraulic lines for long life



### REDUCED DOWNTIME

#### High-Capacity Cooling System

- Innovative design allows the pump to run cooler and more efficiently
- Easier and more thorough fluid changes
- Reservoir cooling fins deflect more heat
- No special hydraulic fluid needed



### RELIABLE, POWERFUL AND EASY-TO-START

#### Proven Engines

- Honda® GX Engine
- Briggs and Stratton Vanguard® Engine



### MAXIMIZE PRODUCTION

#### QuikChange™ Pump Lowers

- Easily customize your Big Rig for each coating
- No need to purchase additional rigs
- Exclusively on Graco Xtreme™ pumps



### WORK SMARTER AND FASTER

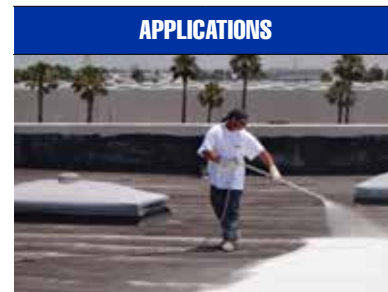
#### Proven Big Rig Accessories

- Heavy-Duty 18" JetRoller™ System: one step spray and back roll
- 25 gallon Material Hopper: spend more time spraying and less time refilling
- Many more time saving accessories



# BIG RIG MATERIAL AND APPLICATION GUIDE

When you need maximum performance, versatility, durability, and time-saving accessories, look no further than Graco's line of Big Rig Large Gas Hydraulic Sprayers. Whether you are applying roof coatings, waterproofing, fireproofing, protective, or architectural coating, count on Graco Big Rig Sprayers to get the job done—FAST!



APPLICATIONS



APPLICATIONS

EQUIPMENT	PRESSURE (PSI)	FLOW (GPM)	QUICKCHANGE PUMP	COMPLEMENTARY UNIT FOR SMALL JOBS	APPLICATIONS		APPLICATIONS									
					COOL ROOF	SILICONE	ELASTOMERIC	MONOFORM	EMULSION	INTUMESCENT	PAINTS AND PRIMERS	PROTECTIVE	PROTECTIVE HIGH SOLIDS			
GH 933 Hi Flo	7250	2.5	+	DutyMax GH 675DI	●	●	●		●	●						●
GH 933	7250	2.5	+	DutyMax GH 675DI	●		●		●	●		●	●	●		●
DutyMax™ GH 675DI	6750	1.5	+		●	●	●		●	●		●	●	●		●
GH 5040	5000	3.5	+	DutyMax GH 675DI	●		●		●	●		●	●	●		
GH 833	4000	4.0	-	GMAX 7900 Roof Rig	●		●		●	●		●	●	●		
GH 733	4000	4.0	+	GMAX 7900 Roof Rig	●		●		●	●		●	●	●		
GMAX® 7900 RR	3300	2.2	-		●		●		●	●		●	●	●		
GH 2570	2500	7.0	+	GMAX 7900 Roof Rig	●			●		●		●	●	●		
GH 1017	1000	16.5	+					●		●						

**KEY APPLICATION ACCESSORIES**

<p><b>Direct Immersion Kit</b> 287843 – GH 733, GH 833, GH 933, GH 5040 16U764 – GH 2570</p> <p><b>Hopper Kits</b> 25 Gallon Plastic – 25D078 GH 933, GH 5040, GH 733, DutyMax GH 675DI 12 Gallon SST – 16U505 GH 933, GH 5040, GH 733</p> <p><b>Big 150 and 250 Kits</b> See page 11 for PNs and details</p> <p><b>Mastic Gun w/36" Extension 5000 psi</b> 224472</p> <p><b>Heavy-Duty 18" JetRoller</b> 25D229</p>	<p><b>5:1 Monark® Feed Pump Kit</b> 24A423 – GH 933</p> <p><b>Hopper Kits</b> 25 Gallon Plastic – 25D078 GH933, GH 5040, GH 733, DutyMax GH 675DI</p> <p><b>Big 150 and 250 Kits</b> See page 11 for PNs and details</p> <p><b>Heavy-Duty 18" JetRoller</b> 25D229</p>
--	--

<p><b>5:1 Monark Feed Pump Kit</b> 24A423 – GH 933</p> <p><b>Direct Immersion Kit</b> 287843 – GH 733, GH 833, GH 933, GH 5040 16U764 – GH 2570</p> <p><b>Hopper Kits</b> 25 Gallon Plastic – 25D078 GH933, GH 5040, GH 733, DutyMax GH 675DI 12 Gallon SST – 16U505 GH 933, GH 5040, GH 733</p> <p><b>Big 150 and 250 Kits</b> See page 11 for PNs and details</p> <p><b>Heavy-Duty 18" JetRoller</b> 25D229</p>	<p><b>Direct Immersion Kit</b> 287843 – GH 733, GH 833, GH 933, GH 5040 16U764 – GH 2570</p> <p><b>Hopper Kits</b> 25 Gallon Plastic – 25D078 GH933, GH 5040, GH 733, DutyMax GH 675DI 12 Gallon SST – 16U505 GH 933, GH 5040, GH 733</p> <p><b>Big 150 and 250 Kits</b> See page 11 for PNs and details</p> <p><b>Heavy-Duty 18" JetRoller</b> 25D229</p>	<p><b>5:1 Monark Feed Pump Kit</b> 24A423 – GH 933</p> <p><b>Hopper Kits</b> 25 Gallon Plastic – 25D078 GH933, GH 5040, GH 733, DutyMax GH 675DI 12 Gallon SST – 16U505 GH 933, GH 5040, GH 733</p> <p><b>Big 150 and 250 Kits</b> See page 11 for PNs and details</p>	<p><b>Direct Immersion Kit</b> 287843 – GH 733, GH 833, GH 933, GH 5040 16U764 – GH 2570</p> <p><b>Hopper Kits</b> 25 Gallon Plastic – 25D078 GH933, GH 5040, GH 733, DutyMax GH 675DI 12 Gallon SST – 16U505 GH 933, GH 5040, GH 733</p>	<p><b>Hopper Kit</b> 12 Gallon SST – 16U505 GH 933, GH 5040, GH 733</p>	<p><b>Hopper Kit</b> 12 Gallon SST – 16U505 GH 933, GH 5040, GH 733</p>
---	--	--	---	---	---

# GMAX II 7900 IRONMAN ROOF RIG SPRAYER

The GMAX II 7900 IronMan Roof Rig is the industry-standard for professional contractors who spray a full range of coatings on residential, commercial, and industrial jobs. Powered by a Honda engine, this portable rig will go anywhere the job demands.



### THE LONGEST LIFE EVER

#### New Endurance Vortex MaxLife Extreme™ Piston Pump

Breakthrough Vortex Rotating Rod Technology Keeps You Spraying:

- Oversized passages for high-velocity flow to rotate rod for even wear
- 6X more gallons sprayed between repacks. Extreme rod extends pump rod life by 3X
- Graco exclusive abrasion-resistance composite delivers the most durable wear surface
- Repack pump in minutes with new QuikPak™ cartridge repair system



### ELIMINATE COSTLY DOWNTIME

#### ProConnect™ Pump Replacement System

- Exchange pump in minutes—pinless design needs no tools



### NEVER HAVE A FLAT AGAIN

#### Flat Proof Tires

- No tire puncturing from nails, screws, or any sharp debris



### DURABLE FILTRATION

#### Crushproof Inlet Strainer

- Stands up to harsh impacts to maintain filtering and flow

### CONSISTENT SPRAY FAN AND PRESSURE CONTROL

#### SmartControl™ 3.0

- Lowest dead band at any pressure
- Ideal for low overspray applications

### PUMP DAMAGE PROTECTION

#### WatchDog™ Pump Protection System

- Automatically shuts down the pump when paint runs out or if the hose is damaged

### THE LONGEST LASTING DRIVE

#### Advantage Drive™

- Hardened steel gears provide extremely quiet operation
- Contractor preferred

### EASY MAINTENANCE AND LESS CLOGGING

#### Easy Out™ Pump Filter

- Exclusive inside-out filtering process ensures a quality finish and less mess



# GH 833 BIG RIG SPRAYER

The GH 833 is the preferred choice for high production professional contractors who spray the wide range of materials. This jobsite-proven workhorse is the answer when you demand ruggedness, performance, and value.



Honda GX Engine



Briggs and Stratton Vanguard Engine



### RELIABLE, ELECTRIC START ENGINE†

#### (†ES Models only)

- Choose from Briggs and Stratton Vanguard CARB approved engine, or Honda
- Backup pull start
- High-capacity, 12 V Charging System†

### HEAVY-DUTY GRACO HYDRAULIC SYSTEM

- Faster, more responsive changeover
- O-ring sealed to eliminate leaks
- High-precision pressure control
- No hydraulic reset button needed
- Durable hydraulic lines for long life

### FLOW-THROUGH FILTER SYSTEM

- Inside/out design eliminates clogged filters
- Eliminates tip clogs

### HEAVY-DUTY FRAME

- Easy-roll tubed pneumatic tires
- Enamel painted steel tubing—corrosion protection
- Multifunction design converts to skid mount in seconds

### EXCLUSIVE MAXLIFE® ENDURANCE™ PUMP

- Proven design and performance
- Only 16 cycles per gallon
- Exclusive MaxLife rod and sleeve delivers unmatched durability and life
- Exclusive QuikChange Pump System and QuikAccess™ Intake Valve eliminates downtime

### HEAVY-DUTY COOLING SYSTEM

- Large 4 gallon hydraulic reservoir
- Return line hydraulic filter extends life
- No special hydraulic fluid needed
- Proven cooler and blower system
- Easy-to-use drain plug



Direct Immersion Kit allows ultimate flexibility with tough-to-spray materials. (Part #287843)



ROOF RIG SPRAYER	PART #
GMAX II 7900 IronMan Roof Rig	17E835*

ROOF RIG SPRAYERS	HONDA PART #	VANGUARD PART #
GH 833 Bare	249318	249318V*
GH 833 Complete	249617	249617V*
GH 833ES Bare Electric Start	16U287	16U287V*
GH 833ES Complete Electric Start	16U288	16U288V*
GH 833 OEM	249767	249767V*

\*CARB APPROVED

# DUTYMAX GH 675DI

## MAXIMUM POWER AND PERFORMANCE

The DutyMax GH 675DI is the preferred choice for high production professional contractors who handle hard-to-atomize materials such as silicone and other waterproofing and protective coating materials. This compact sprayer includes the ultimate portability anywhere the job demands.

### SMALL SIZE, ULTIMATE PORTABILITY

- Maximum pressure of 6750 psi and flow rates up to 1.5 gpm to tackle the toughest coatings
- Cleanup is simple and economical using less solvent than larger systems
- Significantly faster than manual rolling or squeegee applications
- Spraying delivers more consistent mil build over the entire surface
- Converts to 3300 psi/3 gpm pump with optional kit: spray both silicone and acrylics — like having 2 sprayers in 1
- Removable engine for ultimate versatility when moving



### THE PERFECT SMALL JOB AND CUT-IN SOLUTION!



The ideal complement to your larger rigs on the big jobs for cut-in and detail work.



Ready to spray: complete with XTR-7 HF Gun w/ Swivel, XHD 523, 527, 531 Tip and Guard, 3/8 in x 10 ft Xtreme Duty Whip Hose, in addition to the items listed below.

ROOF RIG SPRAYERS	ALSO INCLUDES	HONDA PART #	VANGUARD PART #
DutyMax GH 675DI Complete	1/2 in x 50 ft Xtreme Duty Hose	25D223	25D223V*
DutyMax GH 675DI Big 150	(3) 1/2 in x 50 ft Xtreme Duty Hose, 18 in Tip Extension, 180 degree Tip Swivel, all fittings	25D225	25D225V*
DutyMax GH 675DI Big 150 w/ Hopper	(3) 1/2 in x 50 ft Xtreme Duty Hose, 18 in Tip Extension, 180 degree Tip Swivel, all fittings, 25 Gallon Material Hopper with Couplings	25D226	25D226V*

\*CARB APPROVED



## WORK SMARTER AND FASTER WITH GREAT ACCESSORIES



### WINDY CONDITIONS? NO PROBLEM WITH THE NEW HEAVY DUTY 18" JETROLLER\*

Introducing the all new Heavy Duty 18" JetRoller. Designed specifically for the most severe jobsite conditions, this innovative spray roller offers low overspray and a wide coverage area. Perfect for horizontal surfaces, this accessory gives you the power to spray, even in moderate crosswinds, with virtually no overspray. Now you can get the benefit of spraying and backrolling all in one step, with one person.

### REFILL LESS WITH 25 GALLON HOPPER\*

Eliminate wasted time refilling with the new 25 gallon hopper. This time-saving hopper features a lid, wheels, heavy-duty frame, and flexible connection to the sprayer to allow easy maneuvering around jobsite while still connected. Included plugs allow disassembly with less mess.



Spend more time spraying and less time managing refills with the 25 Gallon Hopper.

\*See page 12 for more information.

ACCESSORIES	PART #
Heavy-Duty 18 in JetRoller	25D229
25 Gallon Hopper	25D078

# BIG RIG SPRAYERS

## GH 733/GH 933/GH 1017/GH 2570/GH 5040

For over 30 years, contractors have turned to the GH line of gas hydraulic sprayers when they needed maximum performance and unmatched versatility. Whether you require high pressure for long hose runs and hard-to-atomize materials, or high flow rates for heavier coverage, turn to the GH Big Rig sprayers to get the job done!



Honda GX Engine



Briggs and Stratton Vanguard Engine

### RELIABLE, ELECTRIC START ENGINE†

(†ES Models only)

- Choose from Briggs and Stratton Vanguard CARB approved engine, or Honda
- Backup pull start
- High-capacity, 12 V Charging System†

### RUGGED, HEAVY-DUTY STEEL FRAME

- Welded, heavy-gauge steel construction
- Integrated, fully balanced lift points
- Easy-roll tubed pneumatic tires
- Enamel painted steel tubing—corrosion protection
- Multifunction design converts to skid mount in seconds—easily converts to secure skid mount by moving handle to lower frame holes

### EXCLUSIVE XTREME PUMP

- QuikChange pump section
- Time-tested durability and performance
- Long-life XtremeSeal™ and leather packings
- Heavy-duty piston rod for long life
- QuikAccess intake valve removes easily for fast repairs

### HEAVY-DUTY GRACO HYDRAULIC SYSTEM

- Faster, more responsive changeover
- O-ring sealed to eliminate leaks
- High-precision pressure control
- No hydraulic reset button needed
- Durable hydraulic lines for long life

### HEAVY-DUTY COOLING SYSTEM

- Large 4 gallon hydraulic reservoir
- Return line hydraulic filter extends life
- No special hydraulic fluid needed
- Proven cooler and blower system
- Easy-to-use drain plug

### ADDITIONAL FEATURES

- Lockable pressure control knob
- Grounding wire for safety with solvent materials
- Large diameter siphon hose



		GMAX II 7900 RR	DUTYMAX GH 6750 <sup>DI</sup> *	GH 733	GH 833	GH 933	GH 1017	GH 2570	GH 5040
APPLICATIONS	Latex Paints	●	●	●	●	●		●	●
	Primers	●	●	●	●	●		●	●
	Block Fillers	●	●	●	●	●		●	●
	Enamel	●	●	●	●	●		●	●
	Elastomerics	●	●	●	●	●		●	●
	Acrylic: Water/Solvent	●	●	●	●	●	●	●	●
	Epoxy: Finishes/Mastics	●	●	●	●	●	●	●	●
	Polyester	●	●	●	●	●	●	●	●
	Coal Tar	●	●	●	●	●	●	●	●
	Polyurethane	●	●	●	●	●	●	●	●
	Asphalt Emulsion: Fibered/Non-fibered		●	●	●	●	●	●	●
	Mastics - Adhesive Type		●	●	●	●			●
	Waterproofing/Above and Below Grade		●	●	●	●			●
	Contract Cement		●	●	●	●			●
	Asphalt Cut-back: Fibered/Non-fibered						●	●	●
	Texture: Smooth and Fine		●	●	●	●			●
	Burmastics		●		●	●			●
Monoform						●	●		
Aluminum Emulsion: Fibered/Non-fibered	●	●	●	●	●	●	●	●	
Elastomeric Acrylic	●	●	●	●	●			●	
Emulsion Primer	●	●	●	●	●	●	●	●	
Silicone		●				●		●	
Intumescent		●				●		●	

Note: Materials and temperatures may dictate the hose length you can use. Fibered materials not recommended.



### GH933

The choice for Protective and Intumescent Coatings

Complete Sprayer Includes:

- XTR 704 Gun
- XHD™ 519 SwitchTip™ and Guard
- 3/8 in x 50 ft (9.5 mm x 15 m) Xtreme-Duty Airless Hose
- 1/4 in x 6 ft (6.4 mm x 1.8 m) Xtreme-Duty Whip Hose



### GH933ES HI-FLO

Optimized for Silicone and other Heavy Bodied Materials

Equipped with Graco's proven Xtreme pump lower with durable Tuff-Stack™ packings, this pump features oversized outlets and a filterless design for maximum flow and performance.

Complete Sprayer Includes:

- XHF Gun
- XHD 429 SwitchTip™ and Guard
- 3/8 in x 50 ft (9.5 mm x 15 m) Xtreme-Duty Airless Hose
- 1/4 in x 6 ft (6.4 mm x 1.8 m) Xtreme-Duty Whip Hose

	Architectural
	Protective
	Roofing, Waterproofing, Fireproofing

RIG SPRAYERS	HONDA PART #	VANGUARD PART #
GH 733ES Bare Electric Start	16U279	16U279V*
GH 1017ES Bare Electric Start	16U277	16U277V*
GH 2570ES Bare Electric Start	16U278	16U278V*
GH 5040ES Bare Electric Start	16U280	16U280V*

BIG RIG SPRAYERS	HONDA PART #	VANGUARD PART #
GH 933 Bare	16U281	16U281V*
GH 933 Complete	16U282	16U282V*
GH 933 Bare Electric Start	16U285	16U285V*
GH 933ES Complete Electric Start	16U286	16U286V*
GH 933ES Hi Flo Bare	17B484	17B484V*
GH 933ES Hi Flo Complete	17B485	17B485V*

\*CARB APPROVED

# ROOF RIGS

## READY-TO-SPRAY BIG 150 AND BIG 250 SYSTEMS

Decide which system fits your application needs with these 11 ready-to-spray systems from Graco. Configured with 150 or 250 feet of pressure-rated hose, gun, tip extensions, and all the fittings you will need, these systems offer ultimate convenience and value. Whether you require high-pressure, maximum flow, electric start, or even the ability to swap pumps with available QuikChange lowers, we have a system for you!



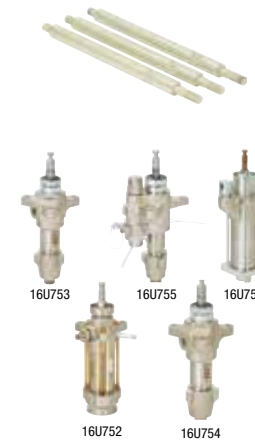
### READY-TO-SPRAY SYSTEMS

PART #	DESCRIPTION	INCLUDES
Honda 25D225 Vanguard 25D225V*	DutyMax GH 675DI Big 150 System	DutyMax GH 675DI, 150 ft of Xtreme-Duty 1/2 in Hose, 10 ft x 3/8 in Xtreme-Duty Whip Hose, XTR-7 HF Gun, 18 in Tip Extension, 180 degree Tip Swivel, XHD 527 & 531 Tips, and all fittings
Honda 25D226 Vanguard 25D226V*	DutyMax GH 675DI Big 150 with 25 Gallon Material Hopper	DutyMax GH 675DI, 25 Gallon Material Hopper and Couplings, 150 ft of Xtreme-Duty 1/2 in Hose, 10 ft x 3/8 in Xtreme-Duty Whip Hose, XTR-7 HF Gun, 18 in Tip Extension, 180 degree Tip Swivel, XHD 527 & 531 Tips, and all fittings
Honda 16U776 Vanguard 16U776V*	GH 2570es Big 250 System	GH 2570es with Electric Start, 250 ft of 1/2 in Hose, 10 ft x 3/8 in Whip Hose, Gun Swivel, Heavy-Duty Gun, 30 in Tip Extension, 180 degree Tip Swivel, RAC X™ 519, 531 Tips, and all fittings
Honda 16U778 Vanguard 16U778V*	GH 733es Big 250 System	GH 733es with Electric Start, 250 ft of 1/2 in Hose, 10 ft x 3/8 in Whip Hose, Gun Swivel, Heavy-Duty Gun, 30 in Tip Extension, 180 degree Tip Swivel, RAC X 519, 531 Tips, and all fittings
Honda 16U780 Vanguard 16U780V*	GH 833 Big 250 System	GH 833, 250 ft of 1/2 in Hose, 10 ft x 3/8 in Whip Hose, Gun Swivel, Heavy-Duty Gun, 30 in Tip Extension, 180 degree Tip Swivel, RAC X 519, 531 Tips, and all fittings
Honda 16U781 Vanguard 16U781V*	GH 833es Big 250 System	GH 833es with Electric Start, 250 ft of 1/2 in Hose, 10 ft x 3/8 in Whip Hose, Gun Swivel, Heavy-Duty Gun, 30 in Tip Extension, 180 degree Tip Swivel, RAC X 519, 531 Tips, and all fittings
Honda 16U782 Vanguard 16U782V*	GH 5040es Big 250 System	GH 5040es with Electric Start, 250 ft of 1/2 in Hose, 10 ft x 3/8 in Whip Hose, Gun Swivel, Flex Plus™ Gun, 18 in Tip Extension, 180 degree Tip Swivel, RAC X 517, 531 Tips, and all fittings
Honda 16U783 Vanguard 16U783V*	GH 933 Big 250 System	GH 933, 200 ft of 3/4 in Hose, 50 ft of 1/2 in Hose, 10 ft x 3/8 in Whip Hose, XTR-7 Gun, 18 in Tip Extension, 180 degree Tip Swivel, XHD 519, 531 Tips, and all fittings
Honda 16U784 Vanguard 16U784V*	GH 933es Big 250 System	GH 933es with Electric Start, 200 ft of 3/4 in Hose, 50 ft of 1/2 in Hose, 10 ft x 3/8 in Whip Hose, XTR-7 Gun, 18 in Tip Extension, 180 degree Tip Swivel, XHD 519, 531 Tips, and all fittings
Honda 17B488 Vanguard 17B488V*	GH 933es Hi Flo Big 250 System	GH 933es with Electric Start, 50 ft of 3/4 in Xtreme-Duty Hose, 200 ft of 1/2 in Xtreme-Duty Hose, 10 ft x 3/8 in Xtreme-Duty Whip Hose, XHF Gun, 18 in Tip Extension, 180 degree Tip Swivel, XHD 429, 531 Tips, and all fittings
Honda 25M283 Vanguard 25M283V*	GH 933es Hi Flo Big 250 System with 5:1 Monark® System	GH933es with Electric Start, 5:1 Monark Feed Pump, 200 ft of 3/4 in Xtreme-Duty Hose, 50 ft of 1/2 in Xtreme-Duty Hose, 10 ft x 3/8 in Xtreme-Duty Whip Hose, XHF Gun, 18 in Tip Extension, 180 degree Tip Swivel, XHD 429, 531 Tips, and all fittings

\*CARB APPROVED

## QUIKCHANGE PUMP LOWERS

Exclusive QuikChange Pump Lower maximize production. Easily customize your Big Rig for each coating, without purchasing additional rigs! Each QuikChange Pump Lower Kit is sold separately. Big Rig Pump Lower Kits include Pump Lower, Tie Rods, and Rod Connector. Fits GH 733, GH 933, GH 1017, GH 2570, GH 5040 units only.



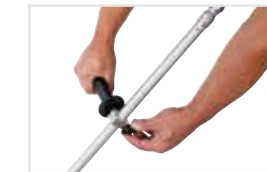
PART #	DESCRIPTION
16U753	GH 733 Pump Lower Kit
16U755	GH 933 Pump Lower Kit
17B489	GH 933 Hi Flo Pump Lower Kit
16U751	GH 1017 Pump Lower Kit
16U752	GH 2570 Pump Lower Kit
16U754	GH 5040 Pump Lower Kit



## HEAVY-DUTY 18" JETROLLER



Remove roller and it becomes a 42" spray wand!



Fully adjustable handle for ultimate comfort

### One-Step Spray and Back Roll With Less Overspray Than Conventional Airless Spray!

- Combines the speed of spray with the simplicity of rolling
- Fits 9-18" standard roller covers
- Pressure rated to 7250 psi
- Perfect for windy areas

### Heavy-Duty Construction

- All-aluminum construction withstands jobsite abuse
- Toolless components adjust for maximum comfort

PART #	DESCRIPTION
25D229	Heavy-Duty 18 in JetRoller

## 25 GALLON MATERIAL HOPPER



Fits GH 733, GH 5040, GH 933, and GH 675DI



### Boost Productivity by Minimizing Refills

- Features no-tools connections
- Large, 25 gallon capacity
- Lid protects material and keeps debris out
- Long-length flexible coupling tube allows easy maneuvering without disconnecting

### Heavy-Duty Construction

- Welded steel frame withstands jobsite abuse
- Durable polyethylene hopper allows easy cleanup and accepts standard 55 gallon garbage bag for an inexpensive liner

PART #	DESCRIPTION
25D078	25 Gallon Material Hopper



**HEAVY-DUTY, XHF, AND MASTIC GUNS**

PART #	DESCRIPTION
241705	Heavy-Duty Gun with RAC X 531 Tip and Guard, 4000 psi (276 bar)
224472	Mastic Gun 36 in (.9 m) Extension, 5000 psi (345 bar)
237260	Repair Kit – Heavy-Duty Gun
262854	XHF Gun, includes XHD 429 Tip



**XTR GUNS**

**XTR-5™ Airless Spray Gun, 5000 psi (345 bar, 34.5 MPa)**

PART #	DESCRIPTION
XTR500	1 In Round Handle, 4-Finger Trigger, no Tip
XTR501	1 In Round Handle, 4-Finger Trigger, 519 Flat Tip
XTR502	Oval-insulated Handle, 4-Finger Trigger, 519 XHD RAC
XTR503	Oval-insulated Handle, 2-Finger Trigger, 519 XHD RAC
XTR504	1 In Round Handle, 4-Finger Trigger, 519 XHD RAC
XTR505	1 In Round Handle, 2-Finger Trigger, 519 XHD RAC

**XTR-7 Airless Spray Gun, 7250 psi (500 bar, 50 MPa)**

PART #	DESCRIPTION
XTR700	Round Handle, 4-Finger Trigger, no Tip
XTR701	Round Handle, 4-Finger Trigger, 519 Flat Tip
XTR702	Oval-insulated Handle, 4-Finger Trigger, 519 XHD RAC Tip
XTR703	Oval-insulated Handle, 2-Finger Trigger, 519 XHD RAC Tip
XTR704	Round Handle, 4-Finger Trigger, 519 XHD RAC Tip
XTR705	Round Handle, 2-Finger Trigger, 519 XHD RAC Tip



**EXTENSIONS**

**Includes RAC X HandTite™ Guard Standard with 7/8 in (22 mm) Gun Nut and OneSeal™ Maximum Working Pressure: 4050 psi (280 bar, 28.0 MPa)**

PART #	DESCRIPTION
287019	10 inch (25 cm)
287020	15 inch (38 cm)
287021	20 inch (50 cm)
287022	30 inch (75 cm)
246294	10 in (254 mm) Gun Extension, 7250 psi (500 bar, 50 MPa)
246295	15 in (380 mm) Gun Extension, 7250 psi (500 bar, 50 MPa)
246296	18 in (457 mm) Gun Extension, 7250 psi (500 bar, 50 MPa)
17U148	42 in (107 cm) Gun Extension with Handle, 7250 psi (500 bar)



**SILVER PLUS AND FLEX PLUS GUNS**

PART #	DESCRIPTION
246240	Silver Plus Gun (2-finger) with RAC X 517 Tip and Guard 5000 psi max (345 bar)
243283	Silver Plus Gun (2-finger) with RAC® 5 517 Tip and Guard 5000 psi max (345 bar)
235460	Silver Plus Gun (2-finger) with Flat Tip and Guard 5000 psi max (345 bar)
235461	Silver Plus Gun (4-finger) with Flat Tip and Guard 5000 psi max (345 bar)
235462	Silver Plus Gun Fine Finish (2-finger) with Flat Tip and Guard 5000 psi max (345 bar)
246468	Flex Plus Gun (2-finger) with RAC X 517 Tip and Guard 5000 psi max (345 bar)
235474	Repair Kit (Silver Plus, Flex Plus)
273334	Silver Plus HP Gun 7250 psi (500 bar) (2-finger) with XHD 519 Tip and Guard
273335	Silver Plus HP Gun (7250 psi (500 bar) (4-finger) with XHD 519 Tip and Guard
20B225	Repair Kit (Silver Plus HP)

**XTR-7™ HF High Flow Airless Spray Gun, 7250 psi (500 bar)**

PART #	DESCRIPTION
17V677	Filterless, Oval-insulated Handle, 4-Finger Trigger, XHD 523, and 531 Tips

**Xtreme-Duty High Pressure Gun Accessories, (Fit both XTR-5 and XTR-7 Spray Guns)**

PART #	DESCRIPTION
246294	10 in (254 mm) Gun Extension, 7250 psi (500 bar, 50 MPa)
246295	15 in (380 mm) Gun Extension, 7250 psi (500 bar, 50 MPa)
246296	18 in (457 mm) Gun Extension, 7250 psi (500 bar, 50 MPa)
246297	180° Spray Nozzle, 7/8-14 UNC-2B, 7250 psi (500 bar, 50 MPa)
248837	Gun Repair Kit (includes Gasket, Needle, and Seat)
287449	4-Finger Round Trigger Kit
287450	2-Finger Trigger Kit
287451	4-Finger Oval Insulation Trigger Kit
287032	Filter, 60 mesh
287033	Filter, 100 mesh
287034	Filter, 60 and 100 mesh combination
247634	Seal Kit, GHD Conversion (5-pack)



**GUN SWIVEL**

PART #	DESCRIPTION
189018	Gun Swivel rated to 7500 psi



**SPRAY NOZZLE**

PART #	DESCRIPTION
246297	180° Spray Nozzle, 7/8-14 UNC-2B, 7250 psi (500 bar, 50 MPa)



**RAC X TIPS AND GUARDS**

PART #	DESCRIPTION
LTX-XXX	RAC X SwitchTips, Blue (Odd #); Maximum Working Pressure: 4050 psi (279 bar, 27.9 MPa)
WR-XXXX	RAC X Wide RAC™ SwitchTips, Blue (Odd #); Maximum Working Pressure: 4050 psi (279 bar, 27.9 MPa)
246215	RAC X HandTite Guard; 7/8 in (22 mm) thread size, standard Graco thread
246437	RAC X HandTite Guard; 11/16 in (17 mm) thread size, older style Graco pole guns, fits competitive guns with 11/16 in (17 mm) threads
286-XXX	RAC 5 SwitchTips, Black (Odd #); Maximum Working Pressure: 4050 psi (279 bar, 27.9 MPa)
243161	RAC 5 HandTite Guard; 7/8 in (22 mm) thread size, standard Graco thread
243263	RAC 5 HandTite Guard; 11/16 in (17 mm) thread size, older style Graco pole guns, fits competitive guns with 11/16 in (17 mm) threads

**XTREME-DUTY HIGH PRESSURE WHIP HOSE**

**Maximum Working Pressure: 4000 psi (276 bar)**

PART #	DESCRIPTION
277249	1/4 in x 3 ft (6.4 mm x 0.9 m) MxF Whip Hose
277250	1/4 in x 50 ft (6.4 mm x 15 m) FBE
277351	3/8 in x 3 ft (9.5 mm x 0.9 m) MxF Whip Hose
277251	3/8 in x 50 ft (9.5 mm x 15 m) FBE
277253	1/2 in x 50 ft (13 mm x 15 m) FBE



**XHD TIPS AND GUARDS**

PART #	DESCRIPTION
XHD-XXX	XHD SwitchTips, Gray (Odd #); Maximum Working Pressure: 7250 psi (500 bar, 50.0 MPa)
XHD001	XHD RAC Guard; Maximum Working Pressure: 7250 psi (500 bar, 50.0 MPa)
XHD010	Seal and Seal Kit (5-pack)

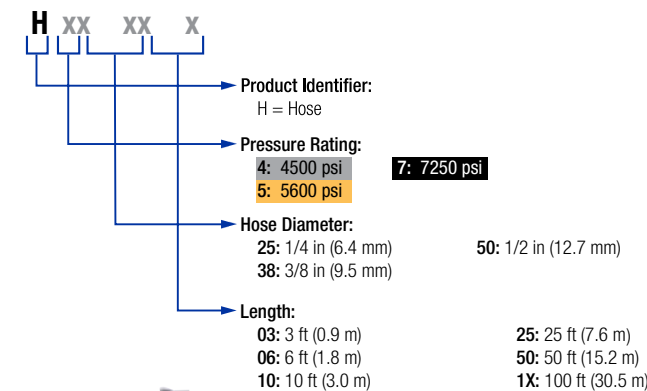


**BLUE MAX™ II AIRLESS HOSE**

PART #	DESCRIPTION
238358	3/16 in x 3 ft (4.8 mm x 0.9 m) 3300 psi (227 bar) Blue Max II Airless Whip Hose
238959	3/16 in x 4.5 ft (4.8 mm x 1.4 m) 3300 psi (227 bar) Blue Max II Airless Whip Hose
240793	1/4 in x 25 ft (6.4 mm x 7.5 m) 3300 psi (227 bar) Blue Max II Airless Hose
240794	1/4 in x 50 ft (6.4 mm x 15 m) 3300 psi (227 bar) Blue Max II Airless Hose
240797	3/8 in x 50 ft (9.5 mm x 15 m) 3300 psi (227 bar) Blue Max II Airless Hose

**XTREME-DUTY HIGH PRESSURE WHIP HOSE**

4500 psi    5600 psi    7250 psi



*Example: H53850 is a 5600 psi 3/8 in, 50 ft hose*

**CHOOSE THE RIGHT HOSE FOR THE JOB**

TECHNICAL SPECIFICATIONS	
Working Pressure	4500 psi (310 bar), 5600 psi (386 bar), or 7250 psi (500 bar)
Temperature Rating (all sizes)	-40° to 180°F (-40° to 82°C)
Chemical Resistance	Hose cover resistant to a wide variety of solvents, acids, and bases
Weather Resistance	Hose cover has outstanding resistance to oxygen, ozone, sunlight, and general weather conditions
Electrical Properties	Conductive hose

**3/4 IN XTREME-DUTY HIGH PRESSURE HOSE**

PART #	DESCRIPTION
H77550	3/4 in x 50 ft (6.4 mm x 15 m) FBE Xtreme-Duty High Pressure Hose; Maximum Working Pressure: 7250 psi (500 bar)





**GH 833 KITS**

PART #	DESCRIPTION
287843	Direct Immersion Kit; includes Hydraulic Feed Lines, Stinger Tube, and Lift Bracket
249767	OEM Kit; includes Hydraulic Engine/Head, Displacement Pump
287916	Non-Solvent Siphon Kit, 1.5 in diameter x 6.5 ft (2 m) Siphon Hose
287915	Solvent-resistant Siphon Kit, 1.5 in diameter x 6.5 ft (2 m) Siphon Hose



**HOPPERS AND FEED PUMPS**

PART #	DESCRIPTION
25D078	25 Gallon Material Hopper; Fits DutyMax GH 675DI, GH 733, GH 933, and GH 5040; includes Hopper, Lid, Coupling Hose, Elbow, Plugs, and Quick Disconnects
16U505	12 Gallon Stainless Steel Material Hopper Kit; includes Hopper, Lid, Mounting Bracket, Fittings, Quick Disconnect; Fits GH 733, GH 933, and GH 5040
25A423	5:1 Monark Feed Pump Kit Fits GH 933



**FLUIDS**

PART #	DESCRIPTION
243103	Pump Armor – 1 qt (1 L)
245133	Pump Armor – 1 gal (3.8 L); Use Graco's exclusive Pump Armor™ for long-term pump storage to prohibit harmful rust and corrosion to your sprayer
206994	Throat Seal Liquid (TSL™) – 8 oz (.24 L)
206995	Throat Seal Liquid (TSL) – 1 qt (1 L)
206996	Throat Seal Liquid (TSL) – 1 gal (3.8 L); Prolong the life of your pump by routinely adding TSL to your pump's wet cup
207428	Hydraulic Fluid – 1 gal (3.8 l)



**HOSE FITTINGS**

PART #	DESCRIPTION
17J816	3/4 in npt x 3/4 in npt (19 mm x 19 mm) – MBE; Maximum Working Pressure: 7250 psi (500 bar, 50 MPa)
156971	1/4 in npt x 1/4 in npt (6.4 mm x 6.4 mm) – MBE; Maximum Working Pressure: 7500 psi (517 bar, 51.7 MPa)
156849	3/8 in npt x 3/8 in npt (9.5 mm x 9.5 mm) – MBE; Maximum Working Pressure: 7250 psi (500 bar, 50 MPa)
158491	1/2 in npt x 1/2 in npt (13 mm x 13 mm) – MBE; Maximum Working Pressure: 7250 psi (500 bar, 50 MPa)
157350	1/4 in npt x 3/8 in npt (6.4 mm x 9.5 mm) – MBE; Maximum Working Pressure: 6000 psi (420 bar, 29 MPa)
159239	1/2 in npt x 3/8 in npt (13 mm x 9.5 mm) – MBE; Maximum Working Pressure: 7250 psi (500 bar, 50 MPa)



**GH 733, GH 933, GH 2570, GH 5040 KITS**

PART #	DESCRIPTION
287843	Direct Immersion Kit; includes Hydraulic Feed Lines, Stinger Tube and Lift Bracket; Fits GH 733, GH 833, GH 933, and GH 5040
16U764	Direct Immersion Kit; includes Hydraulic Feed Lines, Stinger Tube, and Lift Bracket; Fits GH 2570
287936	Non-solvent Siphon Kit, 2 in diameter x 6.5 ft (2 m) Siphon Hose
17B825	GH 933 Hi Flo Big 250 Gun and Hose Kit with XHF™ Gun
16U757	GH 733/GH 833 Big 250 Gun and Hose Kit with Heavy-Duty Gun



**XTREME QUICKCHANGE LOWER KITS**

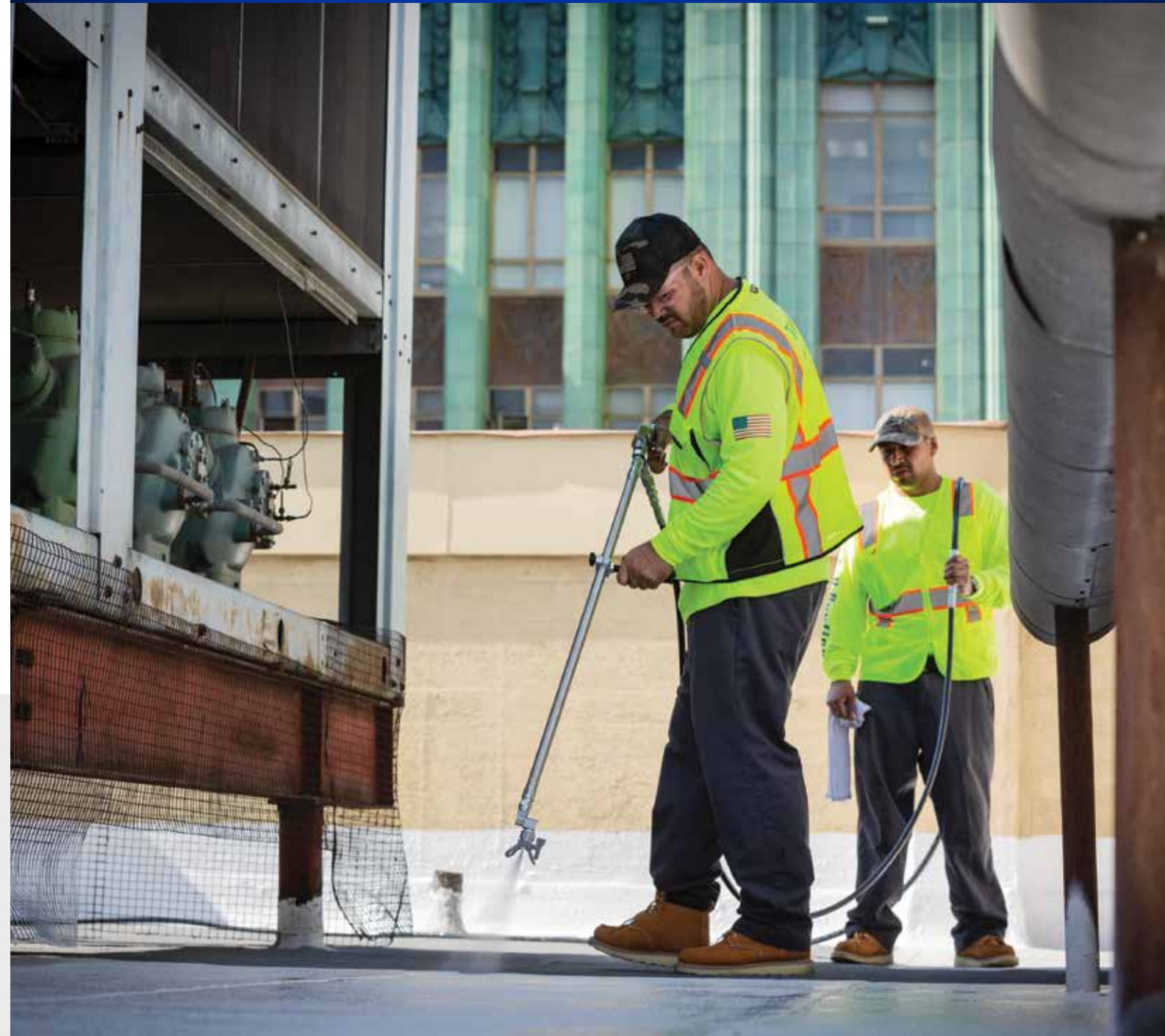
Includes pump lower and three (3) tie rods; fits GH 733, GH 933, GH 1017, GH 2570, GH 5040

PART #	DESCRIPTION
16U753	GH 733 Pump Lower
16U755	GH 933 Pump Lower
17B489	GH 933 Hi Flo Pump Lower
16U751	GH 1017 Pump Lower
16U752	GH 2570 Pump Lower
16U754	GH 5040 Pump Lower

**CONVERT DUTYMAX GH 675DI TO 3300 PSI— PERFECT FOR YOUR ACRYLIC JOBS**

DutyMax 3300 psi Lower Kit—17V188

- 3300 psi 3 gpm DI Endurance Lower
- HD Blue Texture Gun
- Prime Valve
- 1/2" x 50" Blue Max Hose
- 3/8" x 11' Blue Max Whip Hose
- 30" Tip Extension
- 180 degree Tip Swivel
- RAC X 529 and 535 Tips and Guard
- All fittings

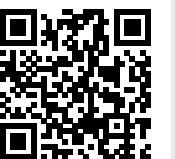




		GMAX II 7900 ROOF RIG	DUTYMAX GH 675DI	GH 733	GH 833
SPECIFICATIONS	MODEL*	Complete-17E835*	<b>Honda</b> Complete-25D223 Big 150-25D225 Big 150 with 25 Gallon Hopper -25D226  <b>Vanguard</b> Complete - 25D223V* Big 150 - 25D225V* Big 150 with 25 Gallon Hopper - 25D226V*	<b>Honda</b> Bare Electric Start - 16U279  <b>Vanguard</b> Bare electric Start - 16U279V*	<b>Honda</b> Bare-249318 Complete-249617 Bare Electric Start-16U287 Complete Electric Start-16U288 OEM Kit-249767  <b>Vanguard</b> Bare - 249318V* Complete - 249617V* Bare Electric Start - 16U287V* Complete Electric Start -16U288V*
	Maximum gpm (lpm)	2.2 (8.3)	1.5 (5.7)	4.0 (15.1)	4.0 (15.1)
	Maximum psi (bar)	3300 (227)	6750 (465)	4000 (276)	4000 (276)
	Maximum Tip Size	.048	.041	.065	.065
	Engine	200 cc Honda (6.5 HP)	270 cc Honda (9.0 HP)	390 cc Honda (13.0 HP) or 408 cc Vanguard (14 HP)	390 cc Honda (13.0 HP) or 408 cc Vanguard (14 HP)
	Electric Start	No	No	Yes	Available
Charging System (Electric Start only)	No	No	Honda = 18 Amp Vanguard = 20 Amp	Honda = 18 Amp Vanguard = 20 Amp	
INCLUDES	Hose	3/8 in x 50 ft (9.5 mm x 15 m) Blue Max II Airless	1/2 in x 50 ft (12.7 mm x 15 m) Xtreme Duty	N/A	3/8 in x 50 ft (9.5 mm x 15 m) Blue Max II Airless
	Whip Hose	1/4 in x 3 ft (6.4 mm x .9 m) Blue Max II Airless	3/8 in x 10 ft (9.5 mm x 3 m) Xtreme Duty	N/A	1/4 in x 3 ft (6.4 mm x .9 m) Blue Max II Airless
	Gun	Heavy-Duty Blue	XTR-7 HF High Flow	N/A	Silver Plus
	Tip	RAC X 427, 635	XHD 523, 527, 531	N/A	RAC X 517, 655
	Filter	Easy Out	No	No	Easy Out
	Pulsation Dampener	No	No	No	No
	Siphon Set	5.0 gal Direct Immersion	5.0 gal Direct Immersion	1.25 in ID Nylon - 55 gal	1.5 in ID PVC - 55 gal
	Other	18 in Tip Extension	N/A	N/A	N/A
PUMP	Interchangeable Lowers	No	Yes	Yes	No
	Pump Type	Endurance Vortex Maxlife Extreme with ProConnect 2	Endurance Piston Quick-Change	Xtreme Piston Quick-Change	Endurance MaxLife Piston Quick-Change
	Packing	V-Max™ Blue	V-Max Blue/Leather	XtremeSeal/Leather	V-Max Blue
	Piston Rod	MaxLife Extreme	Chromex™	Chromex	MaxLife
	Cylinder	MaxLife	Hard Chrome	Hard Chrome	MaxLife
	Tie Rod	N/A	N/A	Silver-16U336	N/A

	GH 933	GH 1017	GH 2570	GH 5040
	<b>Honda</b> Bare-16U281 Complete-16U282 Bare Electric Start-16U285 Complete Electric Start-16U286  <b>Vanguard</b> Bare - 16U281V* Complete - 16U282V* Bare Electric Start - 16U285V* Complete Electric Start -16U286V*	<b>Honda</b> Bare Electric Start-16U277  <b>Vanguard</b> Bare Electric Start - 16U277V*	<b>Honda</b> Bare Electric Start-16U278  <b>Vanguard</b> Bare Electric Start - 16U278V*	<b>Honda</b> Bare Electric Start-16U280  <b>Vanguard</b> Bare Electric Start - 16U280V*
	2.5 (9.5)	16.5 (62.5)	7.0 (26.5)	3.5 (13.2)
	7250 (500)	1000 (70)	2500 (172)	5000 (345)
	.053	N/A	N/A	.067
	390 cc Honda (13.0 HP) or 408 cc Vanguard (14 HP)	390 cc Honda (13.0 HP) or 408 cc Vanguard (14 HP)	390 cc Honda (13.0 HP) or 408 cc Vanguard (14 HP)	390 cc Honda (13.0 HP) or 408 cc Vanguard (14 HP)
	Available	Yes	Yes	Yes
	Honda = 18 Amp Vanguard = 20 Amp	Honda = 18 Amp Vanguard = 20 Amp	Honda = 18 Amp Vanguard = 20 Amp	Honda = 18 Amp Vanguard = 20 Amp
	3/8 in x 50 ft (9.5 mm x 15 m) Xtreme-Duty Airless	N/A	N/A	N/A
	1/4 in x 6 ft (6.4 mm x 1.8 m) Xtreme-Duty Airless	N/A	N/A	N/A
	XTR-7 Airless XTR704	N/A	N/A	N/A
	519 XHD RAC	N/A	N/A	N/A
	Yes	No	No	No
	No	Yes	No	No
	1.0 in ID Nylon - 55 gal	2.0 in ID PVC - 55 gal	2.0 in ID PVC - 55 gal	2.0 in ID PVC - 55 gal
	N/A	N/A	N/A	N/A
	Yes	Yes	Yes	Yes
	Endurance Piston Quick-Change	Xtreme Piston Quick-Change	Xtreme Piston Quick-Change	Endurance Piston Quick-Change
	XtremeSeal/Leather	XtremeSeal/Leather	PTFE/Leather	XtremeSeal/Leather
	Chromex	Hard Chrome	Hard Chrome	Chromex
	Hard Chrome	Hard Chrome	Hard Chrome	Hard Chrome
	Silver-16U336	Silver-16U336	Gold-16U339	Silver-16U336

\*CARB APPROVED



graco.com/bigrigs



# SPRAY WITH CONFIDENCE

## Industry-Leading Warranty Protection

Every Graco Big Rig sprayer is backed by the industry's best warranty coverage.

### 3-YEAR ENGINE WARRANTY\*

If the engine fails from normal use, Honda or Briggs & Stratton will replace it under warranty for the original owner for 3 years.

### LIFETIME DRIVETRAIN WARRANTY\*

If the drivetrain fails from normal use, we'll replace it under warranty for the original owner for the life of the sprayer.

### 30-DAY "JUST ADD PAINT" REPLACEMENT GUARANTEE\*

Dissatisfied? Simply return the sprayer to the place you bought it within 30 days. They'll either exchange it for an identical sprayer or you can trade up to a larger sprayer at an additional cost.

### 3-YEAR WARRANTY\*

Coverage against defects in materials and workmanship on the entire sprayer.

### DOWNTIME ELIMINATOR PROGRAM\*

Part needed for a warranty repair not in stock at your distributor? Get FREE next business day air freight delivery when distributor orders the part by 2 p.m. CT.

### CONVENIENT SERVICE

Graco offers more than 5,500 authorized distributor locations in North America and over 700 locations to administer warranty repair.

\*NORTH AMERICA ONLY. See your local Graco Distributors for country specifics.  
\*See printed product warranty for complete warranty terms and conditions.



## Finish Every Job, Every Time

Downtime is costly. With the Endurance Advantage Program, you'll never need to worry about it again:

### Receive up to 70% OFF the list price of an Endurance Pump.

Follow the registration instructions included with your sprayer.



Every Graco purchase comes with A+ Customer Service.

Questions?  
Call (844) 241-9499

For more information visit [graco.com/contractor](http://graco.com/contractor)