



ProControl 1KE Plus

In-Line Fluid Monitoring and Control Packages



PROVEN QUALITY. LEADING TECHNOLOGY.

The **Affordable** Way to Control Fluids, Reduce Waste & **Improve Quality**

The ProControl 1KE Plus is an easy-to-use fluid monitoring and control package that accurately measures and regulates single component fluid and gun atomizing air, improving your finishing process.



Reliable Information and Control

Choose the ProControl 1KE Plus to manage your fluids and atomizing air. Built to save you time and money, ProControl 1KE Plus packages are backed by Graco's proven reliability standards.

Easy-to-Read Display

Navigate easily using icons and number based screen

PIN Protected Versatility

Lock system settings or limit adjustable ranges



Maintenance Alert

Alerts you when equipment needs service

Comprehensive Information

Tracks and monitors fluid pressure, flow rates, atomizing air, material usage
Includes job logs and event logs with date and time stamps

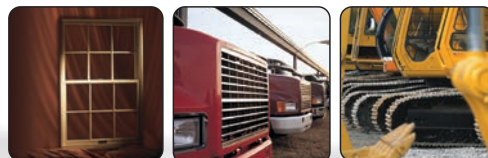
Optimize operation, material savings and reporting with unique modes for filling, flushing and dispensing

Key Applications

- Manual spray finishing
- Automatic spray finishing
- Solvent metering
- Single fluid dispensing

Key Industries

- Auto feeder
- Truck and bus
- Automotive
- Farm and construction
- Aerospace
- Wood



ProControl 1KE Plus

Manage Fluids for Better Spray Performance

Actively manage fluid pressure or flow rate and air pressure to lock in precise spray parameters. The ProControl 1KE Plus not only monitors fluids, its closed loop controls manage fluids and improve spray performance for manual and automatic applications.

Precise Control

Liquid Material

Prevent overspray and material waste by managing pressure or flow rate

Atomizing Air

Maintain a high quality finish by managing fan or atomizing air

Easy Adjustment

Pressure & Flow Rate

Manage the spray pressure or flow rate with true closed loop control for manual or automatic applications

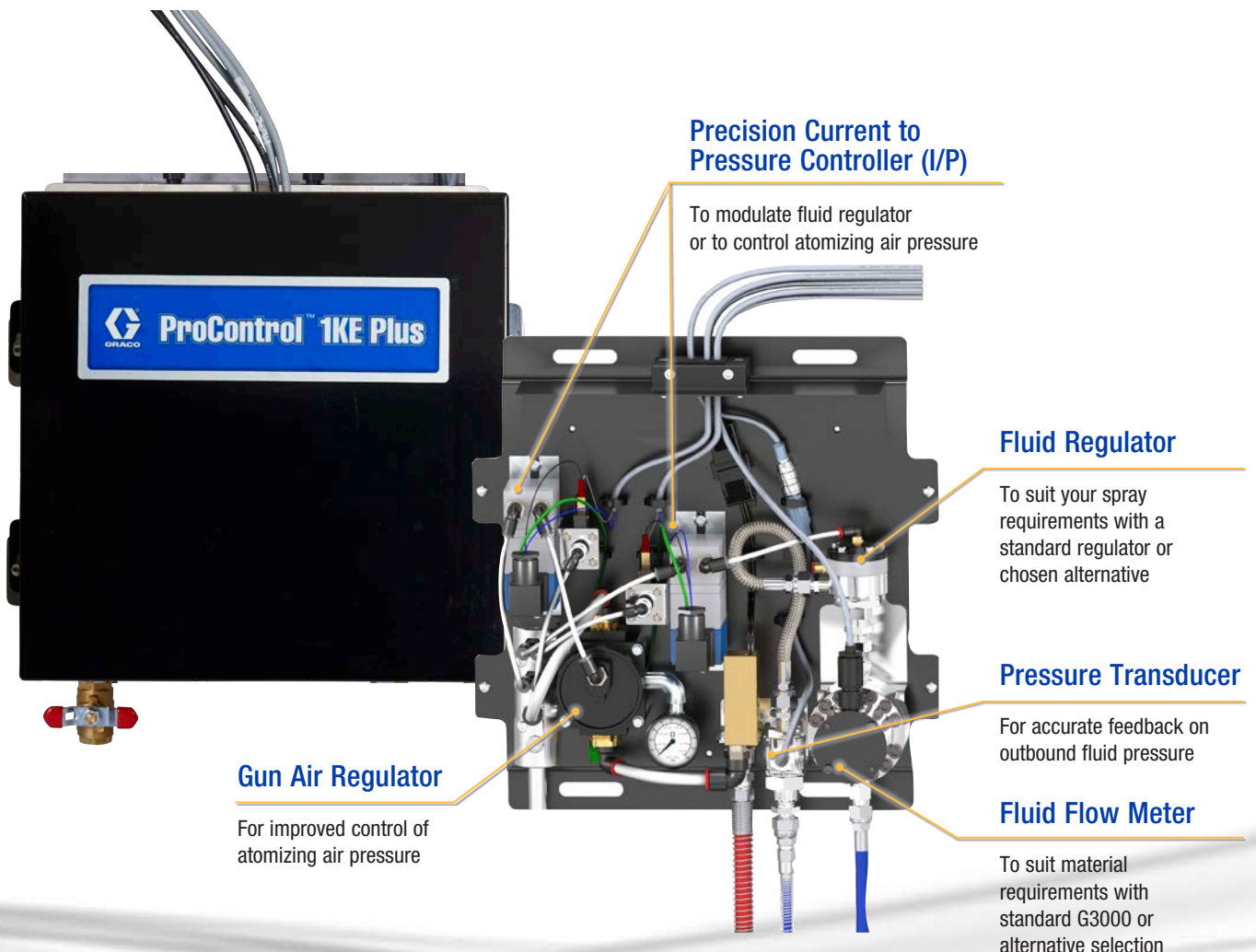
Lock settings or preset upper and lower limits, allowing operator to adjust the output within those limits

Accurate Reporting

Material Use

Easily collect material use data to:

- Track material usage for individual jobs, times and operators
- Improve operational efficiency and quality
- Report solvent and paint usage for environmental compliance



PLC Integration Strengthens Communication

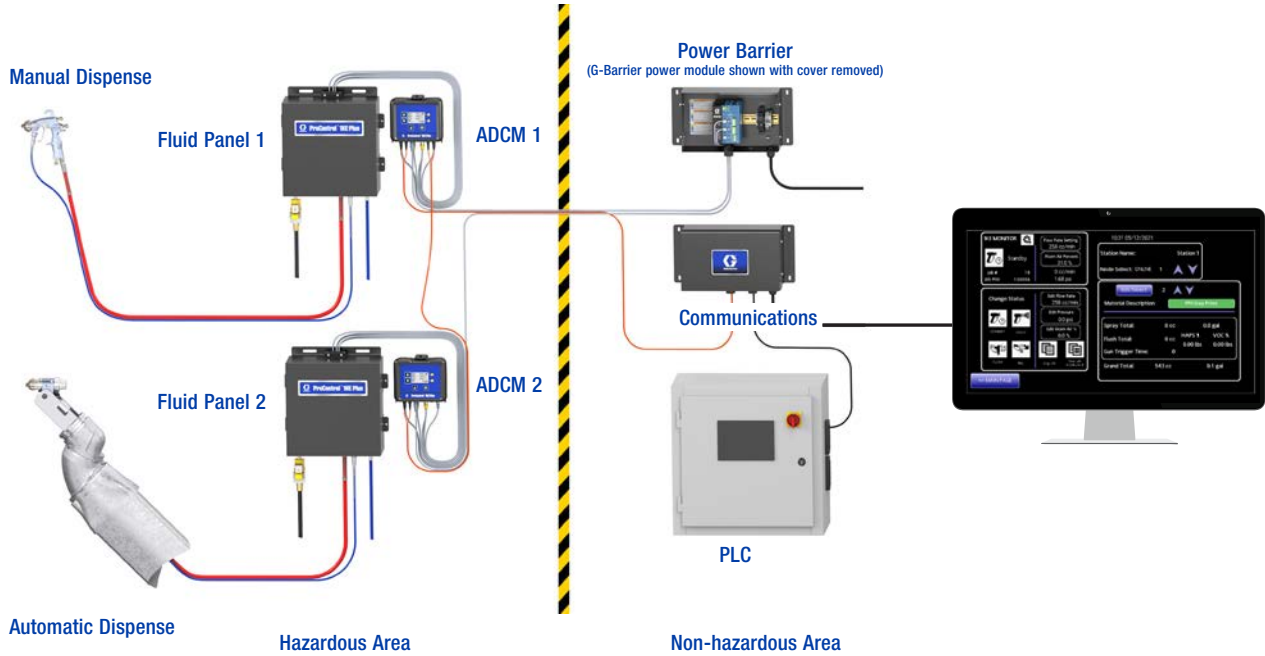
Integrating ProControl 1KE Plus with a programmable logic controller (PLC) strengthens remote monitoring, control and reporting for manual and automatic applications.

Flexible Installation

The advanced display control module (ADCM) can be mounted directly within or outside of the spray booth's hazardous area.

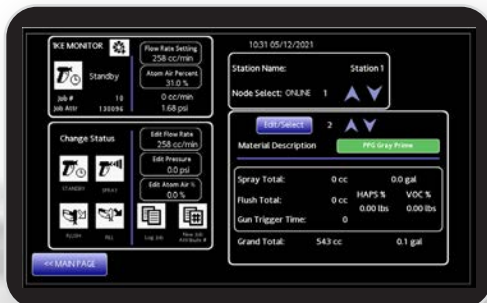
Communication Gateways

- Fiber optic cable and converters connect the PLC to as many as five ProControl 1KE Plus systems.
- PLC communication protocols prioritize the data you need to see on each ADCM.
- Details about the many communication gateway options available are in the accessories section.



User-Friendly, Customizable & Scalable Interface

Graco developed an easy-to-use interface to enhance remote monitoring, control and reporting with up to five ProControl 1KE Plus units with PLC integration. Compatible with Microsoft Windows and iOS Apple platforms, the interface works with most major web browsers.



For multiple-gun spray applications, the PLC interface synthesizes and displays comprehensive information about each gun, as well as the entire system.

Ordering Information

| Application Requirement | STEP 2 G3000 Meter | STEP 3 Standard 1:1 Fluid Regulator | Pressure Transducer | Qty I/P current to pressure transducers for managing fluid and atomizing air control | Air Regulator and Gauge | STEP 4 ProControl 1KE Plus Package Part Number |
|---|-----------------------|--|---------------------|--|-------------------------|---|
| Advanced Display Control Module (ADCM) with software and bracket only | NA | NA | NA | NA | NA | 25B283 |
| Flow Monitor (ADCM w/G3000 and short cable, no fluid panel) | ✓ | NA | NA | NA | NA | 25B284 |
| Flow Monitor with open loop fluid pressure control (includes fluid panel & I/P to operate fluid pressure regulator) | ✓ | ✓ | NA | 1 | NA | 25B285 |
| | ✓ | — | NA | 1 | NA | 25B286 |
| | — | ✓ | NA | 1 | NA | 25B287 |
| | — | — | NA | 1 | NA | 25B288 |
| Gun Atomizing Air Control | NA | NA | NA | 1 | ✓ | 25B289 |
| Closed Loop Fluid Pressure Control | NA | ✓ | ✓ | 1 | NA | 25B290 |
| | NA | — | ✓ | 1 | NA | 25B291 |
| Closed Loop Fluid Pressure or Fluid Flow Control | ✓ | ✓ | ✓ | 1 | NA | 25B292 |
| | ✓ | — | ✓ | 1 | NA | 25B293 |
| | — | ✓ | ✓ | 1 | NA | 25B294 |
| | — | — | ✓ | 1 | NA | 25B295 |
| Closed Loop Fluid Pressure and Flow + Gun Atomizing Air Control | ✓ | ✓ | ✓ | 2 | ✓ | 25B296 |
| | ✓ | — | ✓ | 2 | ✓ | 25B297 |
| | — | ✓ | ✓ | 2 | ✓ | 25B298 |
| | — | — | ✓ | 2 | ✓ | 25B299 |



Determine level of control needed.



Determine flow meter (if applicable for level of control chosen)

Gun Atomizing Air Control and Closed Loop Fluid Pressure Control units do not use a flow meter

- ✓ G3000 meter is the standard recommended meter.
- Refer to replacement parts and accessories section for alternate Graco offerings.

NOTE: Not all meters are allowed in hazardous locations see meter brochure 336165 and instruction manuals for details.



Determine fluid pressure regulator (if applicable for level of control chosen)

Gun Atomizing Air Control units do not use a fluid pressure regulator

- ✓ 24C375 1:1 Low Flow Regulator is standard (see manual 3A0427)
- Refer to replacement parts and accessories section for alternate Graco offerings.



Select base model package part number from table above.

Ordering Information

STEP 5

Determine power supply and order separately

NON-HAZARDOUS LOCATIONS

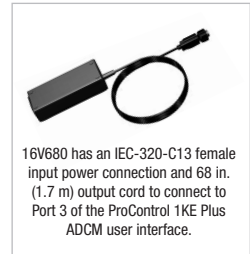
For non-hazardous locations, order power supply 16V680 AC/DC Converter and select a power cord below.

Cord Options

- 245202 120 in (3 m) North American 120 VAC power cord
- 116281 72 in (1.8 m) extension (Male x Female) IEC-320 cord
- 242001 Short, 8 in (0.2 m), IEC-320 Europe style power cord
- 242005 Short, 8 in (0.2 m), IEC-320 x ANZ style power cord



Power Cord



16V680 has an IEC-320-C13 female input power connection and 68 in. (1.7 m) output cord to connect to Port 3 of the ProControl 1KE Plus ADCM user interface.

HAZARDOUS LOCATIONS

To determine the correct Power Module for your application, answer these questions:

- | Yes | No | |
|-------|-------|---|
| _____ | _____ | Will you be using 1KE Plus models 25B296-24B299 for fluid and atomizing air control? |
| _____ | _____ | Would you want to upgrade a 1KE Plus model to control fluid and atomizing air in the future? |
| _____ | _____ | Do you need to power more than one 1KE Plus unit or in the future want to power up to three units from one power module? |
| _____ | _____ | Will the application ever require greater than 50 psi (3.4 bar) of fluid pressure at the outlet of the 1KE Plus for units with the standard 1:1 24C375 fluid regulator OR for units using an alternate air operated fluid regulator? |
| _____ | _____ | Will the application ever require greater than 50 psi (3.4 bar) of air pilot pressure to the fluid regulator? |



26C724 I.S. G-Barrier Power Module (shown with cover removed)

If you answered **YES** to **ANY** of these questions, order the 26C724 I.S. G-Barrier Power Module
 If you answered **NO** to **ALL** of these questions, consider ordering the 16M167 Single I.S. Barrier Power Module*

* **Note:** The 16M167 Single I.S. Barrier Power Module has power limitations. It cannot be used on 1KE Plus units that require greater than 50 psi of fluid pressure (50 psi of pilot air pressure for alternate air-operated fluid regulator use) or on units that control fluid and atomizing air.

Flow Meters

Highly accurate gear and mass flow meters are ideal for finishing applications using most solventborne and waterborne paints and resins.

G250, G3000 and S3000

- Positive displacement, spur gear flow meter
- Designed for low to medium viscosity materials
- Stainless steel compatible



G3000

S3000

HG6000

HG6000/HG6000 HR

- Positive displacement, helical gear flow meter
- Designed for higher flow rates and higher viscosity materials
- Stainless steel, water-base compatible

Coriolis Mass Flow Meter with or without Display

- Non-intrusive mass flow meter
- Designed for all abrasive and filled materials
- Stainless steel, waterborne and acid compatible



Coriolis Mass Flow Meter with Display

Coriolis Mass Flow Meter without Display

Ordering Information

Replacement Parts - Accessories

Power (See page 6 for important information on proper power selection)

- 16V680 Non-Intrinsically Safe (Non-IS) Power Supply, 100-240 VAC input, 50/60 Hz, 15 VDC output
- 16M167 Intrinsically Safe (IS) Power Supply Module, 100-240 VAC input. Includes 50 ft (15 m) IS power cable
- 26C724 G-Barrier Intrinsically Safe (IS) Power Module, provides up to three IS power output circuits. 100-240 VAC, 50/60 Hz, input. Includes one IS 50 ft (15 m) IS Power Cable

Cables

Non-Intrinsically Safe Cables

- 18A987 Meter Cable Extension, 50 ft (15 m), for meter cable, port #4
- 16V069 Non-IS Power Cable, 50 ft (15 m)
- 16V070 Non-IS Power Cable, 100 ft (30 m)
- 16V380 Non-IS Sensor Cable, 50' (15 m), port #7 (pressure transducer) and #10 (air flow switch or gun trigger)
- 16P791 Non-IS Control Cable, 50' (15 m), port #8 (fluid pressure/flow control) and #9 (atomizing air pressure control)
- 18A986 Indicator Light Cable, 50' (15 m), fluid panel to light

Intrinsically Safe Cables

- 19Y499 IS Power Cable, 50 ft (15 m), for power supply
- 19Y502 IS Power Cable, 100 ft (30 m), for power supply
- 18B244 IS Meter Cable Extension, 50 ft (15 m), meter cable, port #4
- 16V381 IS Sensor Cable, 50' (15 m), port #7 (pressure transducer) and #10 (air flow switch or gun trigger)
- 16V071 IS Control Cable, 50' (15 m), port #8 (fluid pressure/flow control) and #9 (atomizing air pressure control)

Fiber Optic Communication Cable

- 17T898 10 ft (3 m) Fiber Optic Cable
- 16M172 50 ft (15 m) Fiber Optic Cable
- 16M173 100 ft (30 m) Fiber Optic Cable
- 17B160 330 ft (100.5 meter) Fiber Optic Cable

Hardware Upgrades

- 25B322 Basic Upgrade Kit for converting ProControl 1KE to the new 1KE Plus platform includes software token, fluid plate with basic hardware. User must provide ADCM display, fluid meter, I/P transducer, fluid regulator, pressure transducer, and power supply from original ProControl 1KE or purchase separately. Gun air control is not included. If air control hardware is needed order 25B323 separately. See manual 3A6948 for details
- 25B323 Air Control Upgrade Kit adds air control to a ProControl 1KE Plus fluid plate
- 25B325 Pressure Switch Conversion Kit converts ProControl 1KE Plus fluid plate gun air flow switch to a pressure switch for detection of gun trigger status

Communication Gateway

- 25B471 Ethernet Communication Gateway Assembly
- 25B472 DeviceNet Communication Gateway Assembly
- 25B473 Profibus Communication Gateway Assembly
- 25B486 Ethernet Communication Gateway Assembly with Fiber Conversion Module, no cable
- 18C235 Bare Ethernet Gateway Module
- 18C236 Expansion Module, DeviceNet for 18C235
- 18C237 Expansion Module, Profibus for 18C235

Indicators

- 25P594 IS Indicator Light Tower, 2 color light with bracket and cables connects to the ADCM

Supply Air

- 570122 Dual Unit Air Filter and Regulator Assembly with 5 µm filter, manual drain, and mounting bracket

Interfaces

- 24R086 Fiber Optic to Serial Converter Module with 24V, 2 amp power supply and enclosure, communicates from ProControl 1KE Plus to a PLC See manual 332356 for details
- 24N978 Fiber Optic to Serial Converter, communicates from the ProControl 1KE Plus to a PLC. See manual 332356 for details

Meters & Transducers

- 289813 G3000 Meter
Positive displacement, gear flow meter, 0.02 to 1.0 gpm (75 to 3800 cc/min), for low to medium viscosity materials
- 280560 HG6000 Meter
Positive displacement, helical gear flow meter, 0.013 to 6.0 gpm (50 to 22,712 cc/min), for high flow, high viscosity materials
- 258718 S3000 Solvent Meter
Positive displacement, gear flow meter, 0.01 to 0.5 gpm (38 to 1900 cc/min), for light viscosity materials
- 25P592 Pressure Transducer Kit, 100 psi (7 bar, 0.7 MPa)
Used to measure fluid pressure
- 25P593 High Pressure Sensor Kit, 4500 psi (310 bar, 31.0 MPa)
Used to convert to higher pressure operation
See manual 3A6948 component pressure ratings
- 25B359 Medium Pressure Sensor Kit, 2000 psi (138 bar, 13.8 MPa)
Used to convert to higher pressure operation
See manual 3A6948 component pressure ratings

Coriolis Meter Kit

Non-intrusive Mass Flow Meter, for abrasive and filled materials and a range of flow rates

- 24N525 1/4 in Coriolis Flow Meter Kit with Display
- 19D786 1/4 in Coriolis Flow Meter Kit without Display
- 19D559 CommuBox for Coriolis Flow Meter without Display
- 19D558 Software and USB memory stick assembly

Fluid Regulators

- 24C375 1:1 Low Flow Regulator (5-90 psi, 0.3-6.3 bar, 35-620 KPa)
- 24E471 1:2 Low Flow Regulator (5-50 psi, 0.3-3.5 bar, 35-350 KPa)
- 24E472 1:3 Low Flow Regulator (5-30 psi, 0.3-2.1 bar, 35-201 KPa)
- 234272 Low Pressure Fluid Regulator
(6-145 psi, 0.4-10.0 bar, 40-1000 KPa), 7 gpm
- 234266 High Pressure Fluid Regulator
(70-900 psi, 5.0-60.0 bar, 0.5-6 MPa), 11.3 gpm



ABOUT GRACO

PROVEN QUALITY. LEADING TECHNOLOGY.

Founded in 1926, Graco is a world leader in fluid handling systems and components. Graco products move, measure, control, dispense and apply a wide range of fluids and viscous materials used in vehicle lubrication, commercial and industrial settings.

The company's success is based on its unwavering commitment to technical excellence, world-class manufacturing and unparalleled customer service. Working closely with qualified distributors, Graco offers systems, products and technology that set the quality standard in a wide range of fluid handling solutions. Graco provides equipment for spray finishing, protective coating, paint circulation, lubrication, and dispensing sealants and adhesives, along with power application equipment for the contractor industry. Graco's ongoing investment in fluid management and control will continue to provide innovative solutions to a diverse global market.

GRACO LOCATIONS

MAILING ADDRESS

P.O. Box 1441
Minneapolis, MN 55440-1441
Tel: 612-623-6000
Fax: 612-623-6777

AMERICAS

MINNESOTA

Worldwide Headquarters
Graco Inc.
88-11th Avenue N.E.
Minneapolis, MN 55413

EUROPE

BELGIUM

European Headquarters
Graco N.V.
Industrieterrein-Oude Bunders
Slakweidestraat 31
3630 Maasmechelen,
Belgium
Tel: 32 89 770 700
Fax: 32 89 770 777

ASIA PACIFIC

AUSTRALIA

Graco Australia Pty Ltd.
Suite 17, 2 Enterprise Drive
Bundoora, Victoria 3083
Australia
Tel: 61 3 9468 8500
Fax: 61 3 9468 8599

CHINA

Graco Hong Kong Ltd.
Shanghai Representative Office
Building 7, No.1-2,
Wenshui Road 299,
Jing'an District,
Shanghai 200436,
The People's Republic of China
Tel: 86 21 649 50088
Fax: 86 21 649 50077

INDIA

Graco India Pvt Ltd
Plot No 295, Udyog Vihar Phase-IV
Gurugram - 122015 (Haryana)
India
Tel: 91 124 661 0200
Fax: 91 124 661 0201

JAPAN

Graco K.K.
1-27-12 Hayabuchi
Tsuzuki-ku
Yokohama City, Japan 2240025
Tel: 81 45 593 7300
Fax: 81 45 593 7301

KOREA

Graco Korea Inc.
38, Samsung 1-ro 1-gil
Hwaseong-si, Gyeonggi-do,
18449
Republic of Korea
Tel: 82 31 8015 0961
Fax: 82 31 613 9801

SALES/ DISTRIBUTION/ SERVICE

Call today for product information or to request a demonstration.

877-84GRACO (1-877-844-7226) or visit us at www.graco.com/procontrol1keplus

Graco Inc. is registered to I.S. EN ISO 9001

North America
Customer Service
800-328-0211
Fax 877-340-6427