

ExactaBlend™ 先进抛光配比器 (AGP) 配件包

332553B

ZH

用于分配双组分有机硅涂料。
仅适合专业用途。

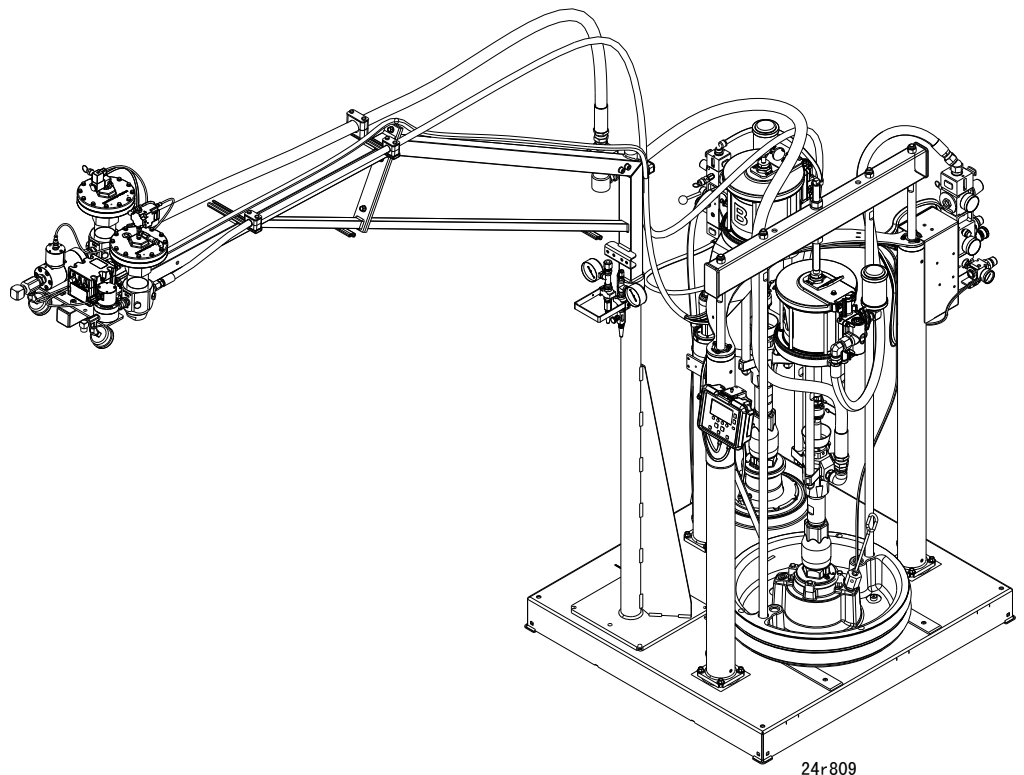
未获准用于爆炸性环境或危险场所。

请参阅 ExactaBlend AGP 先进抛光配比器安装操作手册，了解最大工作压力和型号信息。



重要安全说明

请阅读本手册及 ExactaBlend AGP 先进抛光
配比器安装操作手册中的所有警告及说明。
妥善保存所有说明书。



24r809

相关手册

请参阅 ExactaBlend AGP 先进抛光配比器安装操作手册，获取相关手册的完整列表。

目录

| | |
|--------------------------------|-----------|
| 相关手册 | 2 |
| 目录 | 2 |
| 安装 | 3 |
| 灯塔，24R824 | 3 |
| 低液位传感器，24R935 | 4 |
| 标定检验组件，24R777 | 6 |
| USB 配件包，24R936 | 7 |
| 脚轮配件包，24T091 | 8 |
| 操作 | 9 |
| USB 配件包，24R936 | 9 |
| 故障排除 | 10 |
| 零件 | 12 |
| 灯塔，24R824 | 12 |
| 低液位传感器，24R935 | 13 |
| 标定检验组件，24R777 | 14 |
| 标定检验模块 | 15 |
| USB 配件包，24R936 | 16 |
| 脚轮配件包，24T091 | 17 |
| Graco Standard Warranty | 18 |
| Graco Information | 18 |

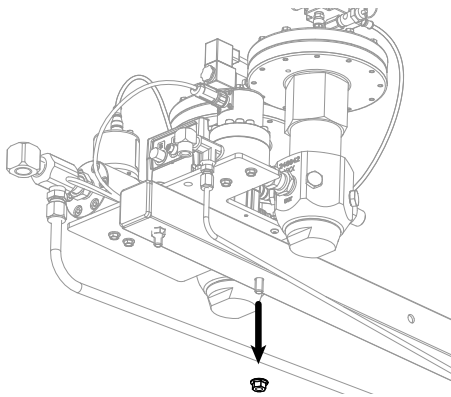
安装

灯塔，24R824

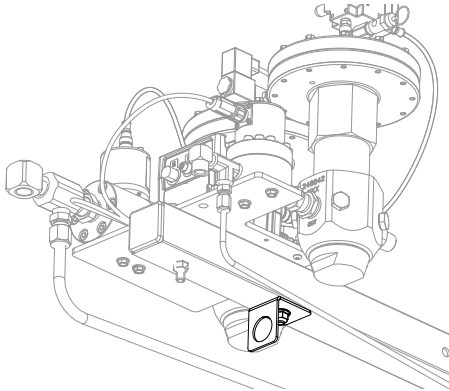
1. 执行 ExactaBlend AGP 先进抛光配比器安装操作手册中的关机程序。
2. 拆卸固定流体盘的后螺母。

注意

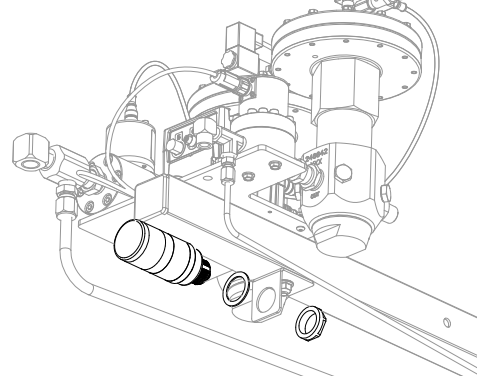
请不要拆卸两个螺栓，以避免损坏或损伤机器。



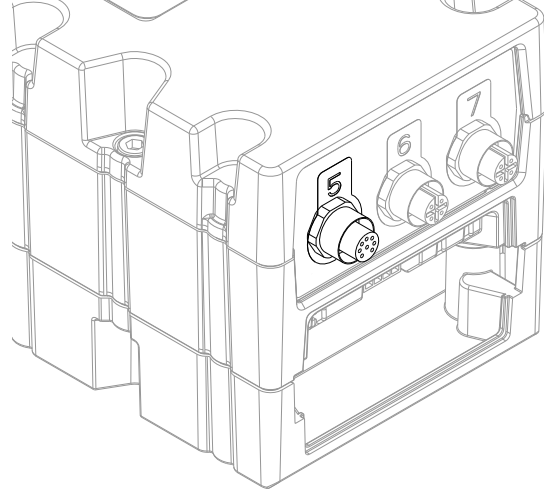
3. 将灯塔支架固定在动臂组件上。用 24 磅英寸 (33 牛·米) 的扭力拧紧螺母。



4. 将灯塔安装在支架上。用手拧紧灯塔螺母。

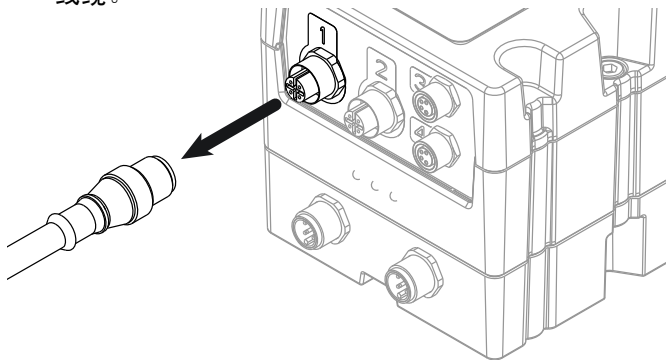


5. 将灯塔线缆接入流体控制模块 (FCM) 上的端口 5。

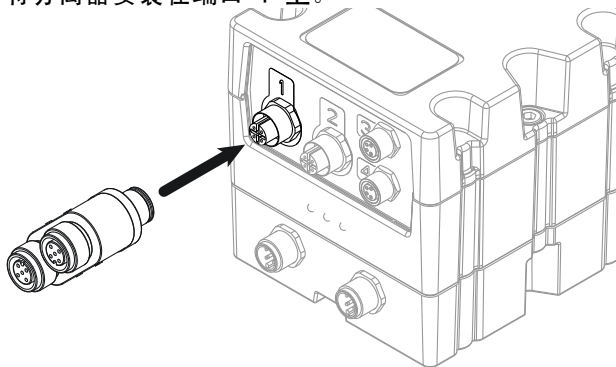


低液位传感器，24R935

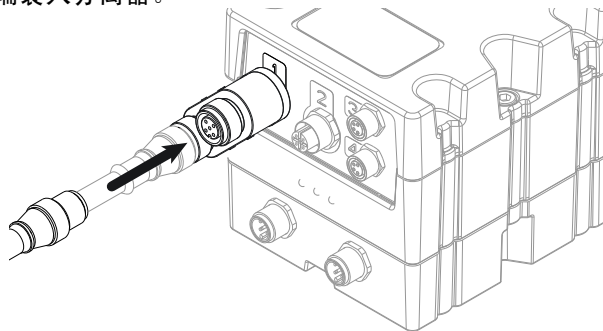
1. 执行 ExactaBlend AGP 先进抛光配比器安装操作手册中的关机程序。
2. 从流体控制模块 (FCM) 上的端口 1 拆卸空气切断阀线缆。



3. 将分离器安装在端口 1 上。

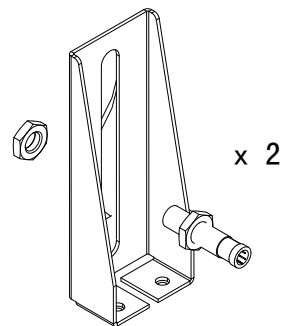


4. 将空气切断阀线缆和标记有“J1B”的低电平线缆端装入分离器。

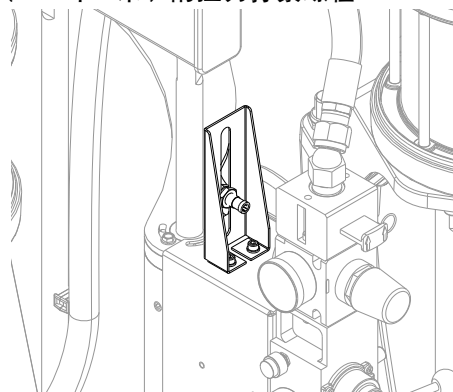


5. 沿着动臂铺设低电平线缆。遵循已安装空气软管和电气线路的走向。

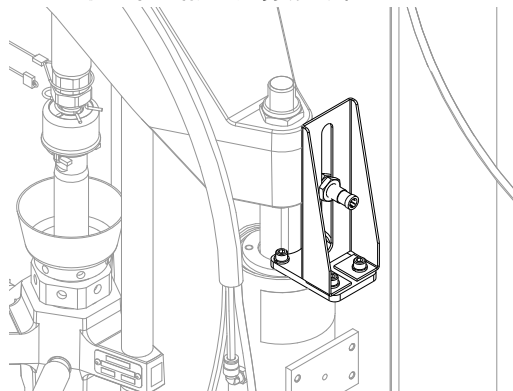
6. 将传感器安装在支架上。



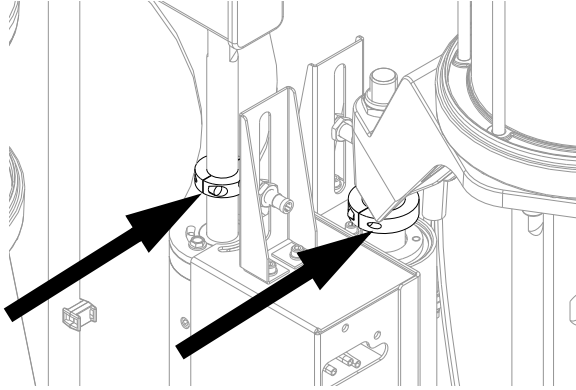
7. 将支架安装到基本柱塞的电气外壳上。用 5.1 磅英尺 (6.9 牛·米) 的扭力拧紧螺栓。



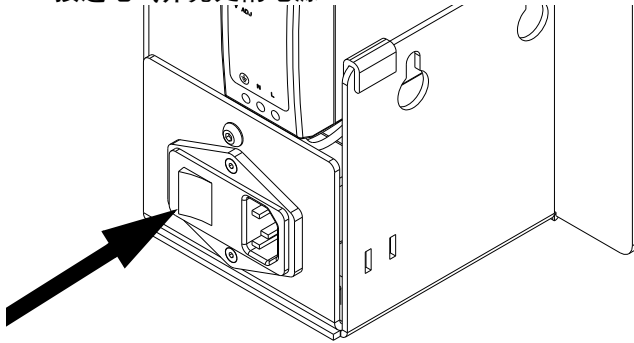
8. 将支架安装到催化剂柱塞的泵柱上。用 5.1 磅英尺 (6.9 牛·米) 的扭力拧紧螺栓。



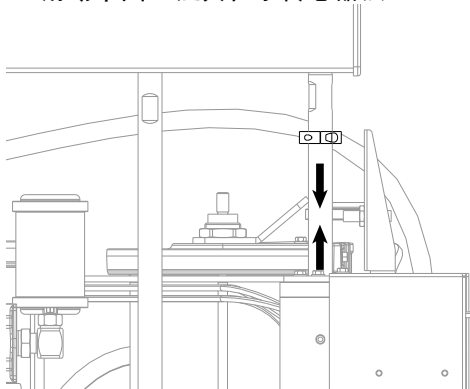
9. 在两个化学柱塞的柱轴上安装卡圈。



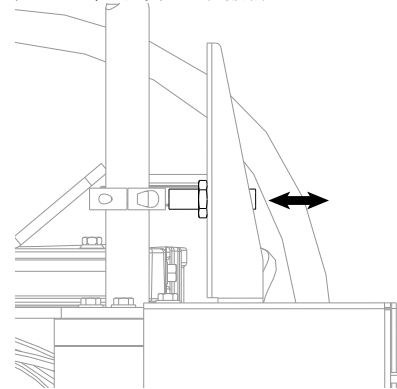
10. 将标记有“J1BA”的线缆端连接到基本传感器。
 11. 将标记有“J1BA”的线缆端连接到催化传感器。
 12. 铺设并固定接入线缆，这使线缆在机器正常工作期间不会被损坏。
 13. 接通电气外壳处的电源。



14. 滑动卡圈，让其位于传感器层。



15. 调整传感器，直到它感应到卡圈。传感器上的灯会亮起，以直观表明传感器被激活。



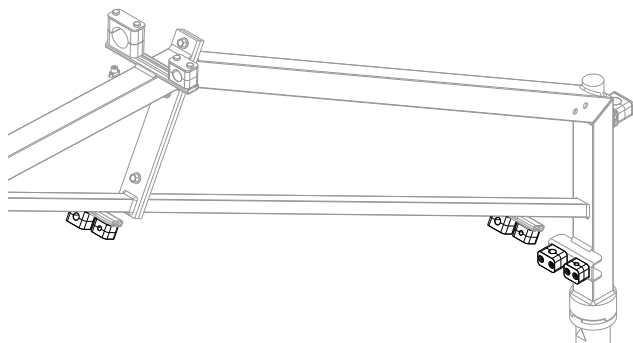
16. 将传感器拧紧在其当前位置上。
 17. 将轴上的卡圈调整到需要的高度，然后拧紧。当机器发现出现空桶时，就会确定放置卡圈。
 18. 对于其他化学传感器，重复步骤 14 至 17。
 19. 导航到显示模块 (DM) 上的设置屏幕，激活低液位传感器选项。



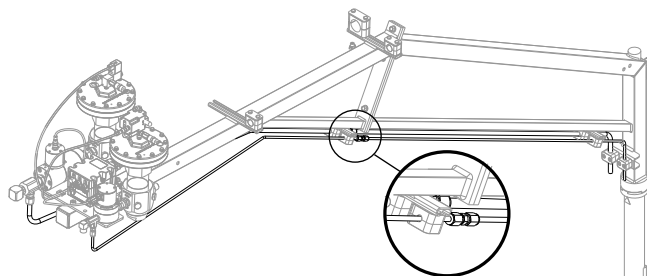
标定检验组件，24R777

1. 执行 ExactaBlend AGP 先进抛光配比器安装操作手册中的关机程序。
2. 将软管夹安装在动臂组件上。用手拧紧所有软管夹。

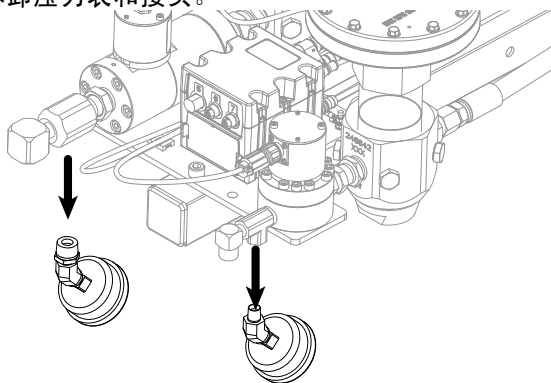
注意：基材管的直径为 0.5 英寸 (1.3 厘米)。验证软管管夹是否安装在动臂组件的正确一侧。



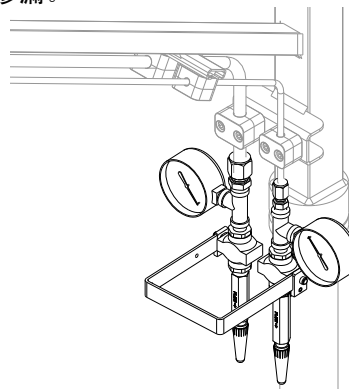
5. 将涂料管线安装在动臂组件上。拧紧所有接头，防止渗漏。



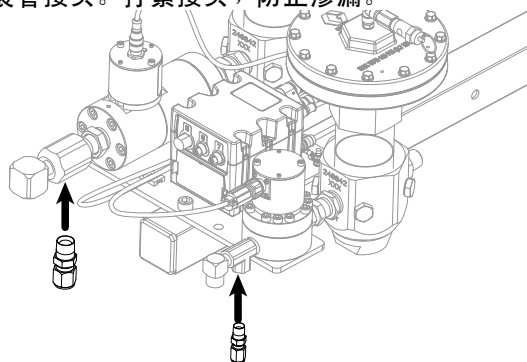
3. 拆卸压力表和接头。



6. 将止回阀组件安装在管线上。拧紧所有接头，防止渗漏。

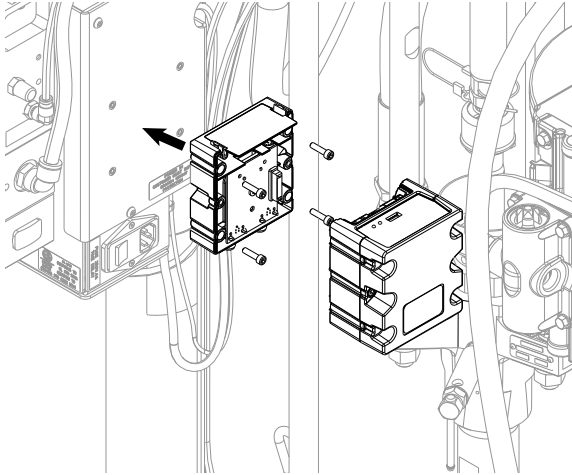


4. 安装管接头。拧紧接头，防止渗漏。

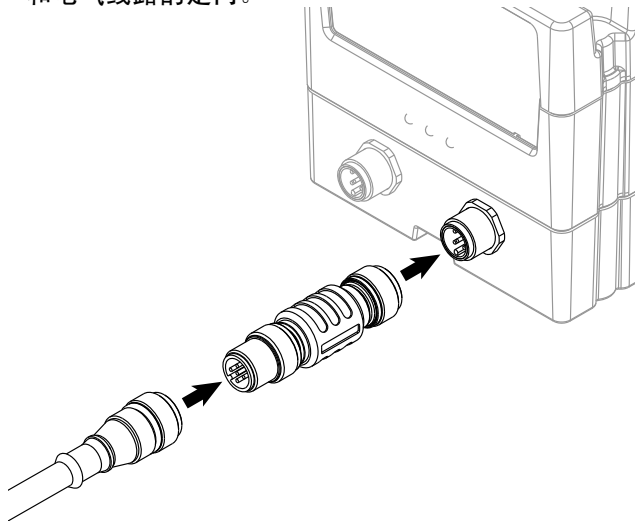


USB 配件包，24R936

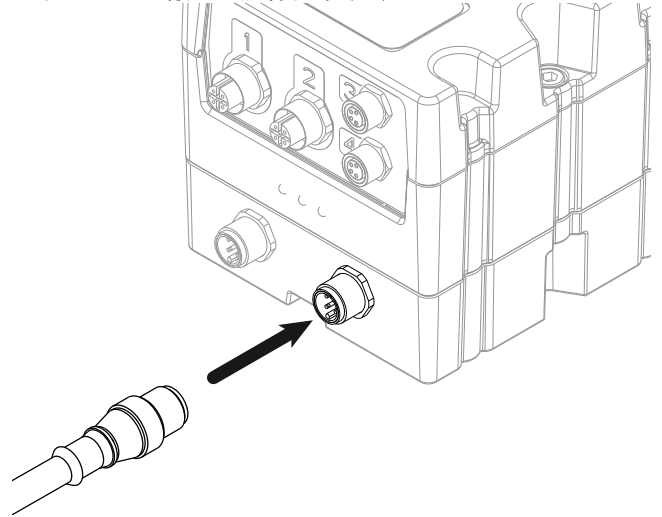
1. 执行 ExactaBlend AGP 先进抛光配比器安装操作手册中的**关机**程序。
2. 将 USB 模块安装在电气外壳一侧。用 2.6 磅英尺 (3.5 牛·米) 的扭力拧紧螺栓。



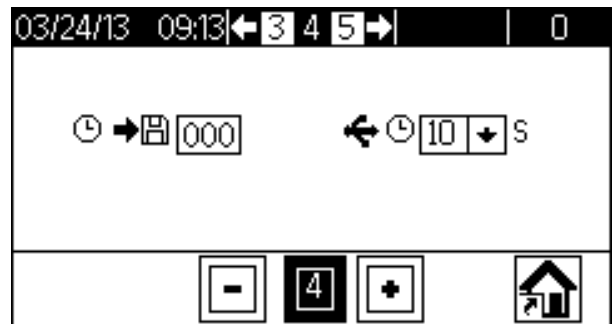
3. 将适配器连接至 USB 模块。将 CAN 线缆接入适配器。沿着动臂铺设 CAN 线缆。遵循已安装空气软管和电气线路的走向。



4. 将 CAN 线缆接入流体控制模块 (FCM)。

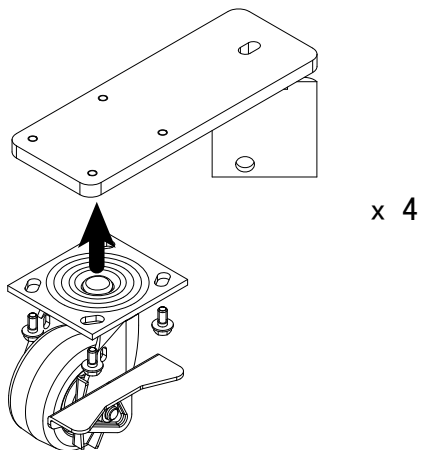


5. 请参阅 ExactaBlend AGP 先进抛光配比器安装操作手册，了解屏幕详细信息。



脚轮配件包，24T091

1. 将脚轮安装到支架上。给螺纹涂上中等强度的螺纹锁固剂。用 21 磅英尺 (29 牛·米) 的扭力拧紧紧固件。

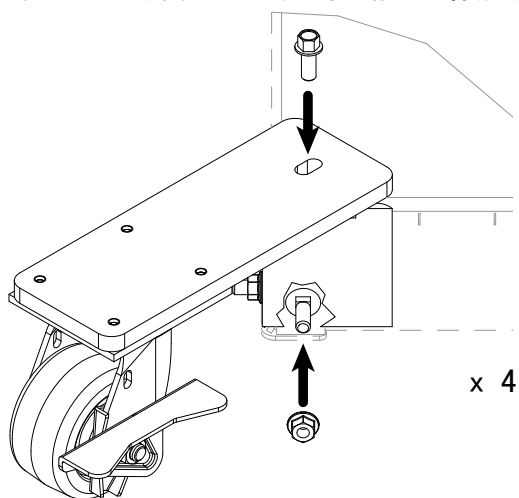


2. 提升机器，直至机器离地 3 英寸 (8 厘米)。

注意

提升机器时如未进行固定来防止坠落，则可能会造成伤害。安装脚轮配件包时，将机器放在架子或支撑物上。

3. 将支架固定在基架上。给螺纹涂上中等强度的螺纹锁固剂。用 30 磅英尺 (40 牛·米) 的扭力拧紧螺栓。



4. 降低机器。

操作

USB 配件包，24R936

将 USB 存储设备插入 USB 模块时，DM 屏幕上会出现一个状态图标。下载完成时，图标会出现，如图所示。



数据

故障代码

该文件显示日期、时间、故障 / 事件代码和代码状态。请参阅 ExactaBlend AGP 先进抛光配比器安装操作手册中的 **DM 故障代码**，了解代码信息。

注意：代码具有以下状态列信息：

- “0” - 生成故障 / 事件
- “1” - 机器确认故障 / 事件。无需用户确认。
- “2” - 用户确认故障 / 事件。

| | A | B | C | D |
|----|-----------------------------|----------|-------------|----|
| 1 | Error_Log | | | |
| 2 | S/N:FFFFFFFF | | | |
| 3 | Software_Part_Number:15W201 | | | |
| 4 | Software_Version:1.10.001 | | | |
| 5 | 6/4/2013 13:18 | | | |
| 6 | | | | |
| 7 | Date | Time | Error/Event | -- |
| 8 | 6/4/2013 | 11:26:29 | EMM0 | 2 |
| 9 | 6/4/2013 | 11:26:46 | ELM0 | 2 |
| 10 | 6/4/2013 | 11:26:46 | EBDX | 2 |
| 11 | 6/4/2013 | 11:26:46 | E9D0 | 2 |
| 12 | 6/4/2013 | 11:27:12 | EGC6 | 2 |
| 13 | 6/4/2013 | 11:27:13 | EGB9 | 2 |
| 14 | 6/4/2013 | 11:27:13 | EGA9 | 2 |
| 15 | 6/4/2013 | 11:27:15 | EGAA | 2 |
| 16 | 6/4/2013 | 11:27:16 | EGBA | 2 |
| 17 | 6/4/2013 | 11:27:20 | EGA9 | 2 |

运行数据

该文件显示日期、时间、目标比率、实际比率、平均流速、泵 A 和泵 B 化学制品分配。所有化学制品分配值以千克为单位显示。信息每隔 5 秒钟记录一次。

注意：仅当系统处于“正常”状态和正常运行模式分配期间才会记录数据。

| | B | C | D | E | F | G |
|--------------|----------|--------------|--------------|-------------------|-------------------------|-------------------------|
| ver:15W201 | | | | | | |
| io.001 | | | | | | |
| 4/2013 13:18 | | | | | | |
| | Time | Target_Ratio | Actual_Ratio | Average Flow Rate | PUMP_A: Total_Dispensed | PUMP_B: Total_Dispensed |
| 6/4/2013 | 11:32:20 | 13.3 | 0 | 0 | 2908 | 364.25 |
| 6/4/2013 | 11:32:25 | 13.3 | 0 | 949 | 2909.5 | 364.75 |
| 6/4/2013 | 11:32:30 | 13.3 | 0 | 889 | 2911 | 364.75 |
| 6/4/2013 | 11:32:35 | 13.3 | 0 | 996 | 2912.75 | 365 |
| 6/4/2013 | 11:32:40 | 13.3 | 0 | 0 | 2913.75 | 365 |
| 6/4/2013 | 11:32:45 | 13.3 | 0 | 0 | 2913.75 | 365 |
| 6/4/2013 | 11:32:50 | 13.3 | 0 | 0 | 2913.75 | 365 |
| 6/4/2013 | 11:33:18 | 13.3 | 0 | 0 | 2913.75 | 365 |

软件数据

该文件显示日期、时间、部件号和目前安装在机器上的软件版本。

注意：文件仅在下载深度设为“0”时显示信息。

| | A | B | C | D |
|----|-----------------------------|---------|--------|-------------------|
| 1 | Software | | | |
| 2 | S/N:FFFFFFFF | | | |
| 3 | Software_Part_Number:15W201 | | | |
| 4 | Software_Version:1.10.001 | | | |
| 5 | 6/4/2013 13:18 | | | |
| 6 | | | | |
| 7 | Date | Time | Node: | Software_Version: |
| 8 | 00/00/2000 | 0:00:00 | 16U599 | 1.02.186 |
| 9 | 00/00/2000 | 0:00:00 | 16U275 | 1.02.189 |
| 10 | 00/00/2000 | 0:00:02 | 16V205 | 1.01.012 |

故障排除



1. 先执行 ExactaBlend AGP 先进抛光配比器安装操作手册中的泄压程序，然后检查或修理喷枪。
2. 在拆卸喷枪之前，要检查所有可能存在的故障及其原因。

| 故障 | 原因 | 解决办法 |
|-------------------------|--------------------|------------------------------|
| 灯塔 | | |
| 先开启机器时，灯不按顺序闪烁绿色、红色、关闭。 | 连接不良或线缆损坏。 | 确保已连接好线缆或更换线缆。 |
| | 灯堆栈损坏。 | 更换灯堆栈。 |
| 低液位传感器 | | |
| 传感器未激活。 | 在 DM 上未激活低液位传感器选项。 | 导航至 屏幕 ，然后激活低液位传感器选项。 |
| | 传感器安装错误。 | 调整传感器，直到它由卡圈激活。 |
| | 卡圈安装在轴上的位置过高。 | 降低卡圈，直至传感器被激活。 |
| | 连接不良或线缆损坏。 | 确保已连接好线缆或更换线缆。 |
| | 传感器故障损坏。 | 更换传感器。 |
| USB 配件包 | | |
| 屏幕不显示 USB 选项。 | 连接不良或线缆损坏。 | 确保已连接好线缆或更换线缆。 |
| | GCA 组件损坏。 | 更换 GCA 组件。 |

零件

灯塔，24R824

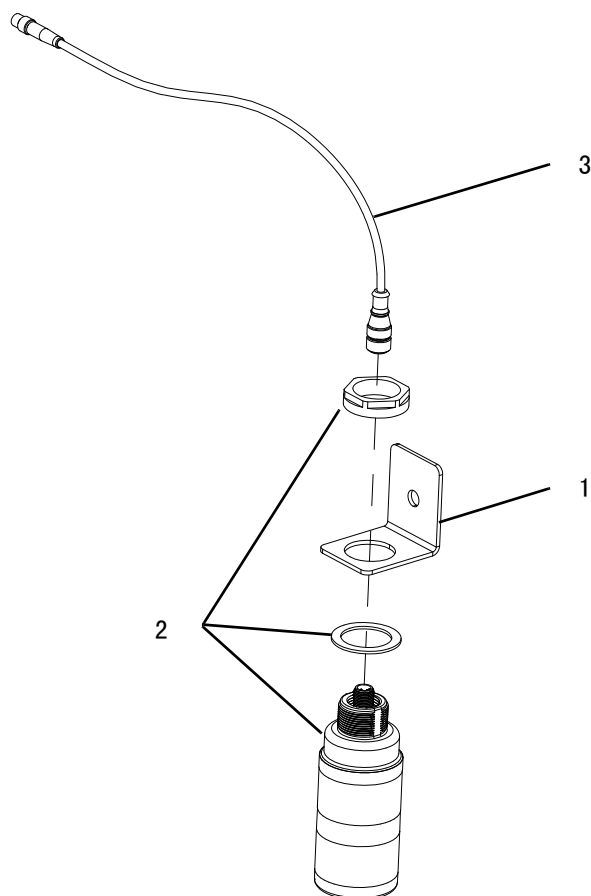


图 1: 灯塔

| 参考 | 零件 | 说明 | 数量 |
|----|--------|---|----|
| 1 | --- | BRACKET, tower, light, 30mm | 1 |
| 2 | 127187 | LIGHT, tower, 30mm, red / green / alarm | 1 |
| 3 | 127184 | HARNESS, m12xm12 | 1 |

--- 不可单独销售。

低液位传感器，24R935

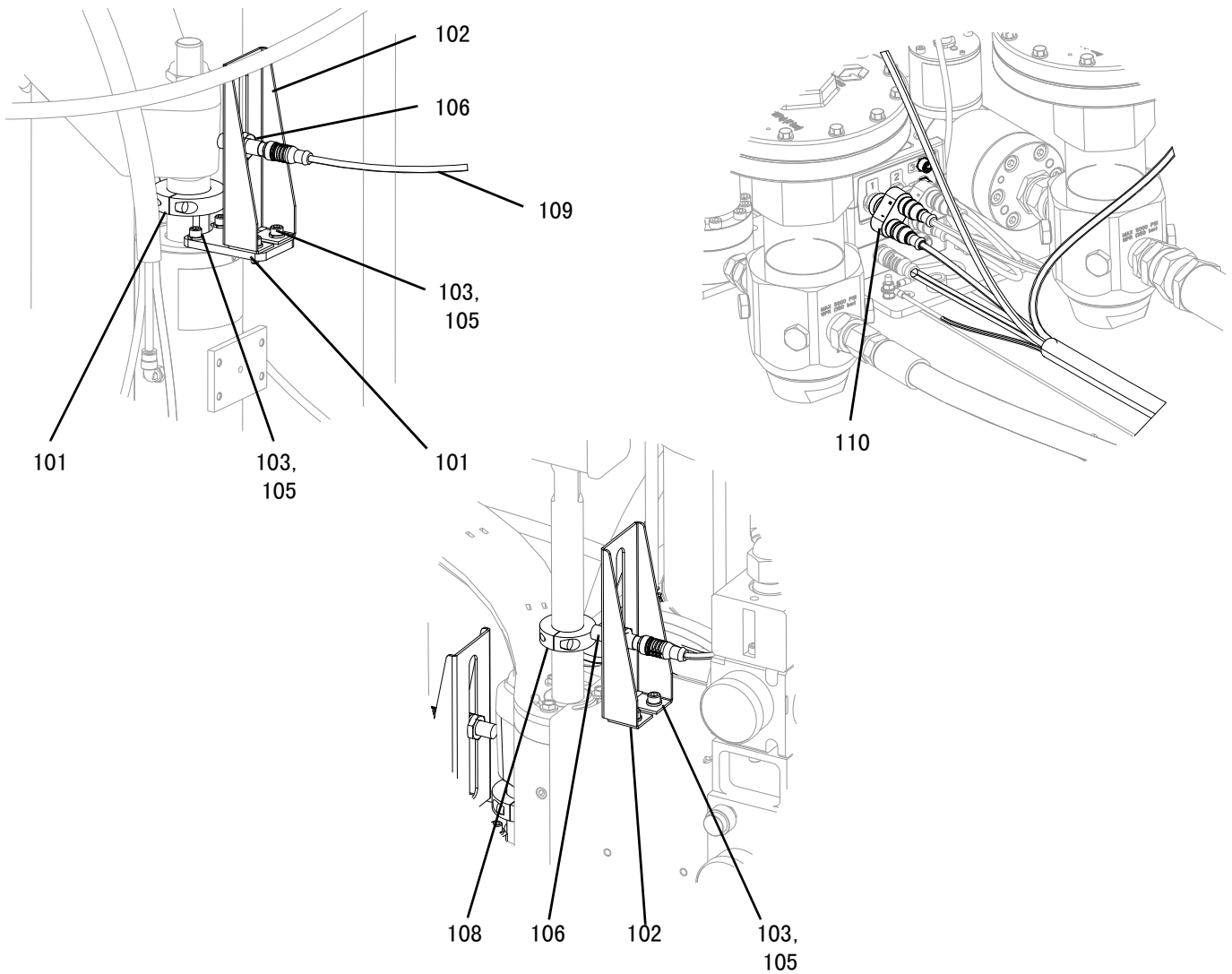


图 2: 低液位传感器

| 参考 | 零件 | 说明 | 数量 |
|-----|--------|-------------------------------------|----|
| 101 | --- | BRACKET, sensor, level, catalyst | 1 |
| 102 | --- | BRACKET, sensor, low/empty | 2 |
| 103 | --- | WASHER, lock, 1/4 | 6 |
| 104 | --- | SCREW, cap, socket head, 1/4-20x5/8 | 2 |
| 105 | --- | SCREW, socket head, M6-1x16mm | 4 |
| 106 | 122716 | SENSOR, inductive, m12 | 2 |
| 107 | 127140 | COLLAR, clamp, 1-3/8 id, 2piece | 1 |
| 108 | 127141 | COLLAR, clamp, 1 id, 2piece | 1 |
| 109 | 127137 | HARNESS, splitter, m12, 5pin | 1 |
| 110 | 126520 | CONNECTOR, splitter, m12 | 1 |

--- 不可单独销售。

标定检验组件，24R777

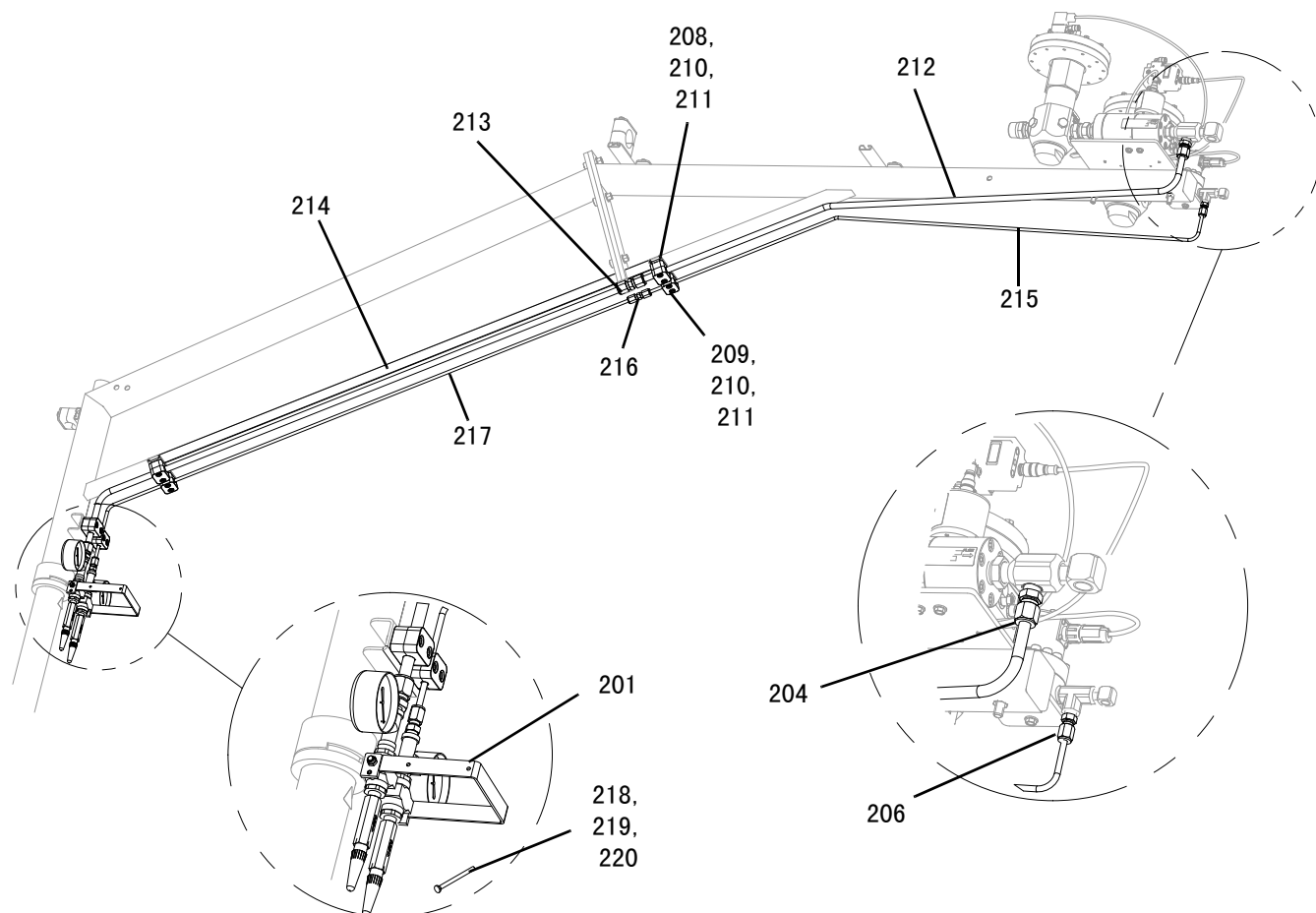


图 3: 标定检验组件

| 参考 | 零件 | 说明 | 数量 |
|-----|--------|---|----|
| 201 | --- | MODULE, ratio check, | 1 |
| 204 | 127071 | FITTING, flareless, 1/2 npt x 1/2 tube | 1 |
| 206 | 127070 | FITTING, flareless, 1/4 npt x 1/4 tube | 1 |
| 208 | 126691 | CLAMP, 1/2 in. od hose | 3 |
| 209 | 126682 | CLAMP, 1/4 in. od hose | 3 |
| 210 | --- | SCREW, cap, socket head, 1/4-20x3/4 | 12 |
| 211 | 122643 | NUT, rail | 12 |
| 212 | 16V586 | TUBE, ratio, base, inlet | 1 |
| 213 | 127102 | FITTING, flareless, 1/2 tube x 1/2 tube | 1 |
| 214 | 16V587 | TUBE, ratio, base, outlet, 1/2 | 1 |
| 215 | 16V588 | TUBE, ratio, catalyst, inlet, 1/4 | 1 |
| 216 | 127103 | FITTING, flareless, 1/4 tube x 1/4 tube | 1 |
| 217 | 16V589 | TUBE, ratio, outlet, 1/4 | 1 |
| 218 | 16V356 | PIN, restrictor, #1, 0.094 in. | 1 |
| 219 | 16V357 | PIN, restrictor, #3, 0.102 in. | 1 |
| 220 | 16V359 | PIN, restrictor, #2, 0.098 in. | 1 |

--- 不可单独销售。

标定检验模块

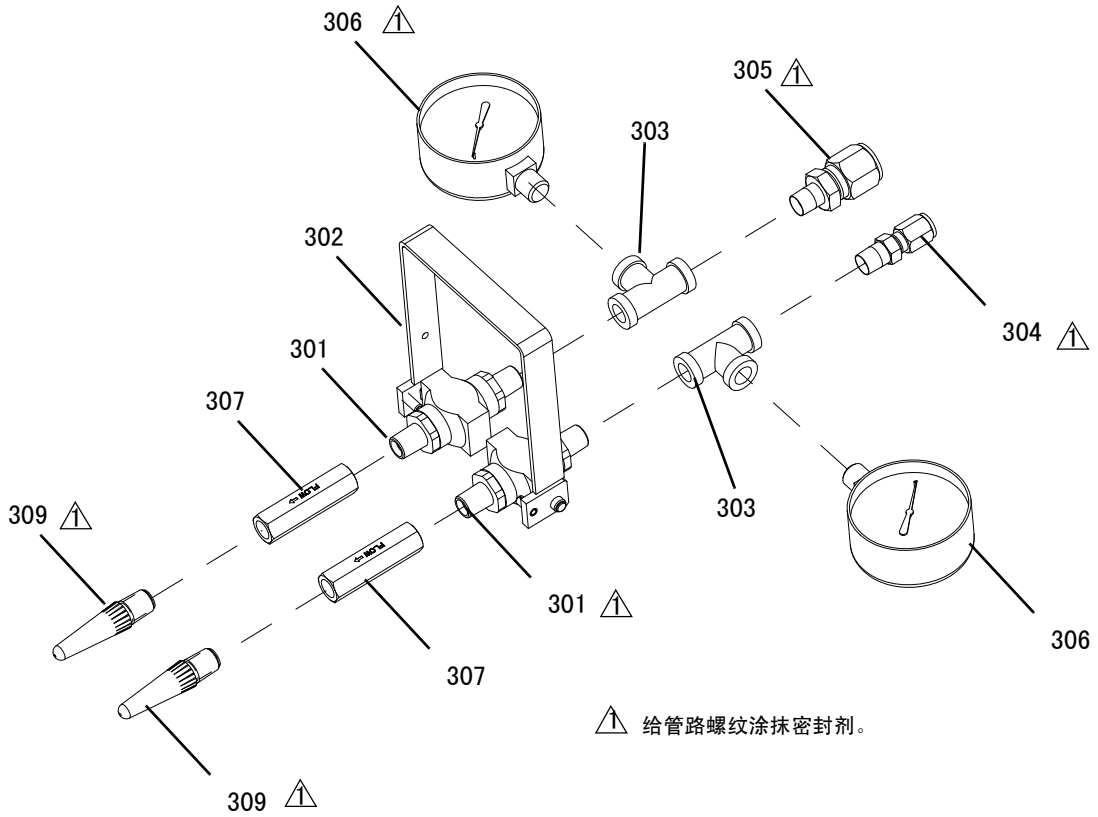


图 4: 标定检验模块

| 参考 | 零件 | 说明 | 数量 |
|-----|--------|--|----|
| 301 | 215622 | VALVE, ball | 2 |
| 302 | 217562 | LEVER, valve | 1 |
| 303 | 104984 | FITTING, tee, pipe | 2 |
| 304 | 127070 | FITTING, flareless, 1/4 npt x 1/4 tube | 1 |
| 305 | 127051 | FITTING, flareless, 1/4 npt x 1/2 tube | 1 |
| 306 | 112941 | GAUGE, pressure, fluid | 2 |
| 307 | 16V360 | HOUSING, restrictor, 1/4 npt | 2 |
| 309 | 512135 | NOZZLE, extrusion | 2 |

USB 配件包， 24R936

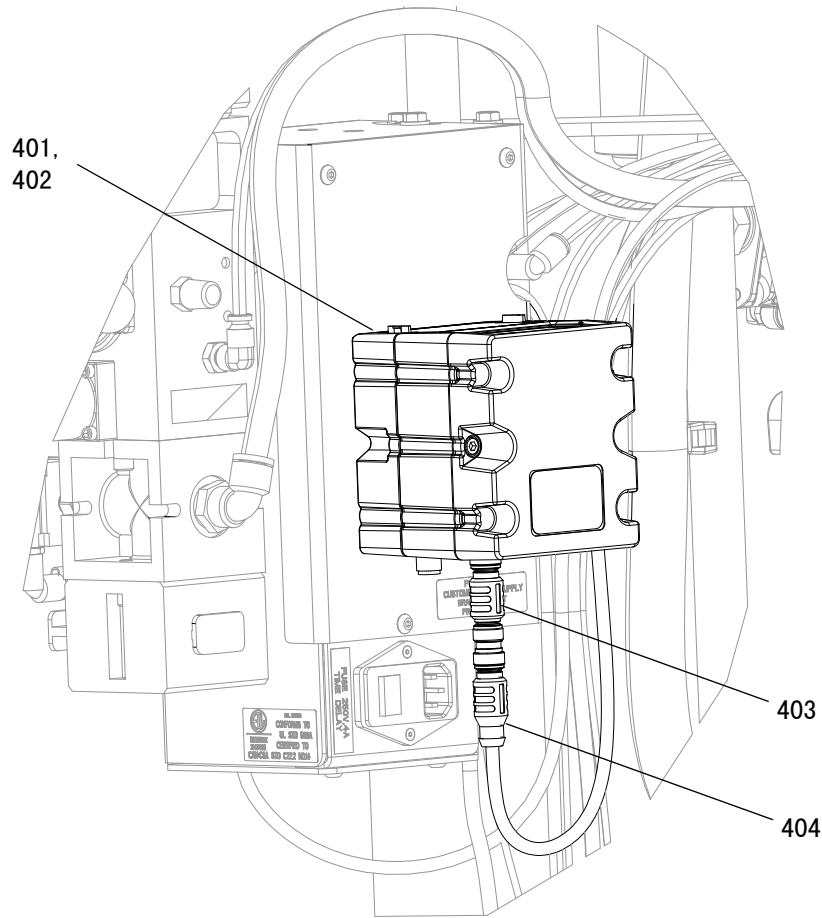


图 5: USB 配件包

| 参考 | 零件 | 说明 | 数量 |
|-----|--------|---------------------------------------|----|
| 401 | 24T005 | MODULE, GCA, cube | 1 |
| 402 | --- | SCREW, socket head, 10-32x0.75 | 4 |
| 403 | 16T072 | ADAPTER, cable, CAN, IS to non IS | 1 |
| 404 | 120952 | CABLE, CAN, female / female 4.0 meter | 1 |
| 405 | 16V853 | SOFTWARE, GCA | 1 |

脚轮配件包，24T091

- △1 给螺纹涂上中等强度的螺纹锁固剂。
- △2 用 30 英尺-磅 (40 牛·米) 的扭力拧紧。
- △3 用 21 英尺-磅 (29 牛·米) 的扭力拧紧。

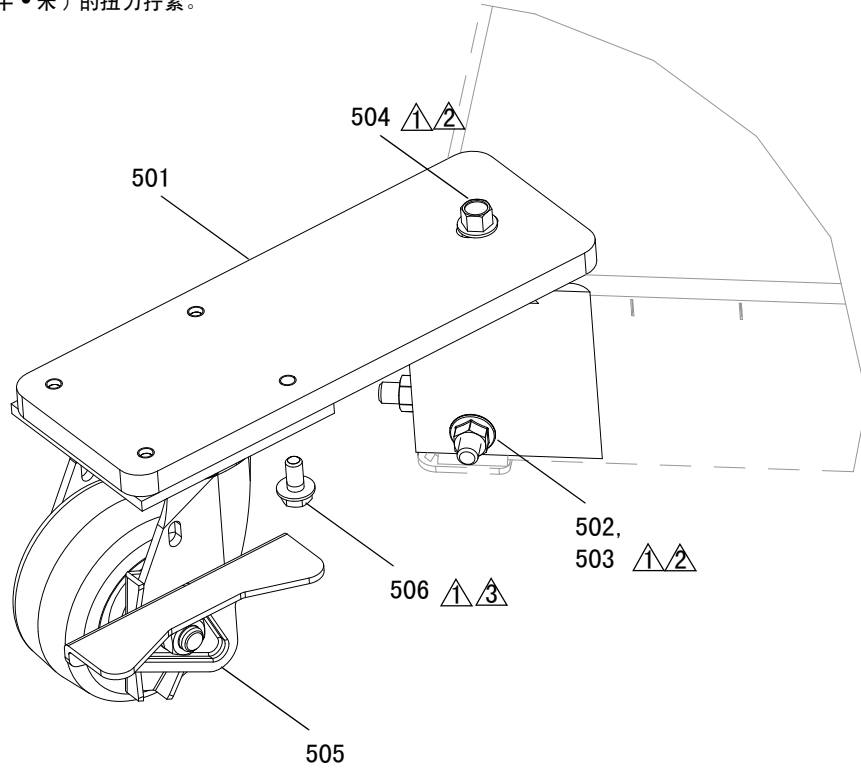


图 6：脚轮配件包

| 参考 | 零件 | 说明 | 数量 |
|-----|-----|-------------------------------------|----|
| 501 | --- | BRACKET, caster | 4 |
| 502 | --- | BOLT, carriage, M10-1.5x30mm | 8 |
| 503 | --- | NUT, hex, flange, serrated, M10-1.5 | 8 |
| 504 | --- | SCREW, machine, hex, M10-1.5x25mm | 4 |
| 505 | --- | CASTER, swivel, brake | 4 |
| 506 | --- | SCREW, cap, hex head, M8-1.25x16mm | 16 |

--- 不可单独销售。

Graco Standard Warranty

Graco warrants all equipment referenced in this document which is manufactured by Graco and bearing its name to be free from defects in material and workmanship on the date of sale to the original purchaser for use. With the exception of any special, extended, or limited warranty published by Graco, Graco will, for a period of twelve months from the date of sale, repair or replace any part of the equipment determined by Graco to be defective. This warranty applies only when the equipment is installed, operated and maintained in accordance with Graco's written recommendations.

This warranty does not cover, and Graco shall not be liable for general wear and tear, or any malfunction, damage or wear caused by faulty installation, misapplication, abrasion, corrosion, inadequate or improper maintenance, negligence, accident, tampering, or substitution of non-Graco component parts. Nor shall Graco be liable for malfunction, damage or wear caused by the incompatibility of Graco equipment with structures, accessories, equipment or materials not supplied by Graco, or the improper design, manufacture, installation, operation or maintenance of structures, accessories, equipment or materials not supplied by Graco.

This warranty is conditioned upon the prepaid return of the equipment claimed to be defective to an authorized Graco distributor for verification of the claimed defect. If the claimed defect is verified, Graco will repair or replace free of charge any defective parts. The equipment will be returned to the original purchaser transportation prepaid. If inspection of the equipment does not disclose any defect in material or workmanship, repairs will be made at a reasonable charge, which charges may include the costs of parts, labor, and transportation.

THIS WARRANTY IS EXCLUSIVE, AND IS IN LIEU OF ANY OTHER WARRANTIES, EXPRESS OR IMPLIED, INCLUDING BUT NOT LIMITED TO WARRANTY OF MERCHANTABILITY OR WARRANTY OF FITNESS FOR A PARTICULAR PURPOSE.

Graco's sole obligation and buyer's sole remedy for any breach of warranty shall be as set forth above. The buyer agrees that no other remedy (including, but not limited to, incidental or consequential damages for lost profits, lost sales, injury to person or property, or any other incidental or consequential loss) shall be available. Any action for breach of warranty must be brought within two (2) years of the date of sale.

GRACO MAKES NO WARRANTY, AND DISCLAIMS ALL IMPLIED WARRANTIES OF MERCHANTABILITY AND FITNESS FOR A PARTICULAR PURPOSE, IN CONNECTION WITH ACCESSORIES, EQUIPMENT, MATERIALS OR COMPONENTS SOLD BUT NOT MANUFACTURED BY GRACO. These items sold, but not manufactured by Graco (such as electric motors, switches, hose, etc.), are subject to the warranty, if any, of their manufacturer. Graco will provide purchaser with reasonable assistance in making any claim for breach of these warranties.

In no event will Graco be liable for indirect, incidental, special or consequential damages resulting from Graco supplying equipment hereunder, or the furnishing, performance, or use of any products or other goods sold hereto, whether due to a breach of contract, breach of warranty, the negligence of Graco, or otherwise.

Graco Information

For the latest information about Graco products, visit www.graco.com.

TO PLACE AN ORDER, contact your Graco distributor or call to identify the nearest distributor.

Phone: 612-623-6921 **or Toll Free:** 1-800-746-1334 **Fax:** 330-966-3006

All written and visual data contained in this document reflects the latest product information available at the time of publication. Graco reserves the right to make changes at any time without notice.

For patent information, see www.graco.com/patents.

技术手册原文翻译。This manual contains Chinese. MM 332453

Graco Headquarters: Minneapolis

International Offices: Belgium, China, Japan, Korea

GRACO INC. AND SUBSIDIARIES • P. O. BOX 1441 • MINNEAPOLIS MN 55440-1441 • USA

Copyright 2013, Graco Inc. All Graco manufacturing locations are registered to ISO 9001.

www.graco.com

Revised June 2013