

Bellows Chamber Kits

406854B

Merkur™ Bellows Pumps

ENG



Important Safety Instructions

Read all warnings and instructions in manuals 312793 and 312795. Save all instructions.

See reverse for parts illustration and assembly notes.

TIP: Some o-rings are close in size. Stack on bench to differentiate.

Kit 24E758, LB050x (50cc) pumps

Kit 24E759, LB100x (100 cc) pumps

Kit 24E760, LB150x (150cc) pumps

Ref	Description	Size in. (mm)			Qty
		24E878	24E759	24E760	
101	O-RING, packing nut top	1.9 (48)	1.9 (48)	1.9 (48)	1
102	O-RING, bellows chamber	2.5 (64)	2.5 (64)	2.5 (64)	1
103	WASHER				1
104	SCREW, M6 x 25				1
105	CHAMBER, bellows				1
106	O-RING, foot cap	1.8 (46)	2.4 (61)	2.7 (69)	1
107	FITTING, inlet	3/4 in. npt	3/4 in. npt	1 in. npt	1
108	O-RING, inlet fitting	1.0 (25)	1.0 (25)	1.0 (25)	1
109*	O-RING, packing nut bottom	1.6 (41)	2.0 (51)	2.3 (58)	1
110**	O-RING, piston	0.6 (15)	0.8 (20)	0.8 (20)	1

* May not be used. Remove packing nut only if necessary. If removed, replace o-rings before reassembly.

** May not be used. Piston and rod may separate during disassembly. If separated, always replace the o-ring before reassembly.

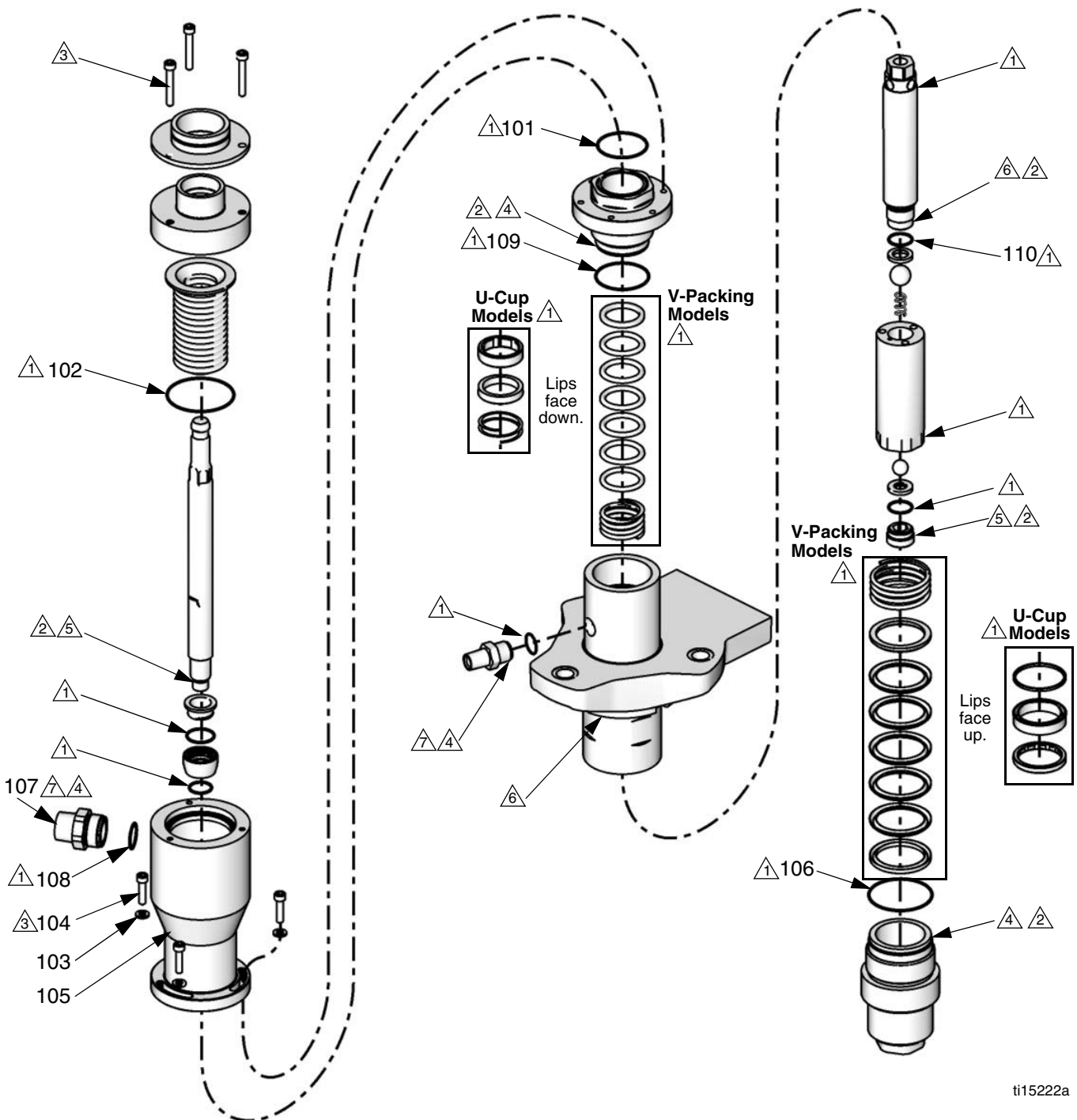
Graco Inc. P.O. Box 1441 Minneapolis, MN 55440-1441

Original instructions. MM 406854

Copyright 2010, Graco Inc. is registered to ISO 9001

Revised 7/2010

NOTE: Full disassembly shown. Disassemble only as far as needed for the parts being replaced.



ti15222a

- ① Apply grease.
- ② Apply thread lubricant.
- ③ Torque to 100-120 in-lb (11-14 N•m).
- ④ Torque to 54-66 ft-lb (73-89 N•m).

- ⑤ Torque to 74-86 ft-lb (100-117 N•m).
- ⑥ Torque to 91-109 ft-lb (123-148 N•m).
- ⑦ Apply high-strength thread locker.