



# Top Cap Kit 24A271

Merkur™ Bellows Pumps

406915A

ENG



## Important Safety Instructions

Read all warnings and instructions in manuals 312793 and 312795. Save all instructions.

## Kit 24A271

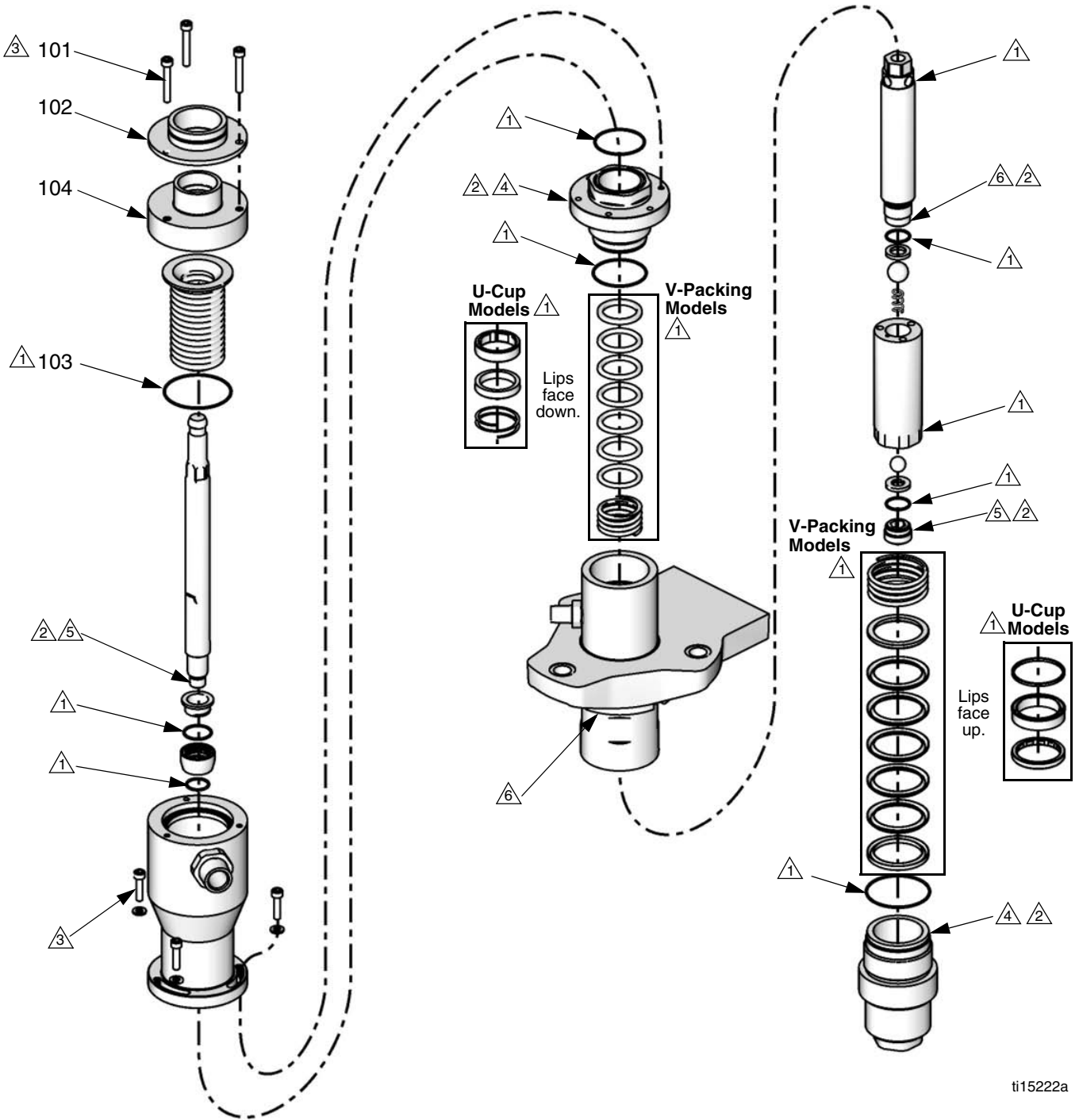
*See reverse for parts illustration and assembly notes.*

Ref.	Description	Qty.
101	SCREW, M6 x 40	3
102	SPACER, shield mount	1
103	O-RING, bellows chamber	1
104	TOP CAP	1

**Graco Inc. P.O. Box 1441 Minneapolis, MN 55440-1441**

Original instructions. This manual contains English. MM 406915  
Copyright 2010, Graco Inc. is registered to ISO 9001

**NOTE:** Full disassembly shown. Disassemble only as far as needed for the parts being replaced.



ti15222a

- ① Apply grease.
- ② Apply thread lubricant.
- ③ Torque to 100-120 in-lb (11-14 N•m).
- ④ Torque to 54-66 ft-lb (73-89 N•m).
- ⑤ Torque to 74-86 ft-lb (100-117 N•m).
- ⑥ Torque to 91-109 ft-lb (123-148 N•m).