



Hardware Kit 24E712

406916A

Merkur™ Bellows Pumps

ENG



Important Safety Instructions

Read all warnings and instructions in manuals 312793 and 312795. Save all instructions.

Kit 24E712

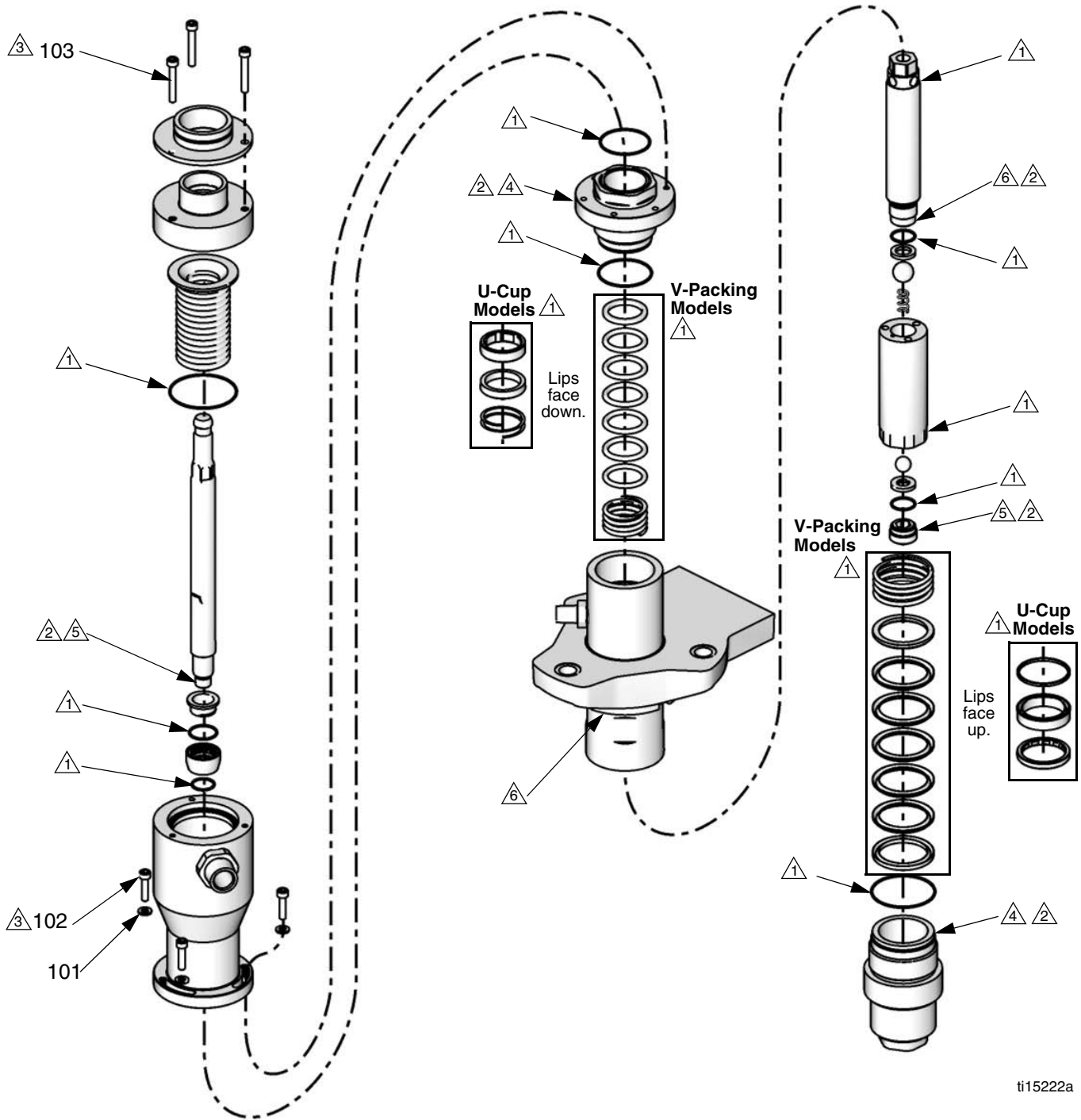
See reverse for parts illustration and assembly notes.

Ref.	Description	Qty.
101	WASHER	3
102	SCREW, M6 x 25	3
103	SCREW, M6 x 40	3

Graco Inc. P.O. Box 1441 Minneapolis, MN 55440-1441

Original instructions. This manual contains English. MM 406916
Copyright 2010, Graco Inc. is registered to ISO 9001

NOTE: Full disassembly shown. Disassemble only as far as needed for the parts being replaced.



ti15222a

- ① Apply grease.
- ② Apply thread lubricant.
- ③ Torque to 100-120 in-lb (11-14 N•m).
- ④ Torque to 54-66 ft-lb (73-89 N•m).
- ⑤ Torque to 74-86 ft-lb (100-117 N•m).
- ⑥ Torque to 91-109 ft-lb (123-148 N•m).